

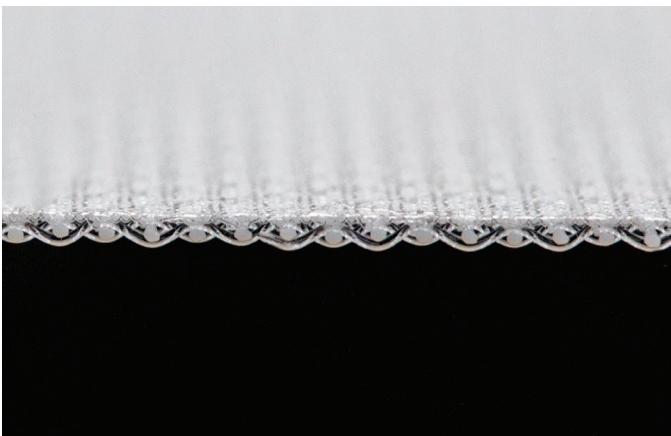
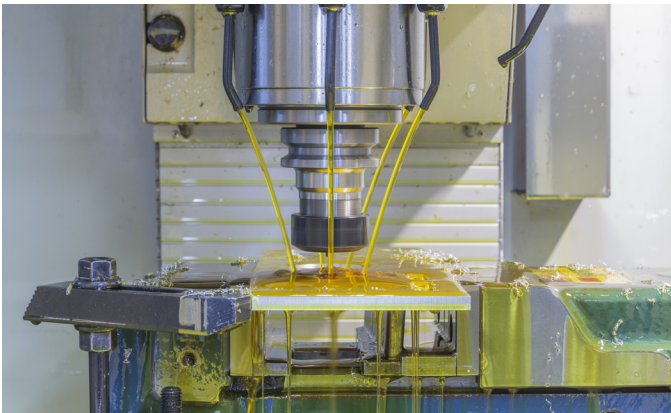
Product News

# SAATIEcofiltra Coolant

## Belts for coolant filtration

SAATIEcofiltra Coolant is the dedicated product line for the filtration of cooling fluids used in the steel working and mills sector. The Ecofiltra Coolant line is designed to cover all of the needs of the most common coolant applications as seen in the automotive industry, grinding, metalwork, etc.

Thanks to SAATI, media can be produced in customized configurations based on each customer's field use. SAATI supplies both standard calendered single-layer mesh and double-layer media. With double-layer media meshes, a single woven product achieves the filtration efficiency of fine filter meshes without sacrificing the mechanical resistance of the support gross meshes. This sophisticated weaving architecture gives SAATIEcofiltra dual-layer products a smooth surface that grants a perfect cake release.



### Your Advantages:

- Best liquid throughput results
- Customized fabrication
- Chemical & mechanical resistance
- Excellent cake release
- Cost-saving production
- Tested in the field

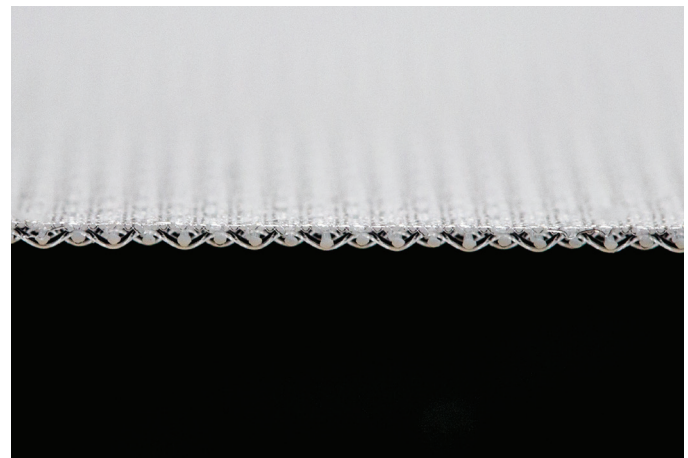
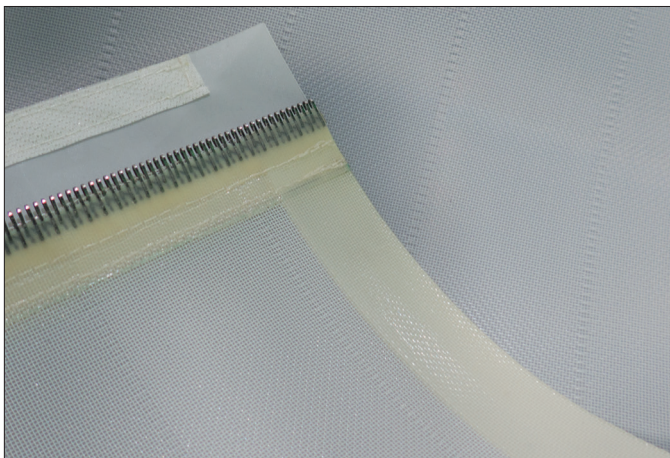
## Product News: Ecofiltra Coolant

The SAATIEcofiltra Coolant line is engineered to obtain the best fabric construction, pore size and shape for coolant applications. This is in order to achieve the best results for liquid throughput, filtration efficiency and product lifetime. Single layer architecture is engineered to maximize filtration cake release, dual layer medias can be supplied for maximum filtration efficiency and for maximum mechanical and chemical resistance.

### Technical Data

Item	Average Pore Size	Air Permeability	Air Permeability	Air Permeability
	$\mu\text{m}$	$\text{l} / \text{m}^2 / \text{sec}$	$\text{l} / \text{dm}^2 / \text{min}$	$\text{cfm}$
PET 45-810	45	1350	810	168
PET 85-1485	85	2475	1485	308
PET 105-2335	105	3900	2335	486
PET 118-2310	118	3858	2310	502
PET DLW 40 - 840	40	1400	840	175
PET DLW 65 - 1620	65	2700	1620	337
PET DLW 65 - 1620 HD	65	2700	1620	337
PET DLW 100 - 2280	100	3800	2280	474
PET DLH 41-1500	41	2505	1500	312
PET DLH 75-2200	75	3674	2200	458
PET DLH 80-2200	80	3674	2200	458
PP 115-500	115	835	500	109
PP 150-1000	150	1670	1000	217

### SAATI Ecofiltra Coolant belts



## Product News: Ecofiltra Coolant

SAATI can also offer ready-to-use belts with optimal modifications for coolant filtration applications, such as plastic edge reinforcement, and metallic, plastic & reinforced joint closures. SAATI's R&D team will evaluate any requested custom fabrication in order to provide the necessary flexibility and performance required by the customer.

The special formula of SAATI EPU edge can offer the best chemical and mechanical resistance.

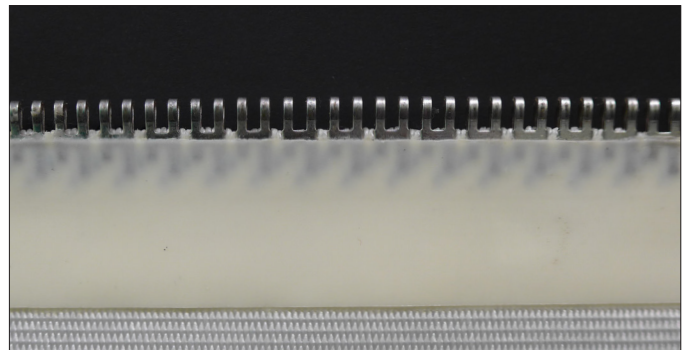
Lab tests have been performed incorporating a wide range of oil and lubricants, and additives containing anti-foam and anti-bacterial properties.

Included metal clipper joints can be also covered with plastic reinforcement, flaps, and any other customizable accessories upon request.

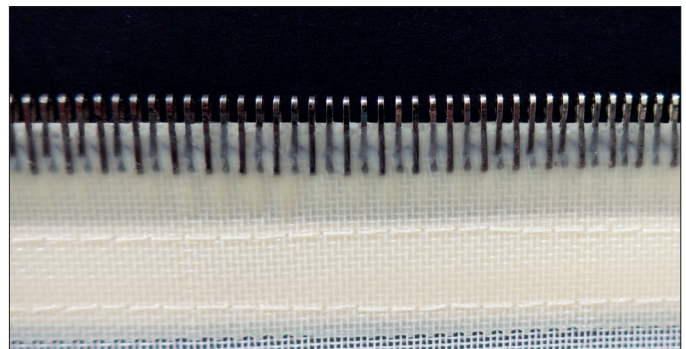
### Plastic edge reinforcement



### Metal clip joints



Heavy metallic joint with plastic reinforcement



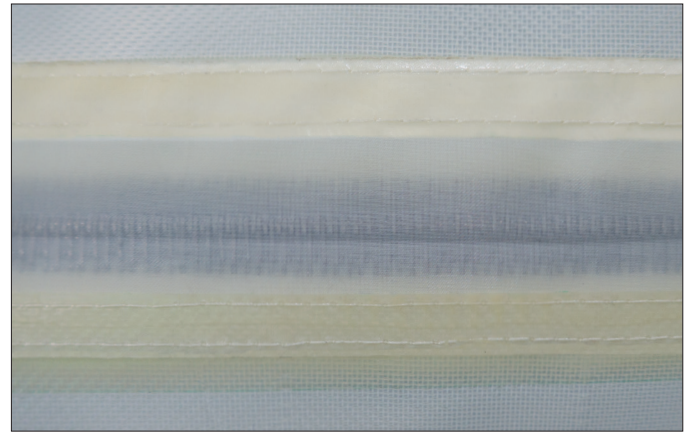
Light metallic joint with plastic reinforcement

All pictures shown are for illustration purpose only. Actual product may vary due to product enhancement.

## Product News: Ecofiltra Coolant

### Flap

SAATI Ecofiltra Colant belts are equipped with special and reinforced flaps which ensure protection of metal clip joints from any fluid.



Metallic joint with flap

### World Headquarters

**SAATI S.p.A**  
Via Milano 14  
22070 Appiano Gentile (CO)  
Italy  
T. +39 031 9711  
F. +39 031 933392  
E-mail: [info.IT@saati.com](mailto:info.IT@saati.com)  
Web site: [www.saati.com](http://www.saati.com)

### Branches:

**SAATI AMERICAS CORP.**  
201 Fairview Street Extension  
Fountain Inn, SC USA 29644  
T: +1 ( 864 ) 601-8300  
E-mail: [info.US@saati.com](mailto:info.US@saati.com)

**SAATI TECHNICAL FABRIC(TIANJIN) CO., LTD.**  
Cross of Saida 2nd Branch Road and  
Saida Century Avenue,  
Xiqing Economic Development Area,  
Tianjin, China, 300385  
T: +86 22 23960843  
E-mail: [info.CN@saati.cn](mailto:info.CN@saati.cn)

**SAATI DEUTSCHLAND GmbH**  
Ostring 22  
46348 Raesfeld  
Germany  
T: +49 2865 95800  
[info.de@saati.com](mailto:info.de@saati.com)

**SAATI KOREA LTD.**  
22, Dangjeong-ro, Gunpo-si, Gyeonggi-do,  
435-833, South Korea  
T: +82-31-429-9337

[www.saati.com](http://www.saati.com)

