

# SAATImil

Precision Woven  
Fabrics For  
Milling, Sifting &  
Food Processing  
Applications

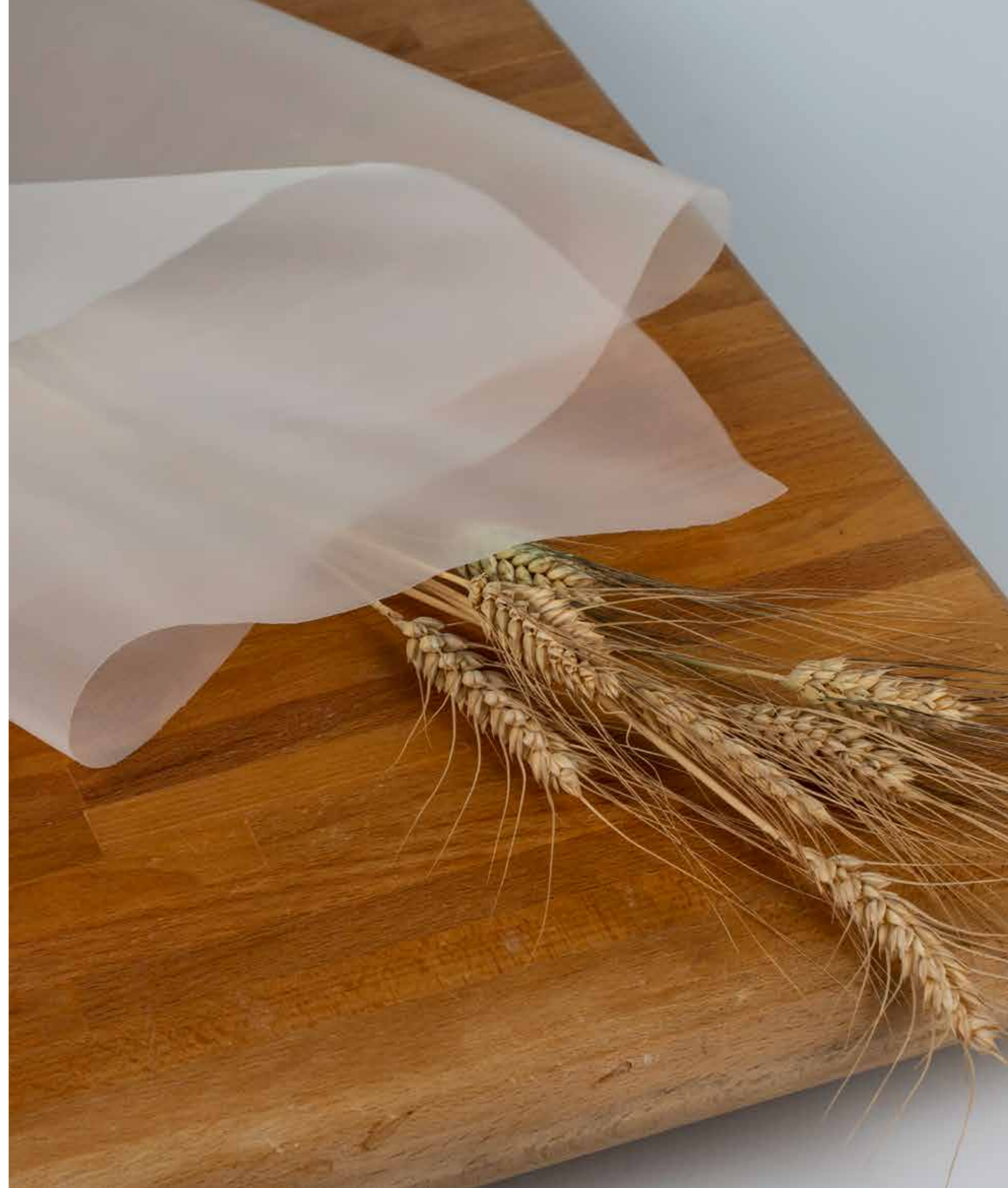
—SAATI

# Table of Contents



|   |      |
|---|------|
| <a href="#">Company Information</a> .....               | 02   |
| <a href="#">Customer Service</a> .....                  | 04   |
| <a href="#">SAATImil Fabrics</a> .....                  | 06   |
| <a href="#">SAATImil Weave Types</a> .....              | 08   |
| <a href="#">SAATImil PA GG</a> .....                    | 10   |
| <a href="#">SAATImil PA XXX</a> .....                   | 12   |
| <a href="#">SAATImil PA HT</a> .....                    | 14   |
| <a href="#">SAATImil PA XX</a> .....                    | 16   |
| <a href="#">SAATImil PA HS</a> .....                    | 18   |
| <a href="#">SAATImil PES GG</a> .....                   | 20   |
| <a href="#">SAATImil MAR</a> .....                      | 22   |
| <a href="#">SAATImil STS</a> .....                      | 24   |
| <a href="#">Fabricated Components</a> .....             | 26   |
| <a href="#">SAATImil Connector Sleeves</a> .....        | 28   |
| <a href="#">SAATI Tendimesh Stretching System</a> ..... | 30   |
| <a href="#">SAATImil Tension Meter</a> .....            | 34   |
| <a href="#">SAATImil Adhesives</a> .....                | 35   |
| <a href="#">Filip Screen Cleaners</a> .....             | 38   |
| <a href="#">Sieve Cleaners</a> .....                    | 40   |
| <a href="#">SAATImil Accessories</a> .....              | 44   |
| <a href="#">Interactive Product Index</a> .....         | 46   |
| <a href="#">Contact Information</a> .....               | BACK |

Engage  
with SAATI



Perfecting the  
Art of Precision  
Woven Mesh



## Company Information

### Over Eighty Years of Innovative Action

SAATI is a multinational group with corporate headquarters that have been situated in northern Italy since 1935.

Today we are a leader in the development, manufacturing and commercialization of advanced technical textiles & chemicals.

SAATI's passion and creativity are the foundation for an unsurpassed tradition of continuous innovation in the filtration markets. This endless pursuit is what drives SAATI's dedicated customer-centric R&D to functionalize products beyond simple filtration.

SAATI's wide range of synthetic textiles and fabricated parts in Nylon, Polyester, Polypropylene, PEEK and PPS are the ideal engineered solution for demanding process filtration applications.

Through specialized processing and rigorous inspection, SAATI ensures consistent lot quality across tolerances, uniformity, strength, stability, and cleanliness for applications from 7 to 3,000  $\mu\text{m}$ .

### Perfecting the Art of Precision Woven Fabrics with Innovation Driven R&D and Strict Quality Controls

SAATImil is SAATI's dedicated line to the flour milling industry, which includes an extensive selection of fabric types that are manufactured in accordance with ISO 9001:2000 and in compliance with FDA Code of Federal Regulations, as well as with Regulations CE 1935/2004 and EU 10/2011.

To guarantee the reliability of our products we constantly run tests and have all the most updated and strict certifications that validate the consistency, performance, quality and characteristics of each item.

With about 1,000 employees worldwide, facilities and a strong, established track record in innovation and manufacturing excellence, our mission is to improve the life of every person every day, through working with customers and partners to create a safer, healthier and cleaner world.



# Customer Focus

## Customer Driven Innovation

Thanks to our direct presence in many countries, it is easy for customers to reach us, wherever they are located, and our response is always prompt. Our staff has a high level of technical expertise and dedication, and are always aiming to find the best solution for the customer's requirements.

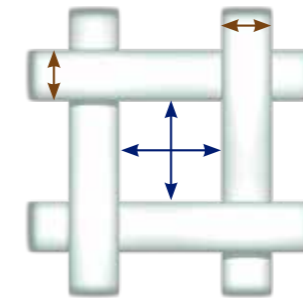
SAATI sales representatives and engineers understand customers' applications, and work closely with staff in the production and R&D departments to offer a customized solution in a form that best meets their needs.

The quality of SAATI's food products is backed by the dedication and expertise of SAATI's customer service. Thanks to offices, warehouses, storage and fabrication facilities throughout the world, SAATI provides strong local support, expert responses to customer inquiries, strong engineering capability, technical support and fast delivery around the world.





# SAATmil Fabrics



■ mesh opening

■ thread diameter

## SAATmil Fabrics Key Features

- Monofilament woven fabrics
- Available in synthetic (PA-PES-MAR) fibers
- High open area
- Consistent geometrical tolerances
- Excellent strength and dimensional stability
- High resistance to mechanical stress, abrasion, chemical agents and corrosion
- Lot-to-lot consistency
- Longer screen life
- Intended to come into contact with food

## Compliance of SAATmil Mesh Intended to Come into Contact with Food

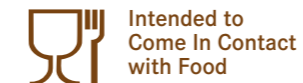
### Compliance of Composition:

Monofilament yarn polymer is in compliance with FDA Code of Federal Regulations (USA), Food and Drugs, Title 21, Part 177 Paragraph 177.1500 and 177.1420 (Indirect food additions: Polymers).

### Compliance of Performance: Compliance with Regulations 1935/2004/CE & EU 10/2011

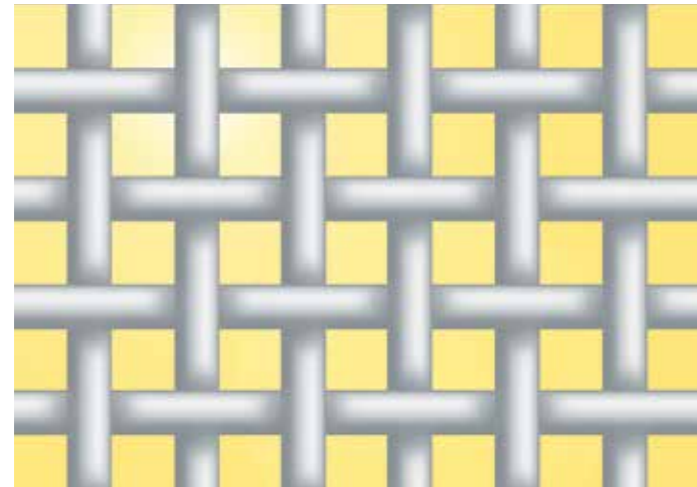
Specifically SAATI ensures full traceability throughout the production chain, from raw material to finished products vs. Customer. Mesh is tested in order to verify migration limits as per regulations concerning plastic materials intended to come in contact with food.

The processes of SAATI are conducted in compliance with specific GMP.

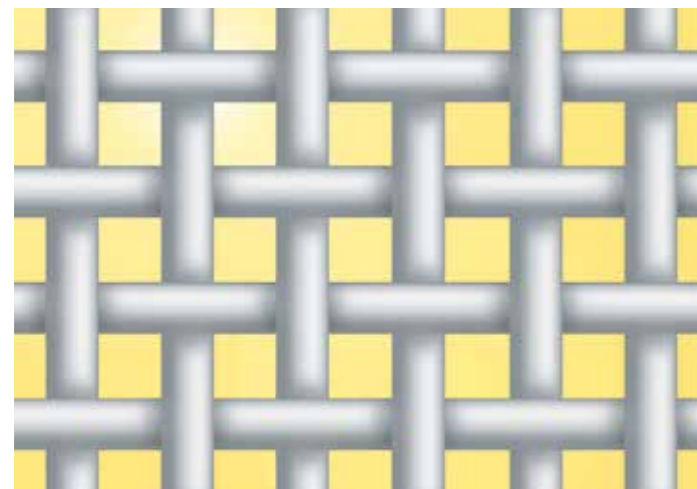




# SAATImil Weave Types



**SAATImil GG or Grit Gauze** grades are woven with coarser opening sizes with a smaller fiber to provide a higher screening capacity.



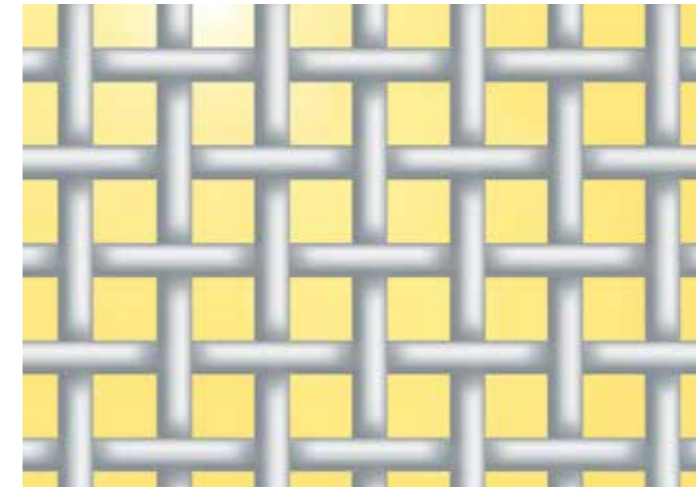
**SAATImil XXX** grades have a large fiber size and are used for hard grades of wheat and durum or other abrasive grains.

SAATImil fabrics are available in a variety of fiber sizes for a given opening size.

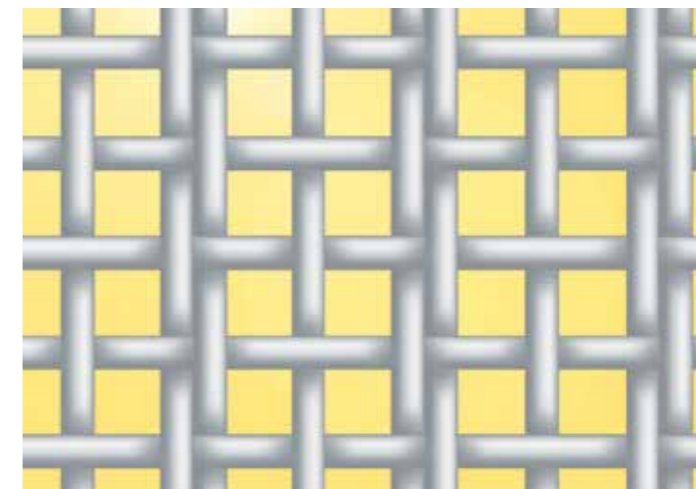
A large fiber improves screen life, but decreases screen flow capacity.

A smaller fiber will provide greater screening capacity but will wear out faster.

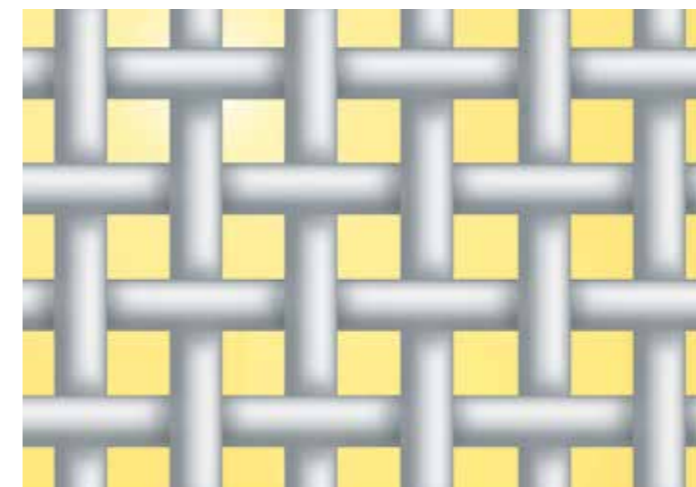
The flour milling industry has traditionally used a unique numbering system to denote variations in fiber sizes.



**SAATImil HT** are high-capacity screens in medium and finer opening sizes. They have a higher tensile strength and better abrasive resistance than the SAATImil XX grades. They are ideal for the newer type sifting frames which have glued-on screens requiring high tensile stretching.



**SAATImil XX** fabrics are woven with two smaller diameter fibers adjacent to one another. This construction provides a rougher surface to the screen, which is beneficial when sieving soft wheat, bakery flour, and other products that are difficult to sift.



**SAATImil HS** are high-strength fabrics produced with thicker and stronger yarns for longer durability. They are suitable for turbo-sifter covers and centrifugal sifters.



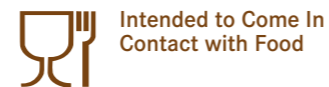
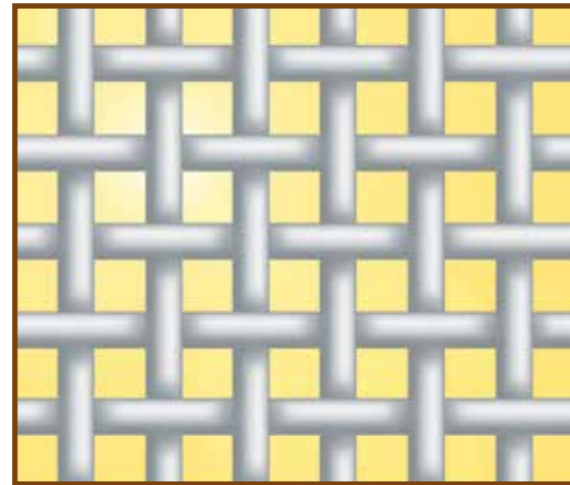
# SAATImil PA GG

Grit Gauze grades are woven with coarser opening sizes with a smaller fiber to provide a higher screening capacity

Engineered especially for separation of coarser particles, SAATImil™ GG or Grit Gauze grades are woven with coarser opening sizes made by smaller fiber to provide a higher screen capacity. Thanks to this mesh design, SAATImil™ GG screens are suitable for plansifter and purifier machines.

## Key Features

- FDA Approved polymer
- Melamine Free
- Resistant to humidity changes
- Maintains tension



Courtesy of Bühler AG

| Product  | Mesh Opening | Open Area | Mesh Count |         | Thread Diameter |
|----------|--------------|-----------|------------|---------|-----------------|
|          | µm           |           | cm         | in      | µm              |
| PA 10 GG | 1920         | 64        | 4.25       | 11      | 500             |
| PA 12 GG | 1800         | 61        | 4.5        | 11      | 500             |
| PA 14 GG | 1600         | 61        | 5          | 13      | 450             |
| PA 15 GG | 1400         | 62        | 5.5        | 14      | 400             |
| PA 16 GG | 1320         | 56        | 6          | 15      | 400             |
| PA 17 GG | 1250         | 56        | 6.5 x 5.75 | 17 x 15 | 400             |
| PA 18 GG | 1180         | 55        | 6.5        | 17      | 400             |
| PA 19 GG | 1120         | 59        | 7          | 18      | 325             |
| PA 20 GG | 1000         | 57        | 7.5        | 19      | 325             |
| PA 22 GG | 950          | 58        | 8          | 20      | 300             |
| PA 23 GG | 900          | 56        | 8.3        | 21      | 300             |
| PA 24 GG | 850          | 55        | 9          | 23      | 280             |
| PA 26 GG | 800          | 54        | 9.5        | 24      | 280             |
| PA 27 GG | 750          | 55        | 10.5       | 27      | 250             |
| PA 28 GG | 710          | 54        | 10.75      | 27      | 250             |
| PA 30 GG | 670          | 52        | 11         | 28      | 250             |
| PA 31 GG | 630          | 51        | 11.5       | 29      | 250             |
| PA 32 GG | 600          | 50        | 12         | 30      | 250             |
| PA 34 GG | 560          | 51        | 12.7       | 32      | 225             |
| PA 36 GG | 530          | 49        | 13.5       | 34      | 225             |
| PA 38 GG | 500          | 47        | 14         | 36      | 225             |
| PA 40 GG | 475          | 49        | 15         | 38      | 195             |
| PA 42 GG | 450          | 46        | 15.5       | 39      | 195             |
| PA 44 GG | 425          | 46        | 16         | 41      | 195             |
| PA 45 GG | 400          | 46        | 17         | 43      | 195             |
| PA 47 GG | 375          | 43        | 18         | 46      | 180             |
| PA 48 GG | 365          | 43        | 18         | 46      | 195             |
| PA 50 GG | 355          | 51        | 20         | 51      | 150             |
| PA 52 GG | 335          | 49        | 20.5       | 52      | 150             |
| PA 54 GG | 315          | 47        | 22         | 56      | 150             |
| PA 58 GG | 300          | 46        | 23         | 58      | 140             |
| PA 60 GG | 280          | 43        | 24         | 61      | 140             |
| PA 62 GG | 275          | 41        | 24         | 61      | 150             |
| PA 64 GG | 265          | 47        | 26         | 66      | 120             |
| PA 66 GG | 250          | 46        | 27         | 69      | 120             |
| PA 68 GG | 243          | 43        | 27.5       | 70      | 120             |
| PA 70 GG | 236          | 44        | 28         | 71      | 120             |
| PA 72 GG | 224          | 42        | 29         | 74      | 120             |
| PA 74 GG | 212          | 40        | 30         | 76      | 120             |

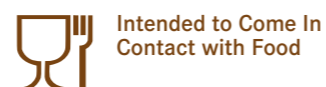
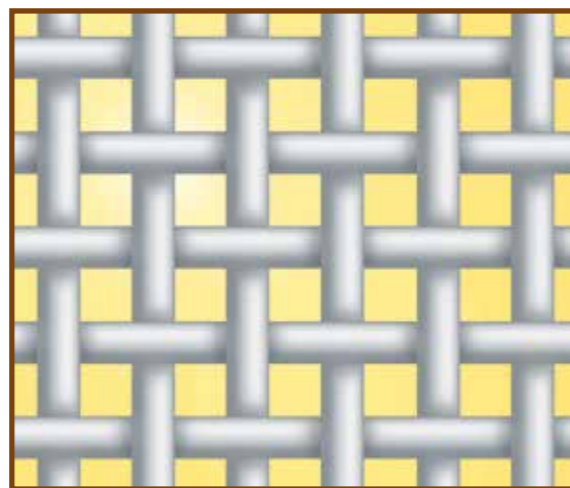
# SAATmil PA XXX

SAATmil XXX Grades have a large fiber size and are used for hard grades of wheat and durum or other abrasive grains.

Characterized by large fiber size, SAATmil™ XXX range of woven screens is used for fine particle separation such as hard grades of wheat and durum or other abrasive grains. SAATmil™ XXX screens are used for plansifter and purifier machines.

## Key Features

- FDA approved polymer
- Monofilament woven meshes
- High open area
- Mesh opening from 300 µm to 80 µm
- Maintains tension
- Consistent geometrical tolerances
- Longer screen life
- High resistance to mechanical stress, abrasion, chemical agents and corrosion



Intended to Come In Contact with Food

| Product     | Mesh Opening | Open Area | Mesh Count |     | Thread Diameter |
|-------------|--------------|-----------|------------|-----|-----------------|
|             | Micron       |           | cm         | in  | µm              |
| PA 3 XXX    | 300          | 46        | 23         | 58  | 140             |
| PA 4 XXX    | 280          | 43        | 24         | 61  | 140             |
| PA 5 XXX    | 250          | 46        | 27         | 69  | 120             |
| PA 6 XXX    | 212          | 40        | 30         | 76  | 120             |
| PA 7 XXX    | 200          | 39        | 31         | 79  | 120             |
| PA 8 XXX    | 180          | 43        | 36         | 91  | 100             |
| PA 8.5 XXX  | 160          | 37        | 38         | 97  | 100             |
| PA 9 XXX    | 150          | 39        | 41         | 104 | 90              |
| PA 9.5 XXX  | 140          | 36        | 43         | 109 | 90              |
| PA 10 XXX   | 132          | 39        | 46         | 117 | 80              |
| PA 10.5 XXX | 125          | 38        | 49         | 124 | 80              |
| PA 11 XXX   | 118          | 35        | 51         | 130 | 80              |
| PA 12 XXX   | 112          | 37        | 55         | 140 | 70              |
| PA 12.5 XXX | 105          | 32        | 55         | 140 | 80              |
| PA 13 XXX   | 100          | 32        | 57         | 145 | 70              |
| PA 14 XXX   | 90           | 30        | 62         | 157 | 70              |
| PA 14.5 XXX | 90           | 35        | 66         | 168 | 61              |
| PA 17 XXX   | 80           | 32        | 71         | 180 | 61              |





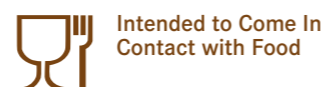
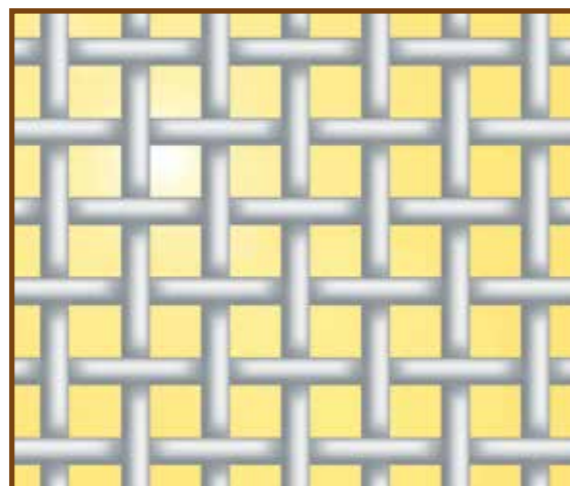
# SAATmil PA HT

High-capacity screens in medium and finer opening sizes. They have a higher tensile strength and better abrasive resistance than SAATmil XX grades.

SAATmil™ HT high-capacity woven screens are characterized by medium and small opening size for fine particles separation. They fit to recent type sifting frames, requiring high tensile stretching, for plansifter and purifier machines.

## Key Features

- FDA approved polymer
- Monofilament woven meshes
- High open area
- Plain weave
- Maintains tension
- Consistent geometrical tolerances
- Longer screen life
- High resistance to mechanical stress, abrasion, chemical agents and corrosion



| Product    | Mesh Opening | Open Area | Mesh Count |     | Thread Diameter |
|------------|--------------|-----------|------------|-----|-----------------|
|            | Micron       |           | cm         | in  | µm              |
| PA 3 HT    | 300          | 51        | 23.5       | 60  | 120             |
| PA 4 HT    | 280          | 51        | 25         | 64  | 120             |
| PA 5 HT    | 250          | 51        | 28.5       | 72  | 100             |
| PA 6 HT    | 212          | 47        | 32         | 81  | 100             |
| PA 7 HT    | 200          | 43        | 34         | 86  | 100             |
| PA 8 HT    | 180          | 43        | 36         | 91  | 100             |
| PA 8.5 HT  | 160          | 42        | 40         | 102 | 90              |
| PA 9 HT    | 150          | 43        | 43         | 109 | 80              |
| PA 9.5 HT  | 140          | 41        | 45         | 114 | 80              |
| PA 10 HT   | 132          | 42        | 49         | 124 | 70              |
| PA 10.5 HT | 125          | 41        | 51         | 130 | 70              |
| PA 11 HT   | 118          | 41        | 53         | 135 | 70              |
| PA 12 HT   | 112          | 42        | 57.5       | 146 | 61              |
| PA 13 HT   | 100          | 38        | 62         | 157 | 61              |



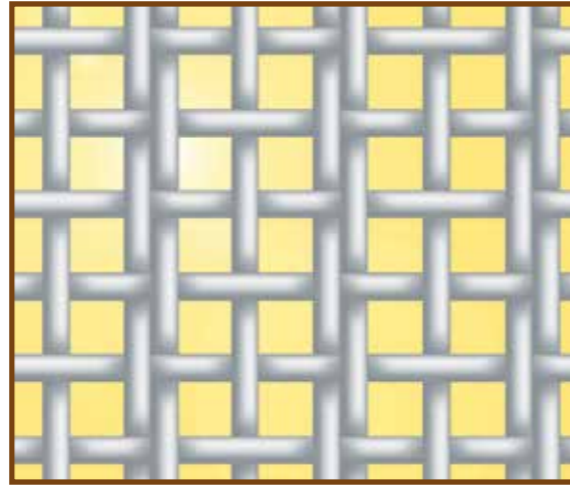
# SAATmil PA XX

Fabrics that are woven with two smaller diameter fibers adjacent to one another, making them rougher in order to sift difficult products.

SAATmil XX screens are woven with two smaller diameter fibers adjacent to one another. This type of screen construction increases its surface roughness to the screen, bringing benefits in sieving soft wheat, bakery flour and other products that are more difficult to sift.

## Key Features

- FDA approved polymer
- Monofilament woven meshes
- Double warp structure
- Mesh opening from 212 µm to 85 µm
- High open area
- Maintains tension
- Consistent geometrical tolerances
- Longer screen life
- High resistance to mechanical stress, abrasion, chemical agents and corrosion
- Recommended for plansifters



Intended to Come In Contact with Food

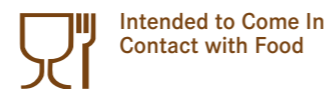
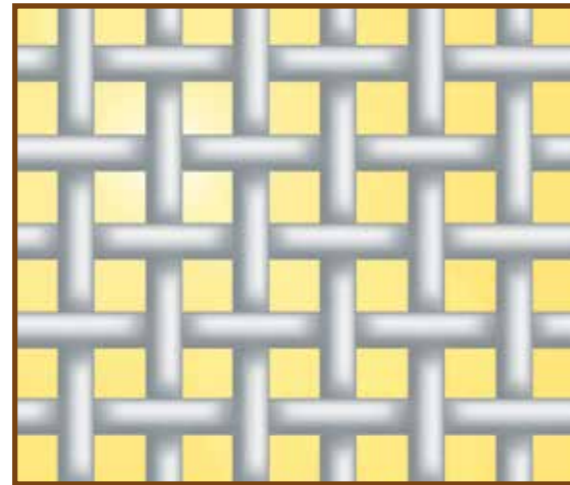
| Product    | Mesh Opening | Open Area | Mesh Count |         | Thread Diameter |
|------------|--------------|-----------|------------|---------|-----------------|
|            | µm           |           | cm         | in      | µm              |
| PA 6 XX    | 212          | 47        | 30/36      | 76/91   | (90+2x61)/80    |
| PA 7 XX    | 200          | 48        | 33/36      | 84/91   | (80+2x61)/80    |
| PA 8 XX    | 180          | 46        | 36/40      | 91/102  | (80+2x61)/70    |
| PA 8.5 XX  | 160          | 44        | 39/43      | 99/110  | (70+2x61)/70    |
| PA 9 XX    | 150          | 44        | 41/48      | 104/121 | (70+2x61)/61    |
| PA 9.5 XX  | 140          | 43        | 43/50      | 110/127 | (61+2x60)/60    |
| PA 10 XX   | 132          | 44        | 47/52      | 120/132 | (61+2x50)/61    |
| PA 10.5 XX | 125          | 40        | 49/54      | 124/137 | (61+2x50)/61    |
| PA 11 XX   | 118          | 42        | 50/59      | 128/151 | (61+2x50)/50    |
| PA 12 XX   | 112          | 40        | 52/62      | 132/157 | (61+2x50)/50    |
| PA 12.5 XX | 106          | 40        | 56/64      | 142/163 | (61+2x44)/50    |
| PA 13 XX   | 100          | 38        | 57/67      | 145/169 | (61+2x50)/50    |
| PA 14 XX   | 95           | 38        | 61/69      | 156/175 | (50+2x44)/50    |
| PA 14.5 XX | 90           | 35        | 94/71      | 234/175 | (50+2x44)/50    |
| PA 15 XX   | 85           | 34        | 65/74      | 165/188 | (50+2x43)/50    |

# SAATImil PA HS

SAATIMil HS are high-strength fabrics produced with thicker and stronger yarns for longer durability. They are suitable for turbo-sifter covers and centrifugal sifters.

## Key Features

- FDA Approved polymer
- Plain weave
- Monofilament extra-strong woven meshes
- Thicker thread diameters
- Consistent geometrical tolerances
- High resistance to mechanical stress, abrasion, chemical agents and corrosion
- Longer screen life
- Resistant to humidity changes
- Maintains tension



Intended to Come In Contact with Food

| Product | Mesh Opening | Open Area | Mesh Count |      | Thread Diameter |
|---------|--------------|-----------|------------|------|-----------------|
|         | Micron       |           | cm         | in   | µm              |
| PA 3 HS | 300          | 34        | 19.5       | 49.5 | 200             |
| PA 5 HS | 250          | 34        | 23         | 58   | 170             |
| PA 6 HS | 210          | 34        | 29.5       | 75   | 140             |
| PA 8 HS | 165          | 32        | 34         | 86   | 120             |
| PA 9 HS | 150          | 39        | 41         | 104  | 90              |



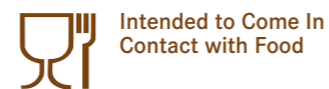
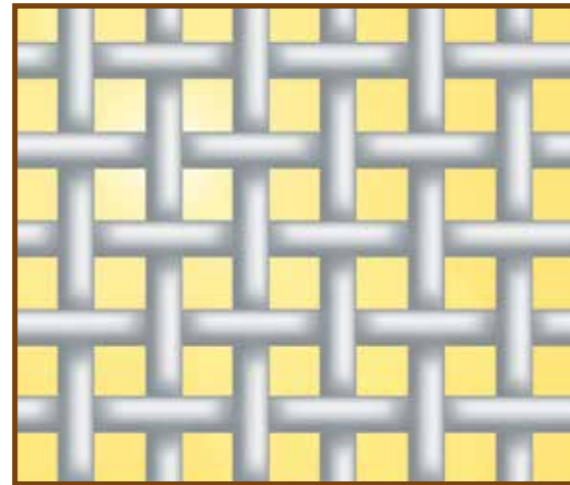
# SAATImil PES GG

Grit Gauze grades are woven with coarser opening sizes with a smaller fiber to provide a higher screening capacity

Engineered especially for separation of coarser particles, SAATImil™ GG or Grit Gauze grades are woven with coarser opening sizes made by smaller fiber to provide a higher screen capacity. The rough fabric surface makes the product remain longer on the sieves. This leads to better separation.

## Key Features

- FDA Approved polymer
- Melamine Free
- Resistant to humidity and temperature changes
- Maintains tension



Intended to Come In Contact with Food



Courtesy of Bühler AG

| Product   | Mesh Opening | Open Area | Mesh Count |      | Thread Diameter |
|-----------|--------------|-----------|------------|------|-----------------|
|           | µm           |           | cm         | in   | µm              |
| PES 10 GG | 2000         | 51        | 3.6        | 9.2  | 800             |
| PES 12 GG | 1800         | 61        | 4.25       | 11   | 500             |
| PES 14 GG | 1600         | 64        | 5          | 13   | 460             |
| PES 15 GG | 1400         | 57        | 5.4        | 13.7 | 450             |
| PES 16 GG | 1320         | 59        | 5.8        | 14.7 | 400             |
| PES 18 GG | 1180         | 58        | 6.5        | 17   | 385             |
| PES 19 GG | 1120         | 56        | 6.5        | 17   | 400             |
| PES 20 GG | 1000         | 57        | 7.5        | 19   | 320             |
| PES 22 GG | 950          | 58        | 8          | 20   | 300             |
| PES 23 GG | 900          | 56        | 8.3        | 21   | 300             |
| PES 24 GG | 850          | 55        | 9          | 23   | 280             |
| PES 26 GG | 800          | 55        | 9.5        | 24   | 280             |
| PES 27 GG | 750          | 53        | 10         | 25   | 260             |
| PES 28 GG | 710          | 52        | 10.5       | 27   | 260             |
| PES 30 GG | 670          | 52        | 10.8       | 27   | 260             |
| PES 31 GG | 630          | 53        | 11.5       | 29.2 | 240             |
| PES 32 GG | 600          | 51        | 12         | 30   | 240             |
| PES 34 GG | 560          | 47        | 12         | 30   | 260             |
| PES 36 GG | 530          | 50        | 13.4       | 34   | 220             |
| PES 38 GG | 500          | 48        | 14         | 36   | 220             |
| PES 40 GG | 475          | 50        | 15         | 38   | 200             |
| PES 42 GG | 450          | 48        | 15.4       | 39.1 | 200             |
| PES 44 GG | 425          | 46        | 16         | 41   | 200             |
| PES 45 GG | 400          | 52        | 18         | 46   | 160             |
| PES 47 GG | 375          | 50        | 19         | 48   | 160             |
| PES 50 GG | 355          | 47        | 19.4       | 49.3 | 160             |
| PES 52 GG | 335          | 46        | 20.2       | 51   | 160             |
| PES 54 GG | 315          | 46        | 21         | 53   | 160             |
| PES 56 GG | 300          | 44        | 23         | 58   | 145             |
| PES 60 GG | 280          | 43        | 24         | 61   | 145             |
| PES 64 GG | 265          | 53        | 27         | 69   | 100             |
| PES 66 GG | 250          | 44        | 27         | 69   | 120             |
| PES 70 GG | 236          | 41        | 29         | 74   | 120             |
| PES 72 GG | 224          | 35        | 27         | 69   | 145             |

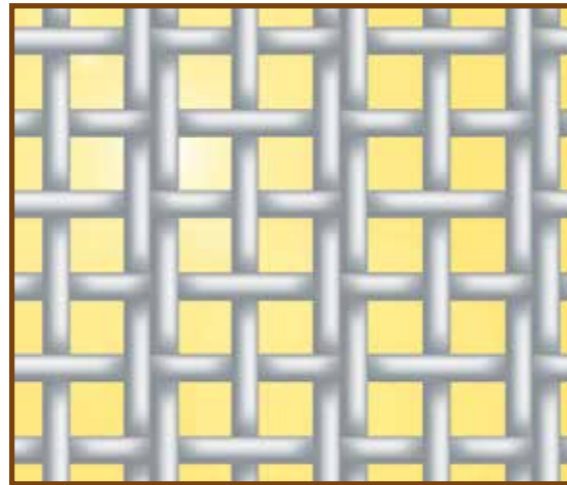
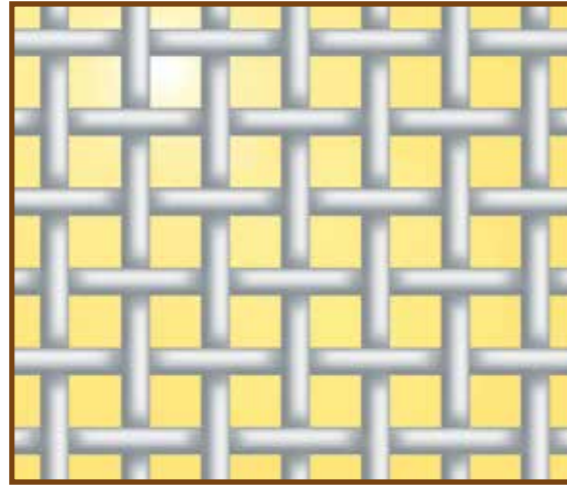
# SAATmil MAR


## Specially Treated Mesh that Resists Moisture Absorption

SAATmil MAR™ is obtained from an advanced melamine free and FDA approved polymer then is woven and finished complex techniques. The MAR HT and MAR XX lines of fabric are the ideal choice for all milling applications where standard nylon cloths do not stand high humidity values and subsequently adsorb moisture, causing a critical loss of tension and decreased screening efficiency.

### Key Features

- FDA Approved polymer
- Melamine Free
- Resistant to humidity changes
- Maintains tension



 Intended to Come In Contact with Food

| Product | Mesh Opening |             | Mesh Opening |         | Thread Diameter |
|---------|--------------|-------------|--------------|---------|-----------------|
|         | Micron       | Open Area % | cm           | in      |                 |
| 3 HT    | 300          | 50          | 24           | 61      | 120             |
| 4 HT    | 280          | 44          | 23           | 58      | 145             |
| 5 HT    | 250          | 44          | 27           | 69      | 120             |
| 7 HT    | 200          | 45          | 36           | 91      | 90              |
| 8 HT    | 180          | 41          | 34           | 86      | 100             |
| 8.5 HT  | 160          | 42          | 38           | 97      | 90              |
| 9 HT    | 150          | 43          | 43           | 109     | 80              |
| 9.5 HT  | 140          | 40          | 45           | 114     | 80              |
| 10 HT   | 132          | 40          | 49           | 124     | 70              |
| 10.5 HT | 125          | 41          | 55           | 140     | 64              |
| 11 HT   | 118          | 38          | 51           | 130     | 70              |
| 12 HT   | 112          | 29          | 46           | 117     | 90              |
| 13 HT   | 100          | 33          | 55           | 140     | 70              |
| 9 XX    | 150          | 40          | 40/48        | 101/122 | (70+2x64)/64    |
| 10 XX   | 132          | 43          | 47/52        | 119/132 | (60+2x48)/48    |
| 11 XX   | 118          | 41          | 50/61        | 127/155 | (64+2x48)/48    |
| 12 XX   | 112          | 40          | 51/61        | 129/155 | (64+2x48)/48    |

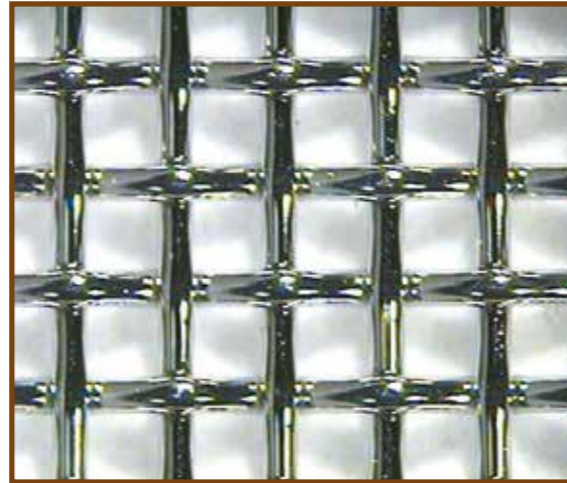
# SAATImil STS

## Woven Stainless Steel for Abrasive Sifting

SAATImil STS is a range of stainless steel woven meshes designed to sieve accurately abrasive materials including food, chemical products, stones and a variety of powders.

### Key Features

- Uniform pore size
- Consistent wire diameter
- Resistant to humidity
- Static loading
- Accurate sizing
- Consistent geometric tolerances
- Longer sieving operating life



| Product        | Mesh Opening |        | Open Area % | Wt. kg/m <sup>2</sup> | Wire Diameter |        |
|----------------|--------------|--------|-------------|-----------------------|---------------|--------|
|                | µm           | inch   |             |                       | µm            | inch   |
| SAATImil STS   |              |        |             |                       |               |        |
| STS 10 2240/74 | 2240         | 0.0882 | 74          | 0.65                  | 360           | 0.0142 |
| STS 11 2000/74 | 2000         | 0.0787 | 74          | 0.56                  | 320           | 0.0126 |
| STS 12 1800/72 | 1800         | 0.0709 | 72          | 0.61                  | 320           | 0.0126 |
| STS 14 1600/77 | 1600         | 0.0630 | 77          | 0.34                  | 220           | 0.0087 |
| STS 16 1400/75 | 1400         | 0.0551 | 75          | 0.38                  | 220           | 0.0087 |
| STS 17 1250/72 | 1250         | 0.0492 | 72          | 0.42                  | 220           | 0.0087 |
| STS 18 1180/71 | 1180         | 0.0466 | 71          | 0.44                  | 220           | 0.0087 |
| STS 19 1120/70 | 1120         | 0.0464 | 70          | 0.46                  | 220           | 0.0087 |
| STS 20 1060/69 | 1060         | 0.0417 | 69          | 0.48                  | 220           | 0.0087 |
| STS 21 1000/67 | 1000         | 0.0394 | 67          | 0.51                  | 220           | 0.0087 |
| STS 22 950/68  | 950          | 0.0374 | 68          | 0.44                  | 200           | 0.0079 |
| STS 23 900/67  | 900          | 0.0354 | 67          | 0.46                  | 200           | 0.0079 |
| STS 24 850/66  | 850          | 0.0334 | 66          | 0.48                  | 200           | 0.0079 |
| STS 26 800/64  | 800          | 0.0315 | 64          | 0.52                  | 200           | 0.0079 |
| STS 27 750/65  | 750          | 0.0295 | 65          | 0.44                  | 180           | 0.0071 |
| STS 28 710/64  | 710          | 0.0279 | 64          | 0.46                  | 180           | 0.0071 |
| STS 30 670/65  | 670          | 0.0264 | 65          | 0.40                  | 160           | 0.0063 |
| STS 32 630/64  | 630          | 0.0248 | 64          | 0.41                  | 160           | 0.0063 |
| STS 34 600/62  | 600          | 0.0236 | 62          | 0.42                  | 160           | 0.0063 |
| STS 35 560/60  | 560          | 0.0220 | 60          | 0.45                  | 160           | 0.0063 |
| STS 36 530/59  | 530          | 0.0209 | 59          | 0.47                  | 160           | 0.0063 |
| STS 38 500/57  | 500          | 0.0197 | 57          | 0.49                  | 160           | 0.0063 |
| STS 40 475/56  | 475          | 0.0187 | 56          | 0.52                  | 160           | 0.0063 |
| STS 42 450/58  | 450          | 0.0177 | 58          | 0.42                  | 140           | 0.0055 |
| STS 43 465/62  | 465          | 0.0183 | 62          | 0.34                  | 125           | 0.0049 |
| STS 44 425/57  | 425          | 0.0167 | 57          | 0.44                  | 140           | 0.0055 |
| STS 46 450/64  | 450          | 0.0177 | 64          | 0.29                  | 112           | 0.0044 |
| STS 46 400/54  | 400          | 0.0157 | 54          | 0.46                  | 140           | 0.0055 |
| STS 48 425/63  | 425          | 0.0167 | 63          | 0.30                  | 112           | 0.0044 |
| STS 50 400/61  | 400          | 0.0157 | 61          | 0.32                  | 112           | 0.0044 |
| STS 50 375/53  | 375          | 0.0148 | 53          | 0.48                  | 140           | 0.0055 |

| Product        | Mesh Opening |        | Open Area % | Wt. kg /m <sup>2</sup> | Wire Diameter |        |
|----------------|--------------|--------|-------------|------------------------|---------------|--------|
|                | µm           | inch   |             |                        | µm            | inch   |
| SAATImil STS   |              |        |             |                        |               |        |
| STS 52 375/59  | 375          | 0.0148 | 59          | 0.33                   | 112           | 0.0044 |
| STS 52 355/51  | 355          | 0.0140 | 51          | 0.51                   | 140           | 0.0055 |
| STS 54 375/62  | 375          | 0.0148 | 62          | 0.27                   | 100           | 0.0039 |
| STS 54 335/50  | 335          | 0.0132 | 50          | 0.53                   | 140           | 0.0055 |
| STS 56 355/61  | 355          | 0.0140 | 61          | 0.28                   | 100           | 0.0039 |
| STS 58 335/59  | 355          | 0.0132 | 59          | 0.29                   | 100           | 0.0039 |
| STS 58 315/54  | 315          | 0.0124 | 54          | 0.37                   | 112           | 0.0044 |
| STS 60 325/58  | 325          | 0.0128 | 58          | 0.30                   | 100           | 0.0039 |
| STS 62 315/58  | 315          | 0.0124 | 58          | 0.31                   | 100           | 0.0039 |
| STS 62 300/53  | 300          | 0.0118 | 53          | 0.39                   | 112           | 0.0044 |
| STS 64 300/56  | 300          | 0.0118 | 56          | 0.32                   | 100           | 0.0039 |
| STS 66 280/51  | 280          | 0.0110 | 51          | 0.41                   | 112           | 0.0044 |
| STS 68 280/54  | 280          | 0.0110 | 54          | 0.33                   | 100           | 0.0039 |
| STS 70 265/53  | 265          | 0.0104 | 53          | 0.35                   | 100           | 0.0039 |
| STS 72 250/51  | 250          | 0.0098 | 51          | 0.36                   | 100           | 0.0039 |
| STS 76 236/49  | 236          | 0.0093 | 49          | 0.38                   | 100           | 0.0039 |
| STS 78 224/48  | 224          | 0.0088 | 48          | 0.39                   | 100           | 0.0039 |
| STS 80 218/47  | 218          | 0.0086 | 47          | 0.40                   | 100           | 0.0039 |
| STS 84 212/49  | 212          | 0.0083 | 49          | 0.34                   | 90            | 0.0035 |
| STS 88 200/48  | 200          | 0.0079 | 48          | 0.36                   | 90            | 0.0035 |
| STS 88 190/43  | 190          | 0.0075 | 43          | 0.45                   | 100           | 0.0039 |
| STS 90 190/46  | 190          | 0.0075 | 46          | 0.37                   | 90            | 0.0035 |
| STS 90 180/41  | 180          | 0.0071 | 41          | 0.46                   | 100           | 0.0039 |
| STS 94 180/44  | 180          | 0.0071 | 44          | 0.38                   | 90            | 0.0035 |
| STS 94 170/40  | 170          | 0.0067 | 40          | 0.48                   | 100           | 0.0039 |
| STS 105 160/47 | 160          | 0.0063 | 47          | 0.25                   | 75            | 0.0029 |
| STS 120 140/47 | 140          | 0.0055 | 47          | 0.26                   | 65            | 0.0026 |
| STS 135 125/44 | 125          | 0.0049 | 44          | 0.28                   | 65            | 0.0026 |
| STS 145 118/46 | 118          | 0.0046 | 46          | 0.23                   | 56            | 0.0022 |
| STS 165 100/44 | 100          | 0.0039 | 44          | 0.21                   | 50            | 0.0020 |
| STS 180 95/46  | 95           | 0.0037 | 46          | 0.18                   | 45            | 0.0018 |



# Fabricated Components



### Dust Filter Bags

Custom dust filter bags produced for most standard OEM baghouses. DFB's are available with materials PES, PP, and Nomex with surface finishing plain, singed, eggshell or PTFE. Seams can be sewn or heat welded. DFB's can be made top with raw edge, beaded cuff, or snap band.



### Purifier Covers

SAATImil also manufactures purifier covers for all types of machines. The purifier covers can be manufactured either with PA GG or PES GG, with or without plastic rods and with rounded corners. SAATI Purifier Covers are intended to come in contact with food, and results of overall and specific migration tests are always available.



Intended to Come In Contact with Food



### Centrifugal Sifting Screens

SAATImil manufactures sifting screens for all centrifugal sifter types, in a variety of designs. With capabilities to sew multifilament edges and seams, or welding urethane to the SAATImil mesh, SAATI has durable products that provide a consistent separation. Our urethane seams ensure a solid product that does not show wear and tear. In addition, with urethane edging, it provides sanitary screens that can be washed and cleaned with little contamination.

Specific SAATI Centrifugal Sifting Screens are intended to come in contact with food, and results of overall and specific migration tests are always available.



Intended to Come In Contact with Food



# Connector Sleeves

SAATmil is SAATI's dedicated line for the flour milling industry, which includes an extensive selection of fabric types that are manufactured in accordance with ISO 9001:2000 and in compliance with current food regulations.

SAATmil Connector Sleeves ensure a permanent and secure connection between plansifter, purifier, milling equipment, and inlet and outlet devices. The fabrication, developed for this specific application, is able to grant the correct behavior for each miller's needs. The SAATmil Connector Sleeves are made with food grade polyester multifilament material that is compliant with FDA and EU 10/2011 regulation. This is proven by a migration test that has to be available and that SAATI can supply on request. Yarn used for assembly is food grade as well, in order to avoid any cross contamination for accidental flour contact during charge and discharge operation. Thanks to the material's elasticity SAATmil Connector Sleeves are resistant to the plansifter's continuous movement, granting excellent lifetime and performance that have been tested for years by the major milling equipment manufacturers.

SAATmil Connector Sleeves can be fabricated to customer specification and according to the equipment standard sizes. SAATI can also fit all customer requirements for other configurations made with ends enclosing shock cord, elastic, draw string, or hems. Sleeves can also be produced with or without support rings.



## Features

- Fully FDA Polymer Approved - Conformity Declaration upon request
- Fully Compliant with EU 10/2011 - Conformity Declaration upon request
- Excellent lifetime
- High air permeability
- Tailor-made fabrication

| Product              | Diameter |      | Length |      | Ring n° |
|----------------------|----------|------|--------|------|---------|
|                      | mm       | inch | mm     | inch |         |
| MPET 7338 Food Grade | 300      | 11.8 | 310    | 12.2 | 2       |
| MPET 7338 Food Grade | 240      | 9.5  | 280    | 11   | 2       |
| MPET 7338 Food Grade | 210      | 8.3  | 310    | 12.2 | 2       |
| MPET 7338 Food Grade | 150      | 6    | 290    | 11.4 | 2       |
| MPET 7338 Food Grade | 120      | 4.7  | 290    | 11.4 | 2       |
| MPET 7338 Food Grade | 120      | 4.7  | 150    | 6    | 1       |
| MPET 7338 Food Grade | 120      | 4.7  | 260    | 10.2 | 2       |
| MPET 7338 Food Grade | 120      | 4.7  | 110    | 4.3  | 0       |

Other sizes, different from standard ones, are available upon request.



Photo courtesy of Lantmännen and FilTrade



# SAATI Tendimesh

## Rapidly Stretch Screens Off-Contact with Durable, Intuitive Stretch Clamps

SAATI Tendimesh is the newest screen stretching system, specially developed for the milling industry. Thanks to the combination of our competency and experience with technical meshes in milling applications, we offer a new product that confers significant advantages in milling screen production.

SAATI Tendimesh is a modular system with the option to use two different jaw sizes, and with a choice between single and double pressure circuits through the use of two different control panels.

This flexibility guarantees compatibility with different frame types (metal or wood) and sizes (i.e. 710x655 cm, 570x620cm, 570x500 cm). The assembly option

with two circuit panels facilitates independent very fine tuning on the X & Y axes, in order to achieve equal tension in the warp and weft directions.

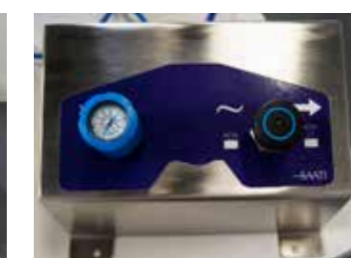
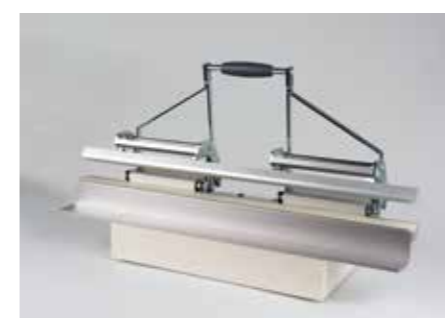
SAATI Tendimesh is a compact device with a small footprint, built with high quality materials and a reliable mechanism.

SAATI Tendimesh clamps lock mechanically instead of pneumatically, so in the event of a loss of pressure, the mesh will remain secured in the jaws.

The system works with a dedicated table and line of accessories that enable you to tension every type of fabric on every type of frame.

SAATI Tendimesh Specifications

|  |   |
|--|---|
| Jaw Width                                | 24.8 or 28.7"   63 or 73 cm   |
| Maximum Tension                          | 15.9 lb/sq. in. at 100 psi   28 N/cm at 7 bar                             |
| Clamp Weight                             | 55.1 lbs   25 kg  |
| Piston Stroke                            | 1.96"   50 mm   |
| Clamp Total Length                       | 13"   331 mm  |
| Clamp Length to Contact Point with Frame | 10.91"   277 mm   |
| Colors                                   | RAL 9001 - standard   |
| Control Panel                            | Pneumatic switches for handling tension / pressure gauge / emergency lock |
| Compressed Air                           | 95-100 PSI (humidity free air line required)                              |
| Recommended Table Size                   | 59 x 59"   1500 x 1500 mm   |



# Tendimesh Accessories

## Tensioning Support



≤ 112 micron

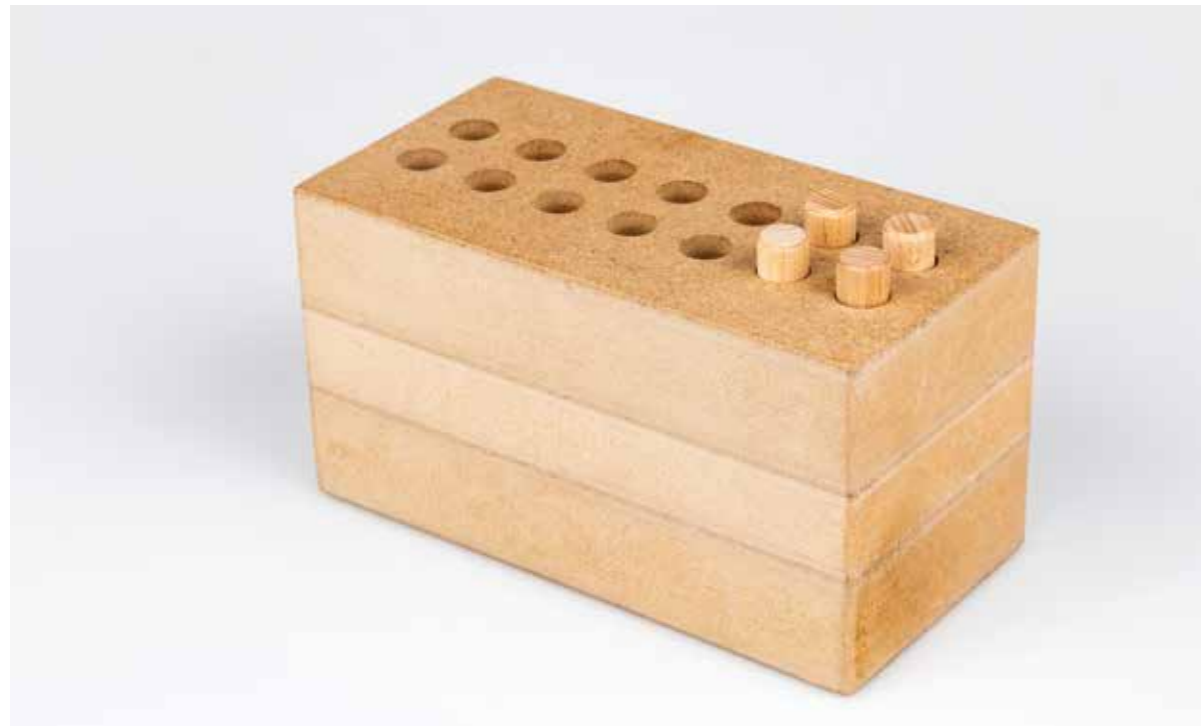


≤ 140 micron



≤ 200 micron

## Frame Spacer



## MDF Support



### Dimensions

- 620 x 30 h40 mm
- 620 x 30 h47 mm
- 720 x 30 x h40 mm
- 720 x 30 x h47 mm

Suitable for both wood and metal frame.



### Dimensions

- 620 x 30 x 47-53 mm
- 720 x 30 h47-53 mm

# SAATImil Tension Meter

Quickly and easily determine the tension for screens both in the process of stretching and before, during and after use

The Newman ST-Meter is a uniquely constructed, heavy-duty mechanical tension meter that assures durability and long-term accuracy in monitoring screen tension. It is the only meter in the world with all stainless steel hardened gears, shock-proof industrial grade internal gear movement and all jeweled sapphire bearings. A screen tension meter of exceptional quality will produce accurate readings consistently for a very long time. All other mechanical meters have softer brass gears and bushings that greatly reduce their life and accuracy. The crystal is shatter proof and curved to reduce glare. The heavy-duty protective aluminum housing is the most durable meter made anywhere. The modular construction assures easy and inexpensive repairs, if any are necessary.



## Key Features

- Shock-proof unitized internal gear movement
- Eight sapphire jeweled bearings
- Six compound hardened stainless steel gears
- Also available in kilograms/meter
- Direct reading in N/cm, ± 1% accuracy
- Shatterproof crystal
- Heavy-duty protective aluminum housing
- A calibration plate is provided with each meter, and is packaged in a protective carrying case

| Technical Data                |                         |                            |
|-------------------------------|-------------------------|----------------------------|
| Test Conditions               | 50/60% Humidity 18-20°C |                            |
| Measuring Range               | 5-60 N/cm               |                            |
| Sifter Mesh Opening(μm)       | Original Tension N/cm   | Tension after 3 hours N/cm |
| SAATImil PA >375              | 16-14                   | 13-8                       |
| SAATImil PA 355-280           | 14-12                   | 11-7                       |
| SAATImil PA 270-150           | 12-10                   | 9-6                        |
| SAATImil PA 140-80            | 10-8                    | 7-5                        |
| Weight of the Newman ST-Meter | 2.2 lbs                 |                            |

# SAATImil Adhesives



## Ultrafix CA Series Adhesives

SAATI Ultrafix CA adhesives are designed for bonding wire cloth and synthetic screens to wood, metal or plastic frames. Ultrafix CA adhesive is available in 50 and 450 gram containers.

## Poly Squeegee (Scrapers)

Poly Squeegee (scrapers) are available in 5 x 7.5 cm



## Ultrafix CA Activator

Ultrafix CA Activator cures cyanoacrylate adhesive instantly and is available in two types of dispensers: aerosol and pump. It is available in 200 ml containers.

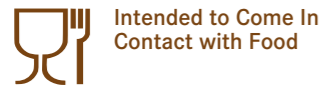
## Ultrafix Remover

Ultrafix Remover is a convenient gel which removes Ultrafix adhesives. This gel is effective on urethane-based and cyanoacrylate adhesives.

Ultrafix Remover is available in 1 and 5 kg containers.

| Ultrafix Product | Viscosity |
|------------------|-----------|
| Ultrafix CA 150  | Very High |
| Ultrafix CA 100  | High      |
| Ultrafix CA 50   | Medium    |
| Ultrafix CA 5    | Low       |

# Filip Sieve Cleaners



SAATI offers an assortment of Filip sieve cleaners that will help you to maximize your milling yield. Filip has been developing and producing sieve cleaners for over 100 years. The carefully calibrated design, selected materials and weight of Filip products imbue them with the efficiency, durability and safety that continually position them as the highest quality sieve cleaners available.



Style 100: Sieve Cleaning Brush with Solid Stainless Steel Slider Knob, Black Nylon Bristles for Wire Mesh



Style 101: Sieve Cleaning Brush with Solid Stainless Steel Slider Knob Natural Hair for Synthetic Mesh



Style 102: Sieve Cleaning Brush with Solid Stainless Steel Slider Knob White Nylon Bristles for Synthetic Mesh



Style 110: Sieve Cleaning Brush with Solid Stainless Steel Slider Knob Black Nylon Bristles for Wire Mesh - Large Model



Style 111: Sieve Cleaning Brush with Solid Stainless Steel Slider Knob Natural Hair for Synthetic Mesh - Large Model



Style 112: Sieve Cleaning Brush with Solid Stainless Steel Slider Knob White Nylon Bristles for Synthetic Mesh - Large Model



Style 120: Sieve Cleaning Brush with Plastic Slider Knob Black Nylon Bristles for Wire Mesh - Large Model



Style 121: Sieve Cleaning Brush with Plastic Slider Knob Natural Hair for Synthetic Mesh - Large Model



Style 122: Sieve Cleaning Brush with Plastic Slider Knob White Nylon Bristles for Synthetic Mesh - Large Model



Style 200: Sieve Cleaner with Studs with Solid Stainless Steel Slider Knob



Style 201: Sieve Cleaner with Studs with Plastic Slider Knob



Style 210: Sieve Cleaner with Studs with Solid Stainless Steel Slider Knob - Large Model





# Filip Sieve Cleaners



Style 211: Sieve Cleaner with Studs with Plastic Slider Knob - Large Model



Style 1103: Blue Sieve Cleaning Brush with Solid Stainless Steel Slider Knob Blue Nylon Bristles for Synthetic Mesh



Style 1200: Blue Sieve Cleaner with Studs with Solid Stainless Steel Slider Knob



Style 1201: Blue Sieve Cleaner with Studs with Plastic Slider Knob



Style 150: Double Cleaner with Black Nylon Bristles for Wire Mesh



Style 151: Double Cleaner with Natural Hair for Synthetic Mesh



Intended to Come In Contact with Food



Style 152: Double Cleaner with White Nylon Bristles for Synthetic Mesh



Style 250: Double Cleaner with Studs for Wire & Synthetic Mesh



Style 1153: Blue Double Cleaner with Blue Nylon Bristles for Wire Mesh



Style 1250: Blue Double Cleaner with Studs for Wire & Synthetic Mesh



Style 301: Pan Cleaner with Recess



Style 1301: Blue Pan Cleaner with Recess



# Sieve Cleaners



## Cotton Cleaner Green Stripe

First quality cotton cleaner made from densely woven material to create a hard surface. Strong quality threads increase the endurance of the material and life of the cleaner.



## Cotton Cleaner Blue Stripe

Second quality cotton cleaner having a softer surface as for 15% less threads in weft.



## Triangular Type Sieve Cleaner with Brushes & Solid Metal Slider Knob

Designed for cleaning all types of synthetic mesh material with gentle brushes. Cleans back-wire with action of metal slider knob. Available with nylon bristles or natural hair.



## Triangular Type Sieve Cleaner with or without Plastic Studs and Metal Slider Knob

Designed for all meshes 200  $\mu\text{m}$  & up. Cleans back-wire with action of metal slider knob.



## Light Plastic Sieve Cleaner with Metal Slider Knob in Desmopan

Designed for cleaning all types of meshes. Cleans back-wire with action of metal slider knob.



## Triangular Pan Cleaner in Desmopan

High elasticity polyurethane provides effective cleaning without damaging sieve frames.



## Diamond Plastic Pan Cleaner Round or Diamond Center

High elasticity polyurethane provides effective cleaning without damaging sieve frames.



# Sieve Cleaners



## Rectangular Sieve Cleaner

Rectangular in shape, used to keep sifting material clean with the movement and action of the sifter. This cleaner used in sieve trays with back wire



## Sieve Balls

Sieve balls used to keep mesh material clean. Available in a variety of sizes: 16, 25, 30 and 35 mm  $\varnothing$ . Materials: polyurethane, rubber and silicone



## Bühler Nova Plastic Sieve Cleaners with Knobs or Brushes

Three prong cleaner with a center bottom support and leg extending from one of the prongs. This leg gives a "teeter-totter" effect to keep the sieve cloth cleaner and free of product build-up. Made from flexible polyurethane materials with knobs as used on heavy synthetic and wire cloth materials. Designed for use in Bühler Nova Sieves



## Brushes for Purifiers

85 mm. Space between guides, tuft mounting frame in plastic, oscillating central body in nylon. Available in Synthetic, Animal & Horsehair. Dimensions available are 390-440-350-455-460.

# Accessories



## Pneumatic Stapler

Pneumatic stapler for staple on sieves for use with industrial strength staples.



## Stretching Pliers

Stretching pliers used to pull stretch sifter clothing in order to staple edge to perimeter of sieve tray.



## Rubber Mallet

Rubber mallet made with heavy duty plastic handle. Available in black or white color.





# Accessories



## Spatula

Spatula (flour slick) with a broad, flat, blunt blade used for spreading flour to examine the particle size.



## Scraping Knife

Scraping knife used to remove excess glue from surface of sieve.



## Plush

Thick plush for inner isolation of plansifters. Available in widths of 140 cm.



## Protective Tapes

1.8 mm thick polyester felt tape. Available in 10, 15 and 20 mm width.

# Accessories



## Microscope

Microscope for measurement viewing of mesh materials up to 40x.



## 10x Mesh Counter

Small foldable mesh counter in both inches and mm measurements.



## Brush for Break Rolls

In whole goose feather. Available in lengths of 1000 and 1250 mm.







# —SAATI

## **SAATI S.p.A**

Via Milano, 14  
22070 Appiano Gentile (Co), Italy  
Tel : +39 0319711  
Fax: +39 031 933392  
E-mail: info.it@saati.com

## **SAATI Americas Corp.**

201 Fairview St. Extension  
Fountain Inn, SC 29644  
Toll-Free: +1 800 431 2200  
Fax: +1 864 862 0089  
E-mail: info.us@saati.com

## **SAATI Technical Fabrics (Tianjin) Co., Ltd.**

Cross Of Saida 2nd Branch Road and Saida Century Avenue,  
Xiqing Economic Development Area,  
Tianjin, China 300385  
Tel: +86 22 23960843  
Fax: +86 22 23962116  
E-mail: info.cn@saati.com

## **SAATI Korea Ltd.**

22, Dangjeong-ro, Gunpo-si Gyeonggi-do, 435-833, Korea  
Phone: +82 31 429 9337  
Fax: +82 31 429 9338

## **SAATI France**

74 Route de Bapaume 80360 Sailly Saillisel, France  
Phone: +33 3 22 85 77 00  
Fax: +33 3 22 85 77 00  
E-mail: info.fr@saati.com

## **SAATI Deutschland GmbH**

Ostring 22 46348 Raesfeld, Germany  
Phone: +49 2865 95800  
Fax: +49 2865 958010  
E-mail: info.de@saati.com

## **SAATI Serigrafía Ibérica, S.a.**

Pol. Ind. El Mijares, C/ Industria, nº 13 12550  
Almazora, Castellón, Spain  
Phone: +34 964550688  
Fax: +34 964551049  
E-mail: info.es@saati.com

## **SAATI Russia**

23 Shvetsova str. 198095 Saint-Petersburg, Russia  
Phone: +79 062788343

**Connect with SAATI**

