

Industrial Graphic

mesh, emulsion, chemistry, and equipment
for general graphics screen printing





We cross-innovate



We cross-innovate

TABLE OF CONTENTS

| | |
|---|-----------|
| Company Information | 02 |
| SAATI Hi-R Mesh | 04 |
| SAATI HiBond Plus Mesh | 06 |
| SAATI HiLo Mesh | 08 |
| SAATI Adhesives | 10 |
| SAATI Top 12 Plus Stretching Clamps | 14 |
| SAATI Mesh Prep/Degreasers | 16 |
| SAATIgraf Emulsion | 18 |
| SAATI Liquid Blockouts | 22 |
| SAATI ProCoat Series Automatic Coaters | 24 |
| SAATI LTS6080 Laser Image/Exposure Unit | 26 |
| SAATI ProLite 450 LED Exposure Lamp | 28 |
| Quality Control Devices | 30 |
| Duralife Squeegee | 36 |
| SAATI Washout Equipment | 38 |
| SAATI Reclaim Chemistry | 40 |
| Notes | 44 |

SAATI Graphics Product Suite

The Complete Package for Elite Graphics Printing



Perfecting the Art of Precision Woven Fabric

SAATI has a long history of manufacturing and distributing precision woven fabrics. Over the past eight decades, SAATI has perfected the technology of manufacturing fabrics to a high degree of precision.

Every phase of production is carefully monitored, employing frequent in-house testing and rigorous inspection to ensure consistent quality.

Unsurpassed Customer Support

With business offices and warehouses throughout the world, SAATI provides strong local support, expert response to customer inquiries, and quick delivery to all locations.

SAATI Sales Representatives and Engineers are committed to a tradition of continuous innovation. They understand their customers' applications and offer the most appropriate product in a form that best meets their customers' needs.

The continuing success of SAATI is founded on the company's ability to design and manufacture innovative, precision woven fabrics that meet the needs of its customers' most demanding applications.



Whatever your application, there's a reliable SAATI mesh to meet your needs. With SAATI mesh, you'll improve your print quality and save money. Its excellent dimensional stability improves your registration, while its uniform mesh openings and fabric thickness produce controlled ink deposits. SAATI ultra-orange and ultra-yellow dyed fabrics assure you optimum resolution. Plus their durability means your screen endures longer runs and numerous reclaimings.

SAATI distributes high precision woven mesh fabrics developed from synthetic raw materials such as polyester and polyamide (nylon), with specialty finishes to optimize performance. Our fabrics meet the needs for such diverse market segments as graphics, textile, ceramic, electronics, glass, containers.

SAATI is the largest single producer of ISO 9001-certified synthetic screen fabrics worldwide, you are assured of all the benefits when making your decision to purchase SAATI Mesh. Our technical support is unrivaled.

Quality Control Inspection Label

SAATI individually inspects every roll of mesh and attaches a Quality Control Inspection Label with the roll's characteristics and a traceable barcode. Measurements are taken with each roll and not just per batch. State-of-the-art automated measuring equipment is employed for consistent and accurate results. SAATI holds itself to the highest standards by measuring their performance and giving you the actual measurement data.



SAATI Hi-R Mesh

Premium Quality High-Tension, Low-Elongation Mesh With The Value-Added Benefit Of Surface Modification



SAATI HI-R is a high-modulus, low-elongation monofilament polyester screen printing fabric with a proprietary surface treatment ideal for all traditional applications.

Key Characteristics

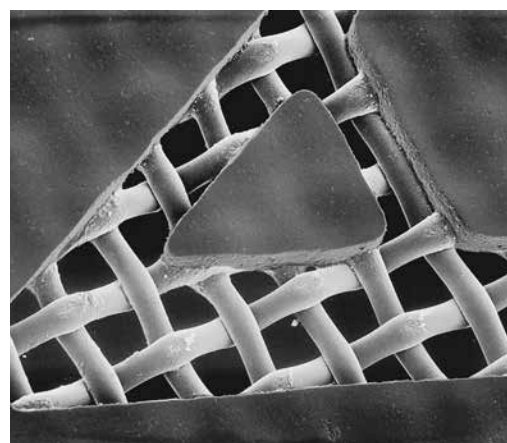
- High tension, low elongation, optimally performing monofilament polyester
- Superior stencil adhesion, resulting in less stencil breakdown on press, delivering longer print runs far beyond other conventional treated fabrics
- Shorter exposure times, due to increased stencil adhesion.
- Holds finer detail with no compromise in stencil durability (halftones, fine lines etc.)
- In Most cases, no degreasing pretreatment required prior to stencil processing.

Benefits Of Surface Treatment

- Improved adhesion characteristics of small halftone dots and fine lines
- Even and consistent surface characteristics, enhanced for extreme durability
- Excellent ink release properties
- Ready-to-use, the degreasing process can be eliminated

Other Advantages

- Applied to fabrics in widths up to 300 cm
- Safe under exposure with all emulsion/film types: Diazo, Dual Cure, and Photopolymer
- Excellent for use with abrasive printing conditions, inks and pastes
- Excellent performance on virgin fabric



| Mesh Count | | Type Of Weave | Thread Diameter | Mesh Opening | Overall Fabric Thickness | Open Area | Theoretical Ink Deposit | | Max. Recom. Tension | Specific Cross Section |
|------------|--------|---------------|-----------------|--------------|--------------------------|-----------|---------------------------------|-------------|---------------------|-------------------------|
| per inch | per cm | TW or PW | microns | microns | microns | % | cm ² /m ² | in./sq. yd. | N/cm | SCS mm ² /cm |
| 86 | 34 | PW | 100 | 185 | 173 | 41 | 71 | 3.64 | 35-40 | 0.267 |
| 110 | 43 | PW | 80 | 150 | 132 | 43 | 57 | 2.88 | 35-37 | 0.216 |
| 125 | 49 | PW | 70 | 130 | 116 | 40 | 46 | 2.28 | 30-34 | 0.188 |
| 140 | 55 | PW | 64 | 120 | 105 | 41 | 43 | 2.2 | 26-31 | 0.176 |
| 158 | 62 | PW | 64 | 90 | 106 | 32 | 34 | 1.66 | 30-34 | 0.199 |
| 180 | 71 | PW | 55 | 80 | 91 | 33 | 30 | 1.53 | 25-30 | 0.168 |
| 196 | 77 | PW | 48 | 78 | 80 | 36 | 29 | 1.48 | 24-26 | 0.139 |
| 196 | 77 | PW | 55 | 70 | 90 | 28 | 25 | 1.28 | 27-32 | 0.182 |
| 230 | 90 | PW | 40 | 68 | 62 | 38 | 24 | 1.23 | 20-24 | 0.113 |
| 230 | 90 | PW | 48 | 55 | 81 | 27 | 22 | 1.08 | 27-29 | 0.162 |
| 255 | 100 | PW | 40 | 55 | 64 | 31 | 20 | 1.02 | 26-28 | 0.125 |
| 255 | 100 | PW | 48 | 40 | 81 | 16 | 13 | 0.66 | 30-34 | 0.181 |
| 280 | 110 | PW | 34 | 53 | 56 | 35 | 20 | 1.02 | 22-24 | 0.099 |
| 280 | 110 | PW | 40 | 47 | 69 | 26 | 18 | 0.92 | 25-30 | 0.138 |
| 305 | 120 | PW | 31 | 53 | 48 | 40 | 19 | 0.97 | 21-24 | 0.09 |
| 305 | 120 | PW | 34 | 45 | 54 | 29 | 16 | 0.82 | 24-26 | 0.108 |
| 305 | 120 | PW | 40 | 38 | 67 | 20 | 13 | 0.66 | 27-32 | 0.15 |
| 330 | 130 | PW | 34 | 39 | 55 | 26 | 14 | 0.71 | 24-27 | 0.118 |
| 355 | 140 | PW | 31 | 38 | 48 | 28 | 13 | 0.66 | 20-22 | 0.105 |
| 355 | 140 | PW | 34 | 29 | 56 | 16 | 9 | 0.46 | 23-26 | 0.127 |
| 355 | 140 | TW | 34 | 32 | 60 | 20 | 12 | 0.61 | 23-26 | 0.127 |
| 380 | 150 | PW | 31 | 29 | 49 | 20 | 10 | 0.51 | 22-24 | 0.113 |
| 380 | 150 | PW | 34 | 25 | 56 | 13 | 7 | 0.35 | 25-27 | 0.136 |
| 380 | 150 | TW | 34 | 28 | 61 | 17 | 10 | 0.51 | 25-27 | 0.136 |
| 420 | 165 | PW | 27 | 30 | 46 | 25 | 12 | 0.61 | 17-21 | 0.094 |
| 420 | 165 | PW | 31 | 25 | 49 | 17 | 8 | 0.41 | 24-26 | 0.125 |
| 460 | 180 | PW | 27 | 25 | 43 | 20 | 8 | 0.41 | 18-22 | 0.103 |

SAATI HiBond Plus[®] Mesh

The Ultimate Surface-Modified Mesh

SAATI Hibond Plus is a high tension/low elongation polyester monofilament screen-printing fabric with a "vacuum gas" modified surface to enhance stencil performance, offering added bonuses to the stencil maker and printer alike: time savings and stencil durability. All screen fabrics imperatively require a thorough mesh treatment before stencil processing, yet SAATI Hibond Plus is delivered ready-to-use.

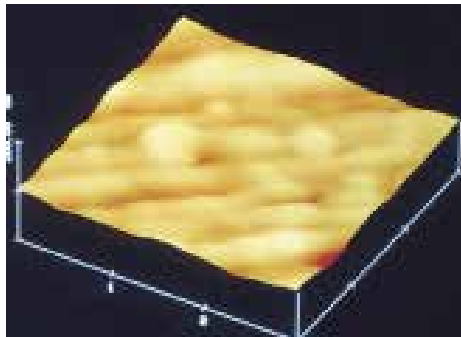
Available in widths up to 100", its special factory finishing renders the use of adhesion promoters obsolete and in some cases reduces ghost imaging. Apart from the production time savings, it will extend the life of stencils from single to triple, or more. This is a unique feature especially beneficial when printing conditions are unusually harsh, either due to the nature of the substrate or the ink system.

SAATI HiBond Plus For

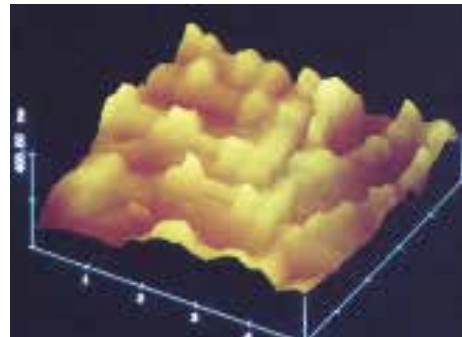
Fine Detail Printing

While underexposure is detrimental to the chemical and mechanical resistance of the stencil, there are circumstances where it is unavoidable in order to resolve the finest details of a stencil. A typical example is in the production of high line count halftones and the resolution of the highlight dots.

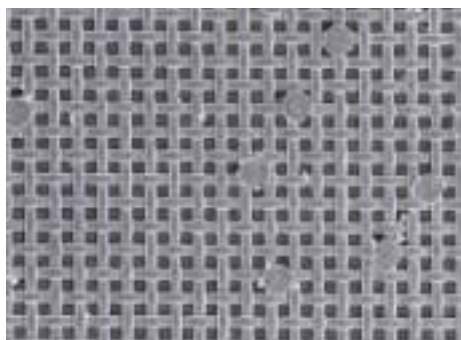
SAATI Hibond Plus will allow for safe underexposure making it possible to cope with up to a 50% time reduction without loss of stencil adhesion with dual cure photo-emulsion and capillary stencil films.



Microsection of fabric surface
(AFM microphoto from conventional fabric)



Microsection of fabric surface
(AFM microphoto from SAATI HiBond Plus)



Conventional mesh halftone area
with halftone dots missing



SAATI HiBond Plus halftone area with no stencil loss



Recommendations For The Handling Of SAATI HiBond Plus

Preparing For Tensioning And Screen Storage

Since SAATI Hibond Plus is supplied ready to use, the user is expected to handle the product with clean hands, making sure that it does not come in contact with contaminated surfaces. Potential areas for grease contaminants include tensioning devices.

Not All Treatments are the Same!

SAATI's Vacuum Gas plasma treatment is a **deeper** and **permanent** surface treatment. Other competitors "chemically" treat their fabrics. These treatments wash off after one use and are ineffective for the life of the screen. The degree of surface modification of Hi-Format could not happen by any other method.

Increased Printing Productivity & Cost Savings

- The ultimate degree of increased stencil adhesion, resulting in less stencil breakdown on press, delivering longer print runs far beyond other conventional treated fabrics.
- Shorter exposure times due to increased stencil adhesion (halftones, fine lines etc.)
- Most cases, no degreasing pretreatment required prior to stencil processing.
- What remains is a NANO-etched surface with a greater # of hydroxyl groups that results in the absolute ultimate in surface bonding.

NOTE: Designate an easy access area for storing, unrolling and cutting the piece of fabric necessary for screen stretching. The work surface should be as smooth and clean as possible.

If screens are processed in an area where dust is inevitable, the screen surface can simply be washed with a spray of cold water to remove any dust particles that may have adhered to it.

| Stencil Processing Time Chart | | |
|-------------------------------|-----------------------------------|----------------------------------|
| Action | Traditional Fabric Time (minutes) | SAATI HiBond Plus Time (minutes) |
| Wetting of Fabric | 0.5 | 0.0 |
| Roughening | 5.0 | 0.0 |
| Rinsing | 0.5 | 0.0 |
| Drying | 10.0 | 0.0 |
| Wetting (Film) | (0.5) | (0.5) |
| Screen Coating | 5.0 | 5.0 |
| Drying | 20.0 | 20.5 |
| Total Time | 41.0 | 25.0 |
| Time Savings of 40% | | |

SAATI HiLo Mesh

Extreme Low Elongation Mesh For High-End Electronics Printing



SAATI HiLo is a super high modulus monofilament polyester mesh. It was developed specially for tight tolerance printing to fabricate high tech products, including touch screen panels, solar cells, and membrane switches.

SAATI uses a special fiber whose polymeric structure gives extraordinary physical & mechanical properties to the product:

Higher dimensional stability

1. Extremely low mesh relaxation
2. Plasma-activated surface for enhanced stencil adhesion

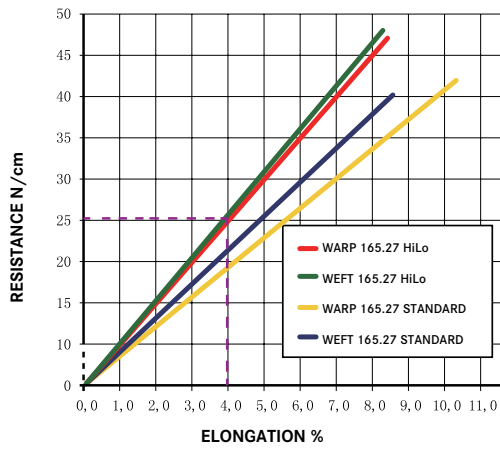
Key Product Characteristics:

- Top print quality
- Less tension loss during the print run
- Consistent performance during printing results in process reliability improvements
- Finer line resolution
- Improved ink flow
- Superior stencil adhesion: less stencil breakdown and printing life far longer

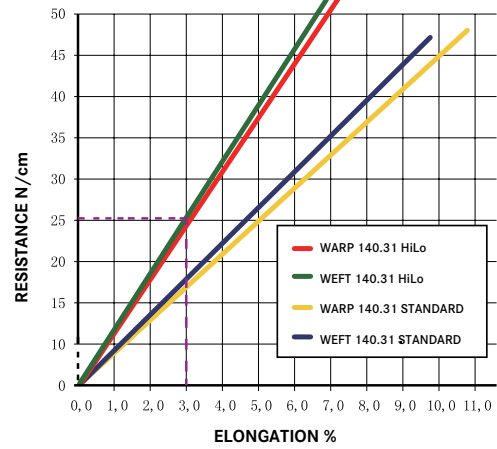
| Availability of SAATI HiLo MESH | | | | | | |
|---------------------------------|----------------------|-------|-------------------|-------------|----------------|---|
| Mesh Count (cm) | Thread Diameter (µm) | Weave | Mesh Opening (µm) | Open Area % | Thickness (µm) | Theoretical Ink Volume (cm ³ /m ²) |
| 180 | 27 | PW | 21 | 15 | 40 | 7,0 |
| 165 | 27 | PW | 29 | 23 | 42 | 9,6 |
| 150 | 31 | PW | 30 | 21 | 43 | 8,7 |
| 140 | 31 | PW | 35 | 25 | 45 | 10,8 |
| 120 | 34 | PW | 43 | 26 | 53 | 14,1 |

Elongation Statistics

HiLo 165.27

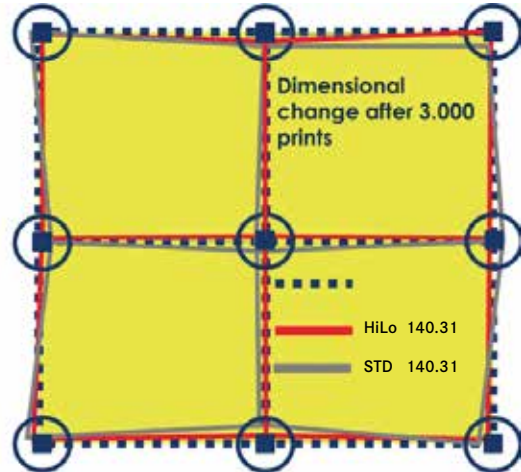
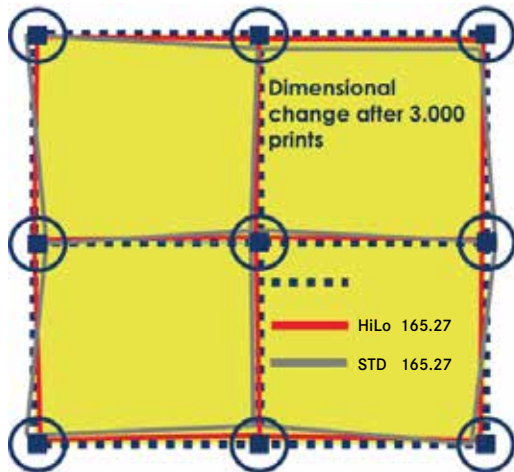


HiLo 140.31



The HiLo Warp & Weft overlapping is almost perfect. At 25N tension level the HiLo 140.31 Elongation Percentage is around 3%, whereas the 165.27 is around 4%.

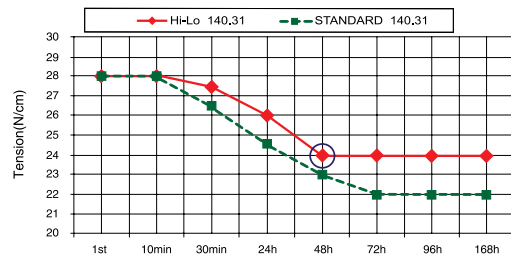
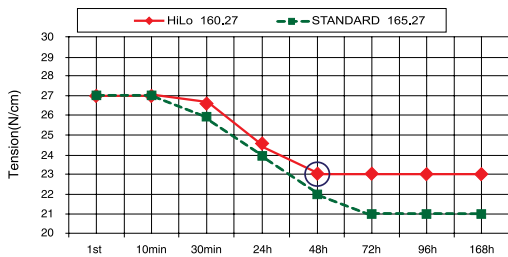
Dimensional Change



Extremely low mesh relaxation guarantees:

- Low tension loss after stretching
- Mesh ready to use in less time, as it can be brought to required tension quicker
- Printing quality consistency and improved ink flow during all production run

Tension Loss



SAATI Adhesives

Adhesives for Screen Production and Securing Media On-Press



Ultrafix SB Plus Series

Fast-curing, 2-part, urethane-based adhesive with superior resistance to aggressive solvents

- Remove frame from stretching system only minutes after applying
- Can be applied over old adhesive residue
- Superior resistance to solvents, heat, and automatic cleaning machines
- Low-viscosity adhesive for fine to medium mesh counts
- For use on wood and metal frames

Available in 0.75 and 4,5 kg containers





Ultrafix SB2 Plus with Catalyst

Fast-drying, 2-part, urethane based adhesives

- Two-component polyurethane adhesive
- Blue with low viscosity for medium to fine mesh counts
- Mounts screen mesh onto aluminum, steel, iron, plastic-coated and wood frames
- 60-90 minute pot-life, and can last longer in a cool, dry environment
- Extraordinary initial adhesion allows screens to be removed from the stretching system only minutes after applying
- Superior resistance to solvents, heat and automatic cleaning machines
- Superior flexibility polyurethane adhesive prevents cracking
- Quicker drying time than other urethane adhesives saves time in stretching

Ultrafix SB9 Plus With Catalyst

Fast-curing, 2-part, urethane-based adhesive with superior resistance to aggressive solvents

- Fast drying, red 2-component polyurethane adhesive
- Medium/Low viscosity for easy application on a wide range of mesh counts
- Can be used to attach both polyester and stainless steel mesh to aluminum, steel or wood frames
- Fast drying time and maximum initial adhesion allow screens to be removed from the stretching system only minutes after application
- Short curing time to reach full solvent and temperature resistance, after drying, allows immediate use of screens
- Extended pot life allows for easy and continuous work cycles
- Superior solvent resistance prevents mesh delamination during screen cleaning



Ultrafix CA Series

*Spray-activated cyanoacrylate adhesives
with aerosol/pump activator*

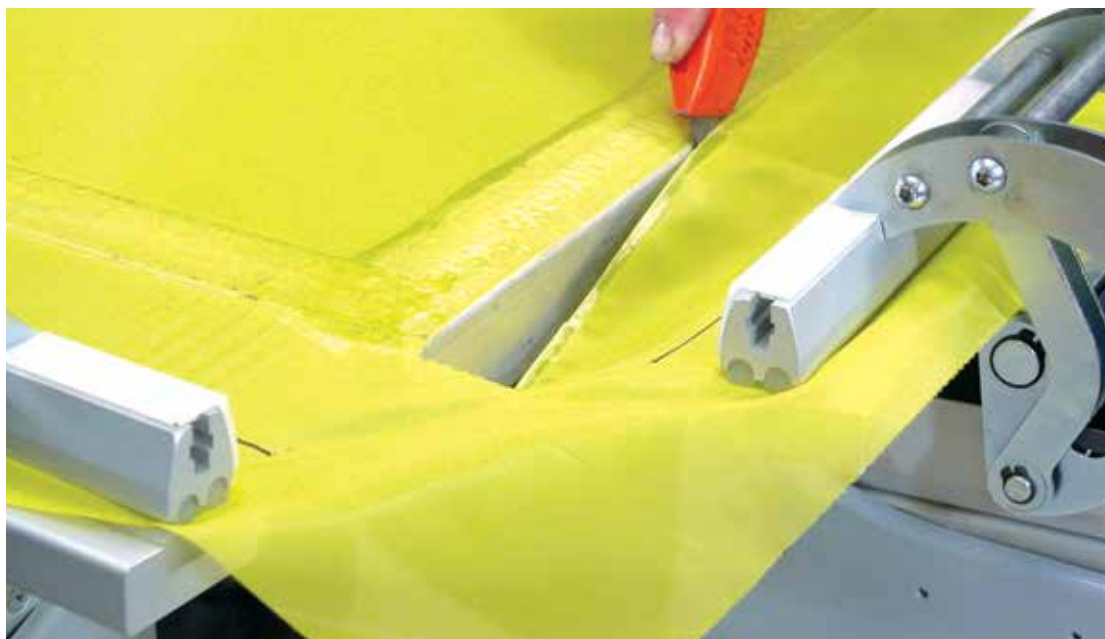
- Cures instantly
- Highly resistant to water and solvents
- Provides excellent bonding strength, high shear strength and low peel
- For use on wood and metal frames

Available in 16 oz. containers

| Appropriate Ultrafix by Mesh Count | |
|------------------------------------|----------------|
| 130-200 | Ultrafix CA50 |
| 77-140 | Ultrafix CA100 |
| 7-90 | Ultrafix CA150 |

SAATI Adhesives

Adhesives for Screen Production and Securing Media On-Press



Ultrafix CA™ 50, 100, 150

Spray-activated cyanoacrylate adhesives

- Cures instantly
- Highly resistant to water and solvents
- Provides excellent bonding strength, high shear strength and low peel
- For use on wood and metal frames

Available in three different viscosities to match your mesh count. Ultrafix CA50 is available in 50g containers. Ultrafix CA100 & CA150 are available in 450g containers.

Ultrafix CA Activator

Cures cyanoacrylate adhesive instantly

- Available in two types of dispensers: aerosol and pump
- For use with all Ultrafix CA series and C-Flex

Activator A (aerosol) is available in 160-g containers.

Ultrafix Remover

Removes Ultrafix adhesives

- Convenient gel or liquid form
- Effective on urethane-based and cyanoacrylate adhesives

Available in 1kg and 5kg containers.

SAATI Top 12 Plus Stretching Clamps

Rapidly Stretch Screen Off-Contact with Durable, Intuitive Stretch Clamps

The new SAATI Top 12 Plus Clamp provides optimum pneumatic screen tensioning. This highly advanced yet easy to use system achieves the highest recommended tensions more uniformly, without over-tensioning the corners. It provides the greatest stability of any system available. Among the most notable features of this premier stretching system is its independent or simultaneous warp/weft tensioning capability (when used with optional control panel).

In addition, its unmatched, patent-pending “raise/lower” design pre-stresses the frame while simultaneously eliminating mesh contact with the frame surface during stretching. This specialized “non-contact” stretching eliminates any hazardous friction, uneven tensioning or resultant tears caused by distorting the mesh when it comes in contact with rough or uneven frame surfaces.

The long 120 mm stroke per clamp allows for almost 26 cm of total stretch in each direction. A special pneumatic device lifts the mesh above the frame for stretching, while the clamps hold (and pre-stress) the frame. Once the desired tension is achieved, the mesh is lowered for adhesion to the frame.

SAATI clamps feature a uniquely-designed modular plug-in system for easy set-up in minutes.

Technical Features

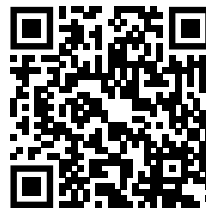
- Internal components extruded in aluminum, exterior in powder coated steel
- Jaws widths: standard 250mm, optional 150mm
- Independent pneumatic control for both horizontal axis (via optional control panel)
- 120 mm stroke length
- Maximum tension: 60 N/cm
- Daisy chain connection, no manifold needed
- Adjustable frame support

Benefits

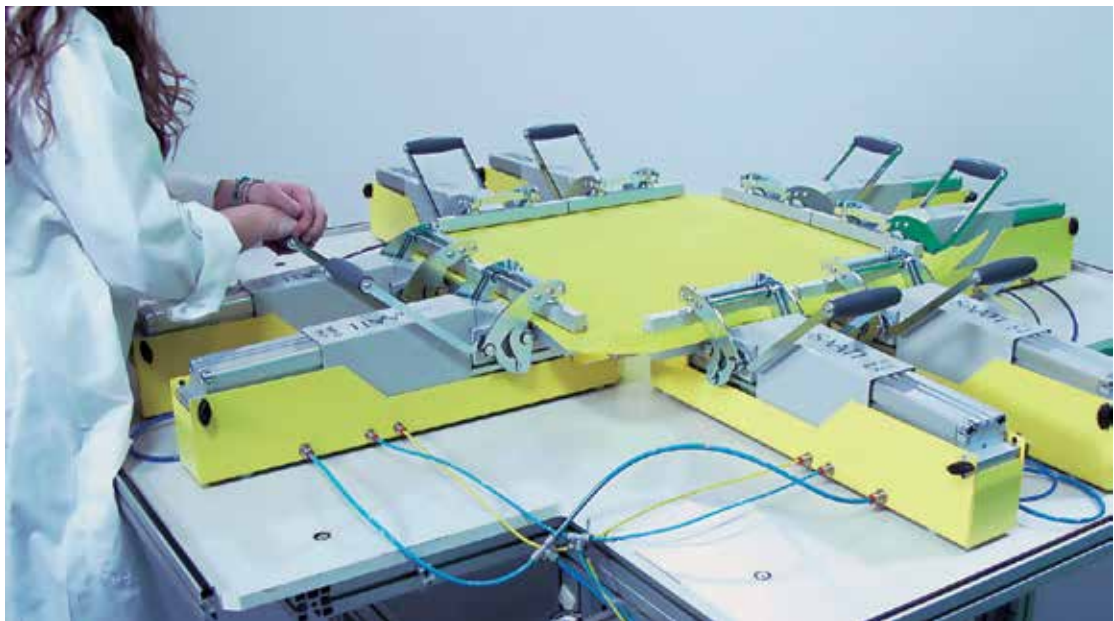
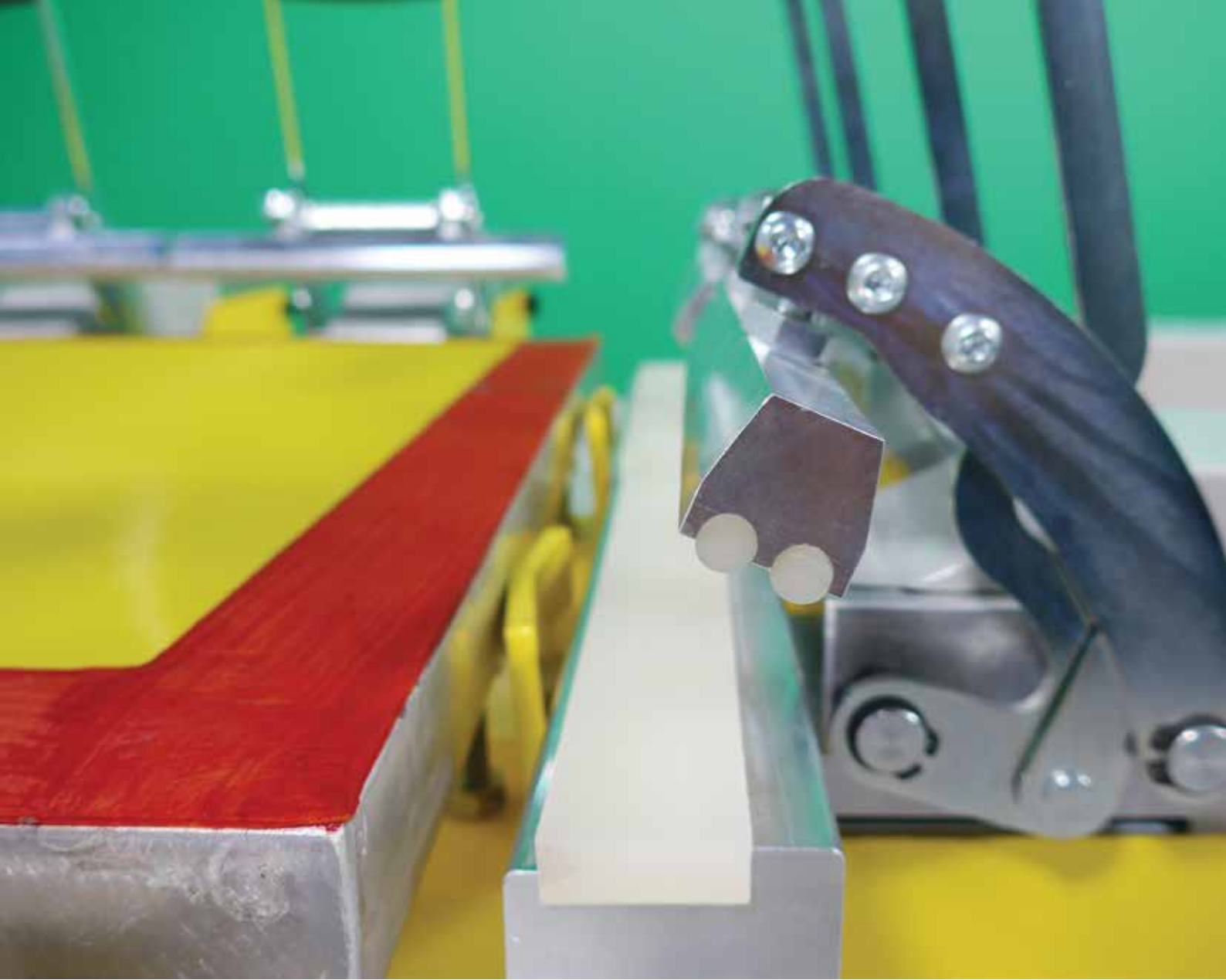
- Higher tension, longer stroke
- Tension from small frames to extremely large frames
- Very high degree of repeatability
- High reliability, easy maintenance



| Top 12 Plus Technical Specifications | |
|--------------------------------------|--|
| Clamp Weight | 10 kg |
| Clamp Total Length | 652 mm |
| Stretching Stroke | 120 mm |
| Lifting Stroke | 15 mm |
| Clamp Length to Frame Contact Point | 540 mm |
| Maximum Tension | 60 N/cm |
| Compressed Air | 95-100 PSI (humidity free line required) |
| Jaw Width | 250mm (standard) 150mm (on request) |
| Table Size | Frame External Size + 108mm |



Scan this QR code to watch a video demonstration of the SAATI Top 12 Stretching Clamps



SAATI Reclaim Chemistry

World Class Chemicals for Each Step of Screen Cleaning

Mesh Prep/Degreasers

To Prepare New or Recycled Mesh to Receive Fresh Coatings.

SAATI Direct Prep Series

- Added color ensures complete rinse from mesh
- Highly recommended for use with photopolymer direct emulsions
- Eliminates fisheyes and streaks in coatings
- Maximize exposure latitude and adhesion for both emulsion and capillary film stencils
- Optimizes resolution, definition and stencil life

Available in 1, 5 and 200 kg containers

Direct Prep 2

Combination Degreaser/Wetting Agent

- Ready-to-use liquid wetting agent and degreaser
- Powerful detergent and degreaser in one step restores mesh after reclaiming
- Blue

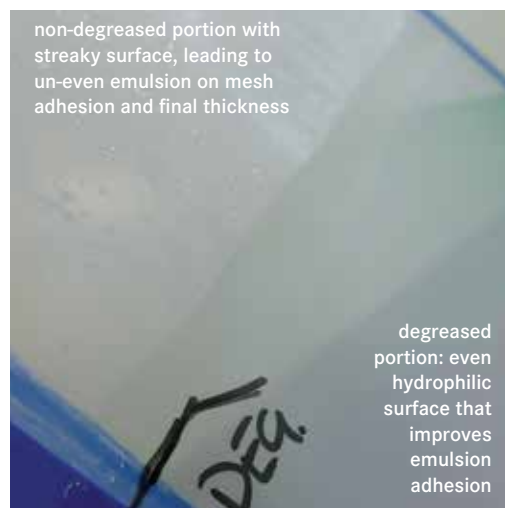
Available in 1, 10 and 200 kg containers

Direct Prep 3

Concentrated Degreaser/Wetting Agent

- 10 to 1 concentrated liquid wetting agent and degreaser
- Concentrated formula for economy
- 100% Biodegradable

Available in 1, 10 and 200 kg containers





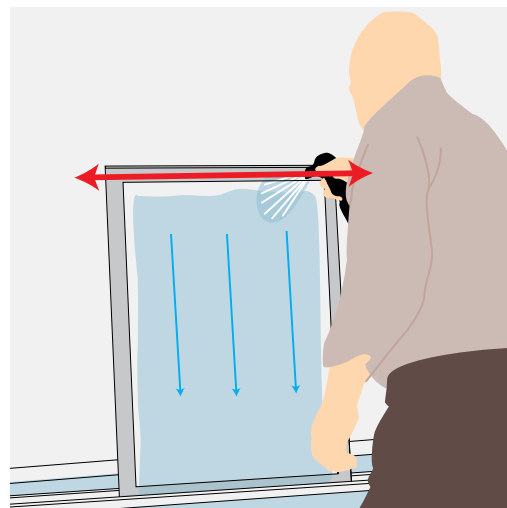
Tech Tip: Correct Direct Prep Rinsing Technique

Following the application and wash-off of SAATI Direct Prep products, the final rinse technique is critical to preparing an optimal coating surface.

To correctly rinse a pretreated screen, flood it with a garden hose at the top, pointing the nozzle downward and rinse horizontally across the top of the screen, to create an unbroken cascade effect.

This technique results in a uniformly wet surface that will dry evenly and later coat evenly.

If you notice disruptions in the flow of water down the fabric then you have identified remaining contaminants on the mesh surface that must be removed before they can compromise coating quality or create fisheyes in a coated screen, or pinholes in a developed stencil.



SAATI Emulsion

The World Class Range of Emulsions for All Types of Graphics Printing

SAATIgraf Emulsion

The World Class Range of Emulsions for All Types of Graphics Printing

SAATI's Grafic emulsion range encompasses pure photopolymer, dual-cure and diazo technologies. Grafic emulsions feature wide latitude and yield high resolution stencils with fewer pinholes. The high solids content and medium viscosity of Grafic emulsions produce low Rz stencils with good print definition on any mesh count. All Grafic emulsions are easy to reclaim, non-hazardous and totally biodegradable.

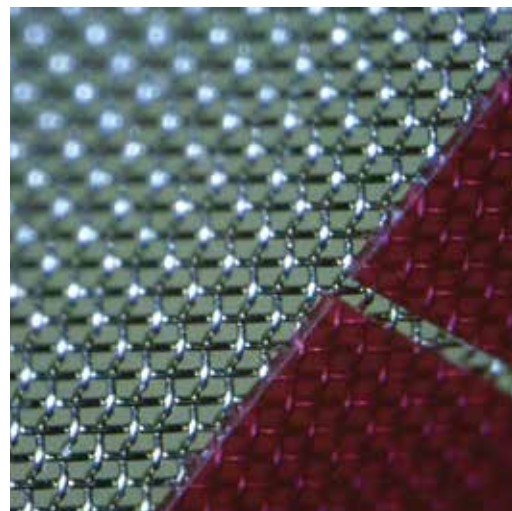


SAATIgraf HSX

Dual-cure for High tech electronics and industrial printing including touch screen, solar cell, and ceramic capacitor

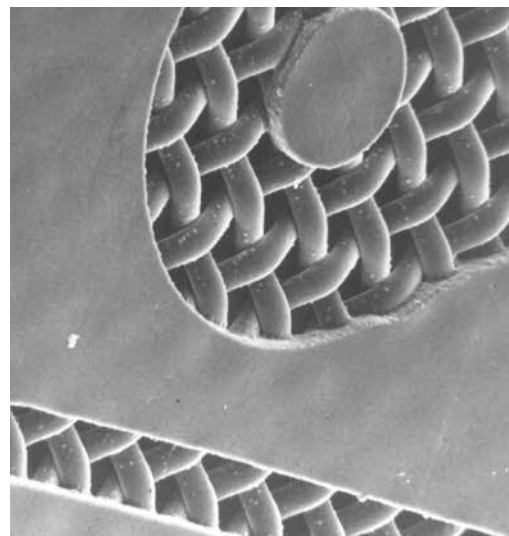
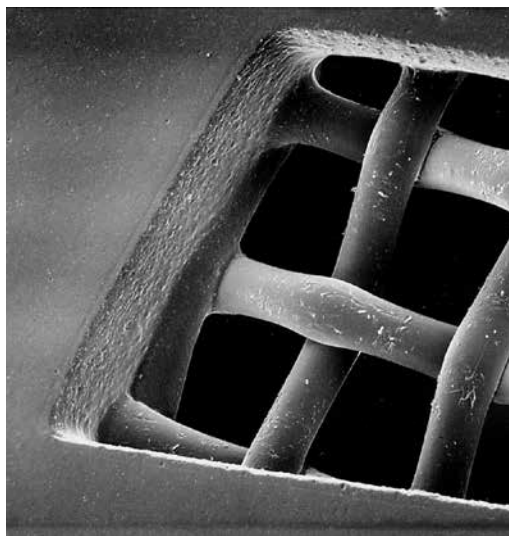
- Blue or red dualcure emulsion
- Dual-cure direct emulsion with very high solvent resistance for industrial printing
- Extremely high resolution and definition
- Designed for use on stainless steel and synthetic mesh
- 37% solids content

Available in 0,9, 4.5 and 200 kg containers



SAATIgraf Emulsion

The World Class Range of Emulsions for All Types of Graphics Printing



Grafic PU

Versatile photopolymer graphics emulsion for general graphics printing

- Blue pure photopolymer emulsion very resistant to solvent
- Resistant to UV-cured, plastisol and solvent-based ink. Water resistant when post-exposed
- High solids content and medium viscosity for excellent print definition on any mesh
- Exposes 4 times faster than diazo or dual-cure emulsions
- Easy to reclaim.

Available in 1, 5, 20, 50 and 200 kg containers

SAATIgraf HU

Dual-Cure for general industrial and display graphics

- Dual-cure emulsion resistant to UV-cured and solvent-based inks
- Excellent print definition and resolution on any mesh
- Superior solvent resistance
- Easy to reclaim
- Can be used also on stainless steel mesh

Available in 0,9, 1 and 4,5 kg containers



SAATIgraf CTS7

Fast Exposing SBQ Photo Emulsion Designed For Use With Computer To Screen

- Blue, one part pure photopolymer emulsion
- Highly solvent-resistant and super easy reclaiming
- Designed for use with all solvent-based and UV-Cured inks
- Exposes 4 times faster than diazo or dual-cure emulsions
- Super easy to reclaim, no pressure washer required
- High resolution and definition for a wide exposure latitude
- 38% solids & medium viscosity for optimum coating quality & stencil performance

Available in 1, 5, 20, 50 and 200 kg containers

SAATIgraf CTS10

Fast Exposing SBQ Photo Emulsion Designed For Use With Computer To Screen

- Blue, one part pure photopolymer emulsion
- Highly solvent-resistant and super easy reclaiming
- Designed for use with all solvent-based and UV-Cured inks
- Exposes 8 times faster than diazo or dual-cure emulsions
- Super easy to reclaim, no pressure washer required
- High resolution and definition for a wide exposure latitude
- 38% solids & medium viscosity for optimum coating quality & stencil performance

Available in 5, 20, 120 and 200 kg containers

DCF SUPER SHARP

New concept of capillary film developed to meet the needs of industrial glass printing markets

- Red capillary film specially designed for the most demanding glass printing
- Highly solvent and abrasive resistance
- Enhanced sharpness for maximum image resolution and print definition
- Can be used with synthetic and stainless steel mesh

SAATI Blockouts

High Quality Liquid Blockout Products to Seal Screens and Fill Pinholes

SAATI Finish Series blockouts/screen fillers offer both high performance and user friendliness. Finish blockouts contain no solvents and provide increased filling power. All have pleasant-smelling formulations and are both non-hazardous and biodegradable. Finish blockouts spread smooth and uniformly for optimum drying and filling. Use to cover open mesh areas and pinholes.

Finish S1

Our most popular and economical blockout

- Red, water-based liquid blockout
- For use with solvent-based, UVcured, and plastisol ink
- Remove with water

Finish S2

Increased Filling Power

- Blue, water-based liquid blockout
- Increased filling power and more resistance to breakdown in high-stress printing such as with cylinder presses
- For use with solvent-based, UV-cured, and plastisol ink
- Remove with water

Finish S3

Highest Viscosity Finish S Product

- High viscosity version of Finish S2
- For optimum results on low mesh count screens

Finish W1

Unique Reclaimable, Water-Based Blockout

- Resistant to water and solvent
- Unlike other water-based blockouts, offers superior water resistance simply upon drying
- Resistant to water-based, plastisol, UV-cured and solvent-based ink
- Very high solids content offers increased durability
- Can be removed with emulsion reclaiming chemicals and a pressure washer

*Finish blockouts are available in 1 & 5 kg containers.
Finish S2 and W1 are also available in 200 kg containers.*





Finish WU2 A&B

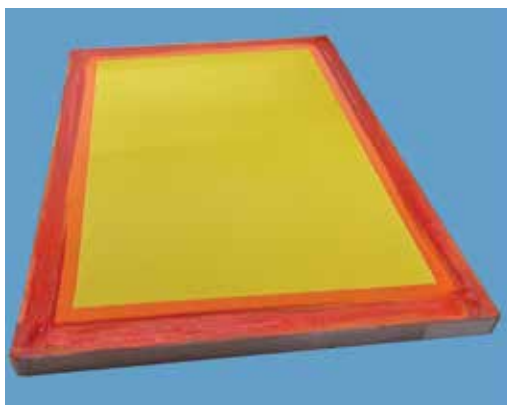
Two Part Polyurethane Screen Sealer

Application

Provides protective coating for frame adhesive and permanently replaces blockout tape.

Characteristics

- Red water-based two part polyurethane
- Easy to apply by scoop coater, brush or scraper
- Tack free immediately after drying
- One hour plus mixed pot life
- Gains 100% water, solvent and corrosive resistance after curing for 24 hours



Features/Benefits

- Low odor, non flammable and easy to mix & apply
- Water based formula - does not attack & weaken frame adhesive
- Can be applied onto freshly dry glue on stretching table - to accelerate full cure & bonding

Available in 1 kg containers



SAATI Pro Coat Series

Programmable Automatic Screen Coaters for Affordable Consistency and Control

The SAATI Pro Coat Series provide perfect solutions for the small to medium shops that think automatic coating is too expensive to justify. Now affordable consistent quality can be accomplished with this easy to use coater. It will be realized quickly that a consistent coated screen solves many of the day to day quality issues that make it to press. This machine is truly a plug and play workhorse.

Characteristics

- Coats screens simultaneously front and back
- Fully programmable
- Set dwell, coats and speed per side
- Carriage enclosed for safety
- Simple coating troughs attachment
- Belt driven for smooth maintenance free operation
- 220 volt, 20 amp
- 90 psi less than 1 cfm
- 6 month warranty

Features

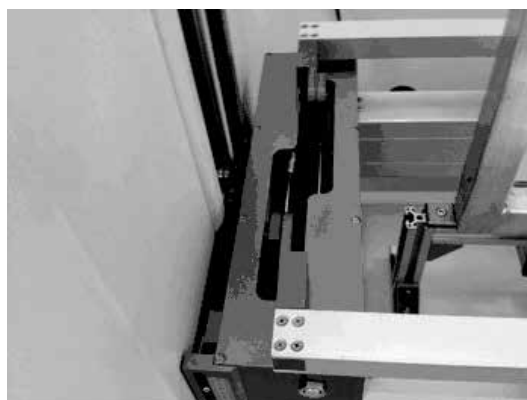
- Set a program and get repeatable stencils, which result in a more repeatable print
- Maximize consistency
- Easy to use touchscreen display

Benefits

- Set a program and get repeatable stencils, which result in a more repeatable print

Installation

Due the unique construction of the SAATI Pro Coat machine, it is easily installed by customer. Simply connect an airline and plug-in. Easy to operate with no assembly is required. Leasing available, please inquire.





SAATI ProCoat 25x36

Automatically coat 1 or 2 screens up to 63,5x91,5 cm

Characteristics

- Coats two screens, simultaneously front and back.
Ex. two 51x61, 58,5x79, or 63,5x91,5 cm at a time
- Coats a single screen up to 107 x 127 cm

Features

- Motorized upper carriage. Easy adjustment for different frame profiles
- Foot pedal control of upper carriage and frame clamps for easy loading and unloading of screens

Benefits

- Double your standard size screen coating output and maximize consistency

Size

208,5 x 193 x 56 cm, approximately 340 kg



SAATI ProCoat SF Container

Automatically coat 2 screens up to 40,6x61 cm

Features

- Manual upper carriage. Easy adjustment for different frame profiles
- Included stand for convenient working height

Benefits

- Easy use allows inexperienced operators to coat perfect screens

Size

170 x 119 x 51 cm without legs. 170 x 185,5 x 51 cm on legs. Approximately 281 kg

SAATI LTS 6080 Laser Image/Exposure Unit

High Resolution Direct Laser Image & Exposure Unit



Scan this QR code to watch a video demonstration of the SAATI LTS 6080

Description

Self-contained, high efficiency direct laser computer to screen Image & Exposure unit, operated by PC with optional RIP.

Applications

Designed to efficiently image and expose images up to a maximum size of 60x80 cm without a vacuum or film positives.

Characteristics

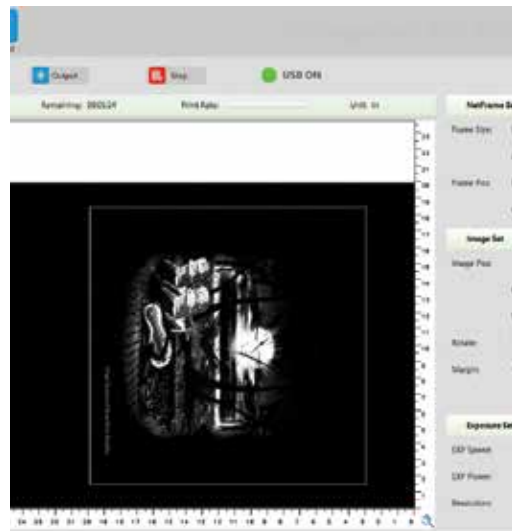
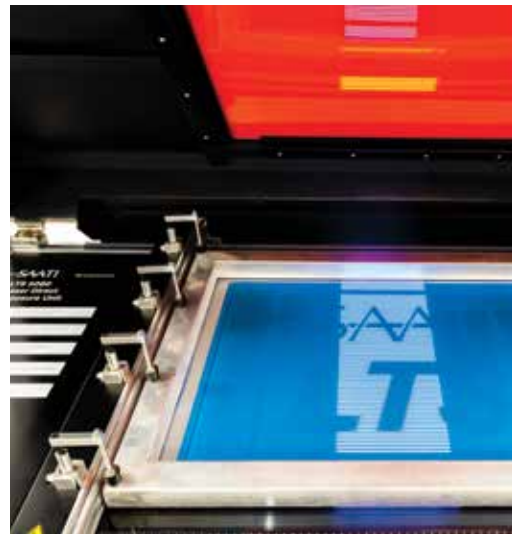
- Facedown glass panel with enclosing lid
- 96 laser array capable of 2540, 1693, 1270, 1016, or 847 DPI
- Exposes all emulsions and stencil films
- Easy to use software, compatible with many RIP programs
- Utilizes 1-bit TIFF file format

Features/Benefits

- Very high resolution CtS exposure capable of reproducing the most demanding image types
- Digitally process all types of PC & Mac design files in house with no film positives
- No consumables and low power consumption for minimized costs
- 10,000+ hour lamp life and easy, low cost maintenance

Specifications

- Maximum Image Size: 60x80 cm
- Overall Dimensions: 142 x 71 x 91 cm
- Weight: 400 kg.
- Compatible with 110V or 220V input
- One Year Warranty
- CE Approved



SAATI ProLite 450 Exposure Lamp

Efficient Targeted Wavelength LED Exposure



Description

450W 405nm LED exposure lamp

Application

Designed to efficiently expose screen printing stencils

Characteristics

- High intensity with even illumination
- Instant start to full power
- 10,000 hour lifetime rated
- Works with all one & two part emulsions, and stencil films
- Efficient low cost replacement for expensive metal halide systems

Features/Benefits

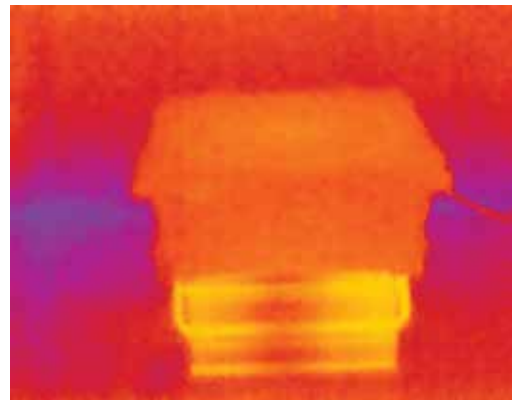
- Optimum wavelength for fast exposure, deep cure & wide latitude
- Runs cold, glass stays cool and no extra a/c load
- Constant light output, no photocell/filter/light integrator calibration needed, just a simple timer
- 85V-265V rated and works with any 110V outlet

Recommended Usage

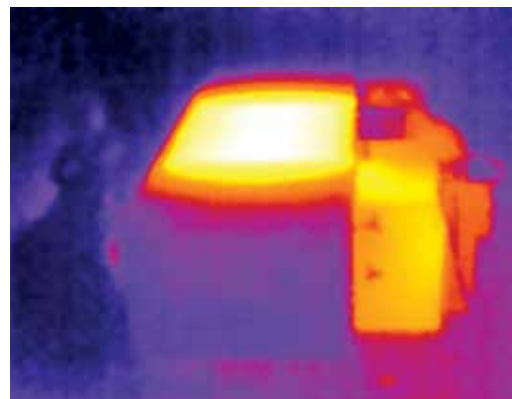
- Use at a minimum of 60 cm distance for even exposure of one 58,5x79 or 63,5x91,5 cm screen.
- Use at a minimum of 91,5" distance for even exposure of two-up 58,5x79 or 63,5x91,5 cm screens.

Specifications

- Dimensions: 35,5x18x7,5 cm
- Weighs 4,5 kg
- Uses 110v standard wall outlet



Low heat output of SAATI ProLite 450 LED Lamp



High heat output of traditional Metal Halide Lamp



ProLite 450 as a low cost replacement for old MH Bulb

Quality Control Devices

Maximize Efficiency by Improving the Quality of Your Stencils

When you measure quality at every stage of screen production and on press, you take control of the many variables in screen-making and printing. Most importantly, you have the means to the consistency and repeatability that will boost your screen-printing productivity and profitability. SAATI brings you the most comprehensive selection of highly accurate, yet easy-to-use instruments to monitor and confirm screen quality at each step.

As specialists in screen-making products and innovators in QC devices, we've made sure that these instruments are practical, affordably priced, durable enough for continuous use and simple to operate.

NEWMAN ST-METER® 1-E

A uniquely constructed, heavy-duty mechanical tension meter that assures durability and long-term accuracy in monitoring screen tension. It is the only meter in the world with all stainless steel hardened gears, shock-proof industrial grade internal gear movement and all jeweled sapphire bearings. A screen tension meter of exceptional quality, it will last longer and produce consistent readings every time. (All other mechanical meters have non-compound softer brass gears and bushing, greatly reducing their shock-resistance, long-term accuracy and life.) The crystal is shatterproof and curved to avoid glare. The heavy-duty protective aluminum housing is the most durable meter made anywhere. The modular construction assures easy and inexpensive repairs, if necessary.



AQUA CHECK

The only stencil moisture meter, the TQM Aqua-Check determines when the stencil is dry enough to expose. Our exclusive TQM Aqua-Check meter detects hidden moisture instantly. It is a fast and accurate measurement that prevents you from taking chances with your stencil. The battery-operated contact meter provides direct readings of the residual moisture content in coated (and dried) screens to ultimately prevent pinholes and premature stencil breakdown. If a screen is not dried thoroughly before exposure, it will not harden effectively, and is therefore vulnerable to these deficiencies. The Aqua-Check's modest cost can save you big outlays in press downtime and stencil remakes. For use on polyester and nylon screen mesh. There is no guesswork. Simply hold it against the emulsion or film surface and press the "READ" button for 2 seconds. Look at the dial. Red for trouble ahead. Orange for risky. Green for go!



TQM™ ELECTRONIC THICKNESS GAUGE®

TQM Electronic Thickness Gauge (ETG) is the only thickness gauge that calculates the difference between the fabric and emulsion thicknesses automatically. It is the choice for the screen printer looking for a practical, compact and easy-to-use thickness gauge for quality control purposes. Its uses include screen mesh and stencil measurements, as well as substrate and cured ink film measurements. The ETG works on the principle of magnetic induction, and is used in conjunction with a small, hand-held test plate. The coated mesh sample is placed between the measuring probe and the test plate. The micron or mil measurement is displayed immediately. The TQM ETG unit does not normally require calibration before use. However, the unit is supplied with calibration shims to confirm instrument accuracy or to measure unusually thick or curved samples. For those requiring conformance to very tight quality controls, the TQM ETG can be ordered with an optional Certificate of Calibration to NIST standards.

FEATURES

- Digital accuracy of $\pm 1\%$
- Also measures dry ink thickness on substrate
- For use on polyester, nylon or stainless steel mesh
- Measures automatically in mils or microns
- Factory-installed, custom-fit probe system means all models are calibrated and shipped ready-to-use
- Automatic shut-off after 7 minutes of non-use
- Automatic low battery shut-off eliminates invalid readings
- Heavy-duty carrying case

POCKET SURF III ROUGHNESS METER

The Pocket Surf III Surface Meter is a pocket-sized, battery-operated roughness gauge for measuring stencil and substrate surface roughness parameters in Ra, Rmax and Rz with digital readout. The Pocket Surf III is solidly built with a durable cast aluminum housing for years of accurate surface measurements. Its digital display is conveniently located on top of the device for optimum visibility.

FEATURES

- General purpose probe with a 10 micron radius
- Offers three traverse lengths
- Supplied with a certified reference specimen, riser plate battery and custom-fitted protective case
- Easy-to-read LCD display presents the measured roughness values in microinches or micrometers
- Out-of-range (high/low) and battery low warning signals
- Serial output for Statistical Process Control (SPC)
-

BENEFITS

- Save time with no more guess-work
- Very simple to use
- Provides an automatic calculation of the difference between the fabric and emulsion thicknesses

OPTIONS

- Certificate of Calibration to NIST standards for quality control or ISO 9000 compliance programs
- Bi-yearly calibration program, based on instrument inspection
- Spare parts available: ETG base plates and ETG calibration foils



BENEFITS

- Economically priced
- Fast and accurate; measurement produced within a half second of traversing the surface
- Provides a measurable indicator of how efficiently the print side of the stencil controls edge definition
- An acceptable Rz value assures proper gasketing of the stencil to the substrate, and controls the ink flow

OPTIONS

- Power transformer to replace battery operation



Quality Control Devices

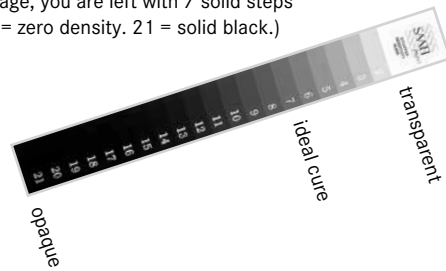
Maximize Efficiency by Improving the Quality of Your Stencils

SAATI 21-STEP SENSITIVITY GUIDE

This is the exposure guide of choice for accuracy, ease of use and all-purpose application. With the SAATI guide, there is no guesswork or complicated interpretation. It is a more precise tool than the gelatin/density type exposure calculators, and unlike competitive products, it can be used on all stencil types and all mesh counts (other exposure guides are not compatible with pure photopolymer stencils, and do not perform as well on coarse mesh). Our 21-step guide is also much smaller (1/2" x 5 1/4"), so it can be used on all production screens. The SAATI Sensitivity Guide is a film containing a transmission type density scale with 21 steps ranging from transparent to opaque.

DIRECTIONS

Place the SAATI 21-Step Sensitivity Guide on the screen. Optimize your exposure so that when washing out the image, you are left with 7 solid steps (1 = zero density. 21 = solid black.)



10 Seconds
Step 4
underexposed
Rx: 2.8x (28s)



60 Seconds
Step 9
overexposed
Rx: 0.5x (30s)

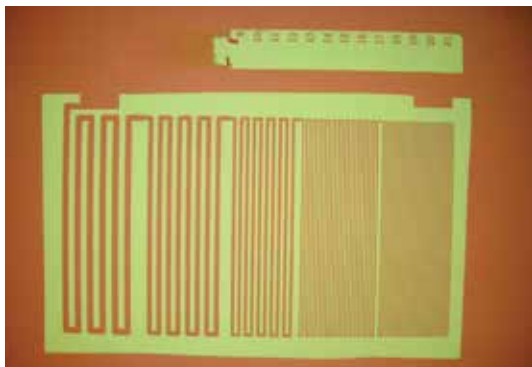


30 Seconds
Step 7
Perfect Cure



| To increase exposure by | Multiply exposure by |
|-------------------------|----------------------|
| 1 step | 1.4x |
| 2 steps | 2.0x |
| 3 steps | 2.8x |
| 4 steps | 4.0x |

| To decrease exposure by | Multiply exposure by |
|-------------------------|----------------------|
| 1 step | 0.70x |
| 2 steps | 0.50x |
| 3 steps | 0.33x |
| 4 steps | 0.25x |



ADVANCED USES

When you record the correct exposure times for each of your products at different coating thicknesses, you will have a valuable tool that will save your time, product and money.

If you expose several stencils for the same amount of time but find some overexposed or details falling out, this can suggest an inconsistencies with your coating thicknesses.

You may find that a different step result produces better prints for a particular product you are using. The 21 step guide is useful in that you can determine the optimum result taking into account different cure levels.

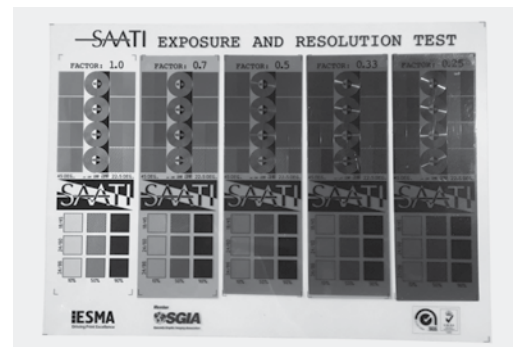
You can pick any value on the step guide, but for most products, 7 steps is the preferred cure level.

SAATI EXPOSURE CALCULATOR

Optically clear litho positive film for determining the correct exposure time for any particular type of photostencil emulsions or capillary films.

It contains five identical columns of fine detail graphics. Four of these are covered with a neutral density filter with a different light transmission value, in order to obtain five different exposure times from one single exposure process.

With this all-in-one film, it is very easy to identify the correct exposure time for future stencil production and it substitutes the traditional, time consuming step wedge exposure process.



ANGLE DETERMINER

The ISPS Thread Direction/Mesh Angle Gauge is a quick and easy way to reference the mesh angle on any screen, eliminating the guesswork caused by unmarked screens especially in 4-color process printing. In addition, the gauge is very helpful in diagnosing moiré issues caused by screens or films.

Can be used on coated and uncoated screens, as well as film

DIRECTIONS

Use gauge by laying it directly on the screen or film. A moiré pattern appears on the tool at the angle it sees.



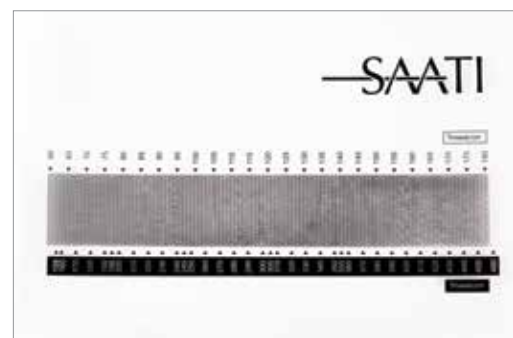
MESH COUNTER

SAATI's Mesh Count Determiner is a fast and easy way to verify your mesh count. It can be used on stretched and unstretched fabric, with or without a stencil.

You can accurately count the number of threads per cm within +/-1 in mesh counts ranging from 60-180.

BENEFITS

- Save down time by eliminating mismarked frames in your inventory
- Confirm incoming frames from outside vendors
- Reduce moire by matching frames of similar thread count
- Can also be used on halftone films to determine if the LPcm is correct



Quality Control Devices

Maximize Efficiency by Improving the Quality of Your Stencils

VIVIDIA PORTABLE DIGITAL HANDHELD MICROSCOPE

The Vividia 3R-500UV Portable Handheld Digital Microscope has 3.5" LCD screen, up to 200x magnification, both white and UV LED lights, and 5MP sensors. Images and videos are saved on SD cards, and the microscope can be used on a PC through USB cable connection and included software. Vividia 3R-500UV are widely used in printing, forensic science, education, medical, manufacturing, electronics, hobby etc.

FEATURES

- Small, light, and portable
- High definition images, 5MP and clear images
- Magnification from 10x to 200x.
With digital zoom to ~800x
- Switchable white LED lights and UV LED lights
- Simple scale can be showed on LCD screen to assist measurement
- Can be used on PC with USB connection and included measurement application software
- Take photos and record videos and stored on SD card

PRODUCT DETAILS

- Dimension: 117mm(L) x 75mm(W) x 67mm(H) - 4.6 x 2.9 x 2.6"
- Weight: 170g (5.75 oz) without SD Card
- Battery: Rechargeable 1800mAH lithium-ion battery
- Power Supply: DC 5V/1A ± 10%
- Battery Capacity: Approx. 4 hours for continuous working with 500 cycles

TECHNICAL DETAILS

- Camera Type: 1/3 " color CMOS Sensor Digital Camera
- Image Resolution: 640(W x480(H), 1280x960, 1600x1200, 2048X1536, or 2560x1920(5MP)
- Image Quality: Highest Definition
- Image Format: JPEG
- Video Format: AVI with VGA or QVGA resolution
- Illumination: 4 white LED+4 UV LED with adjustable luminance and switchable
- Lens: 200x Zoom microscopy lens with High Definition
- Magnification: 10x-200x
- Digital Zoom: Continuous 4x (Max total magnification 800X)
- Aperture: Auto
- Sensitivity: Approximately equivalent to ISO 100, 200, 400
- LCD Monitor: 3.5" TFT LCD with 76800-dot(320x240)
- SD Card Support: Up to 32G
- Camera Functions: Shutter Snapshot, Video recording, Image and Video displaying
- Extending Shutter: Support extending shutter/ Video recording/LED exchanging
- Focus Range: 0-60mm
- PC connection: USB 1.1/2.0

INCLUDED

- Microscope, Wired controller, Lens cover (2 pieces) & Spacer (2 pieces), USB charging cable, mini USB cable, AC/USB charging adapter, Strap, Simple scale, Software CD, SDHC card 4GB, Cleaning cloth, Instruction manual



Up to 800x Zoom



Screen Making Accessories

High Quality Accessories for Your Screen Making Cycle

BRUSHES FOR ADHESIVES

High quality natural bristle brushes designed for the application of viscous two-part polyurethane adhesives to adhere mesh to all frame types during stretching.



SCREEN PREPARATION BRUSHES

- 100% chemically resistant
- Stiff nylon bristles
- Perfect for spreading degreasers, decoaters and haze removers



LARGE SCREEN BRUSHES

- 100% chemically resistant
- Blue handle brush has medium stiffness bristles
- Green handle brush has very soft spliced bristles
- Perfect for spreading degreasers, decoaters and haze removers on larger screens



BRUSH PADS

100% chemically resistant synthetic screen cleaning pads with an ergonomic handle that makes them convenient for applying degreasers, decoaters and haze removers to large screens.



Duralife Squeegee

Precision Cut Edge Squeegee

Cut-Edge Squeegees

Duralife's precision cut-edge offers the optimal sharp edge yielding the finest in print definition. Unlike rotary cut edges that leave a serrated pattern on the edge; our one-stroke cut leaves a perfect print edge.

CE Series

- Premium cut edge
- Close tolerance on hardness range
- Good all around performance
- Available in all sizes

The triple-duro blade offers two print edges by sandwiching a harder 90 duro center within the desired print durometer on each side controlling and minimizing the degree of squeegee flex. This reduced flex yields better print definition and better control of ink deposit by maintaining an effective print angle. The harder center also resists solvent attack over a single durometer blade thus maintaining rigidity throughout the production run.

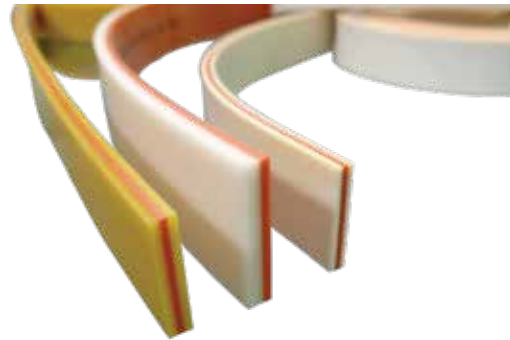
The triple-duro squeegee is especially suited for use on higher tension screens in small to medium formats requiring a more stable and rigid squeegee blade and also on automatic presses to maintain the critical print angle across the entire width in large format printing.

In addition, with the squeegee pressure focused on the print edge, less overall pressure is needed reducing abrasion and solvent attack to the squeegee and preventing premature stencil breakdown.

CE HP

Duralife CE HP has been developed to decrease static related printing problems, such as whiskering and dust attraction. Its special formulation helps reducing the squeegee sensitivity to electronic charges.

- Low swelling
- High abrasion resistance
- Reduced electrical charge
- Solvent resistance
- Antistatic



Molded Edge Squeegees

The individual cavity molds of Duralife ME Squeegee assure consistent and uniform blade thickness, dimensions and hardness. Duralife's molded blade maintains its print edge and resists nicking, especially our V-shape (double beveled). Unlike some cut "Vs" that can be irregular, our 60-degree angle is always precise and consistent.

ME SERIES

- Premium molded edge
- UV and abrasion resistant
- Extended press life
- Resists nicking
- Sealed walls resist solvent attack
- Custom sizes available

SINGLE/DUAL

Individual cavity molds assure consistent and uniform blade thickness, dimensions and hardness.

Duralife's molded blade maintains its print edge and resists nicking.

Duralife DUAL DURO reduces flexing and maintains a more consistent squeegee angle. Print with less pressure for longer stencil life.



SAATI Pro Wash Out Booth

Designed for manual cleaning and decoating of screen printing stencils after print.

Characteristics

- Chemical Resistant
- Screen Holder
- Skewed top edge enables flow of the cleaning fluid into the washout booth by using bigger stencils.
- Higher and round front edge is safer for use and protects the flashing of the cleaning fluid from the box

Optional Accessories

- Stainless steel stand with plastic legs
- 50L or 100L barrel
- Pump OC-MS/RENNER
- Tube and brush
- Slip resistant grate and plastic tray

Standard Sizing Options

- UB90 92 X 70 X 39,5 CM
- UB125 127 X 120 X 54,5 CM
- UB165 167 X 135 X 54,5 CM
- UB ON REQUEST



SAATI Dip Tank & Sedimentation Drum

Designed for stencil decoating and pre-development of exposed stencil.

Dip Tank

Tank and lid made of chemical and impact resistant PPH. Stainless steel made stabilisation frame. Optional with air injection for air bubble formation and mechanical stepping up of the development or decoating process.

Standard external dimension: Width 725 mm, Depth 400 mm, Height 665 mm Max content: approx. 150 liters. Further sizes on request.



Sedimentation Drum

Available sizes: 200 L, 100 L, 50 L. Recycling of ink contaminated REMCO Variowash and Varioclean S screen cleaner with addition of 1-2% of Varioplus 4095 Sedimentation Additive. After overnight of weekend sedimentation, the purified solvent phase can be drained through the first faucet of the sedimentation drum and re-used after blending 1:1 with fresh Variowash or Varioclean S cleaner.

After this, the pigment sludge (approx. 20% by volume) can be drained through the second faucet at the bottom of the sedimentation drum.





SAATI Reclaim Chemistry

World Class Chemicals for Each Step of Screen Cleaning

SAATI offers a complete package of chemical products for screen cataloguing, reclaiming, or recycling. High performance chemicals minimize usage levels while quickly delivering screens that look and perform like new. Tailored products optimize results for cleaning every type of ink and recommended product packages ensure top performance at each stage of the reclaiming process. Screens are recycled with minimal impact to the fabric as well as the environment. Biodegradable ingredients from renewable resources such as palm, corn and soy are heavily used to minimize reliance on components derived from fossil fuels.



Press Washes

For Print Maintenance and Color Changes at Press.

Remove PW7

Removes inks from stencils after and during screen printing. Safe in use, EEC label free.

- Fast evaporation and limited odor
- Designed for cleaning and removing inks in textile and graphic printing.
- It works very well during color change phase and, in general, to clean stencils during printing and before storing.
- To be used to remove glues from printing pallets.



Ink Removers

Ink degradents are used to remove ink from screens prior to reclaiming. Water rinseable and drain safe.

Remove IR 15DK

Recommended to Clean Solvent-Based, UV-Cured & Textile Inks

- For manual or automatic cleaning
- High efficiency formula reduces product consumption
- Universal performance reduces the need for multiple ink removers
- Can be re-applied after stencil removal to remove ghost images

Remove IR 18

Low Foam Universal Ink Degradent for Automatic Cleaning

- Low foam and low odor and suitable for manual and automatic cleaning
- Can be reapplied to remove ink stains
- Can be mixed with Remove ER6 and used as one-step ink and stencil remover





Emulsion Removers

To Remove Diazo, Dual-Cure and Photopolymer Emulsions and Films.

Remove ER2

Highly Concentrated, Easy-to-Dissolve Liquid with Built-In Degreaser

- Powerful built-in degreaser cuts through the oily residue left during ink removal to speed stencil breakdown and to aid in mesh degreasing
- Mix 1 part with 25 parts water by weight (1 to 35 by volume)

Remove ER6

Remover of all stencil types

- Fast-acting, effective and economical
- Works in minutes
- Odour-free and biodegradable
- To be mixed with Remove IR 18 for “all in one” cleaning/decoating process

Remove ER13

Super Highly Concentrated Remover of all stencil types

- Fast-acting, effective and economical
- Works in minutes
- By volume, dissolve one part Remove ER13 in 60 parts water

SAATI Reclaim Chemistry

World Class Chemicals for Each Step of Screen Cleaning

Haze Removers

To Remove Stains From Mesh After Emulsion Has Been Removed.

Remove HR3

Fast-Acting Haze Remover Paste

- Provides the highest strength cleaning power
- Effectively works in minutes!

Remove HR8

Fast-Acting Haze Remover Paste

- One part, ready-to-use (cream)
- Let sit on screen for a few minutes
- Application with coating through



Notes

An abstract graphic design featuring a white background with several thin, intersecting lines in various colors: red, purple, orange, green, blue, and light green. The lines cross at various points, creating a network of geometric shapes. The text "We cross-innovate" is written in a bold, dark blue, sans-serif font, positioned in the upper-left quadrant of the image. The overall aesthetic is clean, modern, and minimalist, emphasizing the concept of cross-innovation through the visual metaphor of intersecting paths.

We cross-innovate

**SAATI S.p.a**

Via Milano, 14
22070 Appiano Gentile (Co), Italy
Tel : +39 0319711
Fax: +39 031 933392
E-mail: info.it@saati.com

SAATI Americas Corp.

201 Fairview St. Extension
Fountain Inn, SC 29644
Toll-Free: +1 800 431 2200
Fax: +1 864 862 0089
E-mail: info.us@saati.com

SAATI Technical Fabrics (Tianjin) Co., Ltd.

Cross Of Saida 2nd Branch Road and Saida Century Avenue,
Xiqing Economic Development Area,
Tianjin, China 300385
Tel: +86 22 23960843
Fax: +86 22 23962116
E-mail: info.cn@saati.com

SAATI Deutschland GmbH

Ostring 22 46348 Raesfeld, Germany
Phone: +49 2865 95800
Fax: +49 2865 958010
E-mail: info.de@saati.com

SAATI Korea Ltd.

22, Dangjeong-ro, Gunpo-si Gyeonggi-do, 435-833, Korea
Phone: +82 31 429 9337
Fax: +82 31 429 9338

SAATI France

74 Route de Bapaume 80360 Saily Saillisel, France
Phone: +33 3 22 85 77 00
Fax: +33 3 22 85 77 00
E-mail: info.fr@saati.com

SAATI Serigrafía Ibérica, S.a.

Pol. Ind. El Mijares, C/ Industria, nº 13 12550
Almazora, Castellón, Spain
Phone: +34 964550688
Fax: +34 964551049
E-mail: info.es@saati.com

SAATI Russia

23 Shvetsova str. 198095 Saint-Petersburg, Russia
Phone: +79 062788343

Website

www.SAATI.com

—SAATI
We cross-innovate