

# Stencil Exposure Systems

## SAATI LTS Series

High Resolution Digital Direct Laser Image & Exposure Units

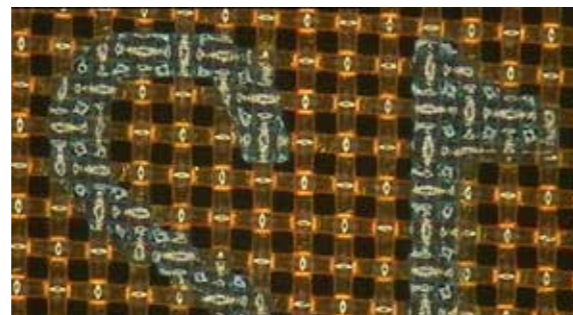
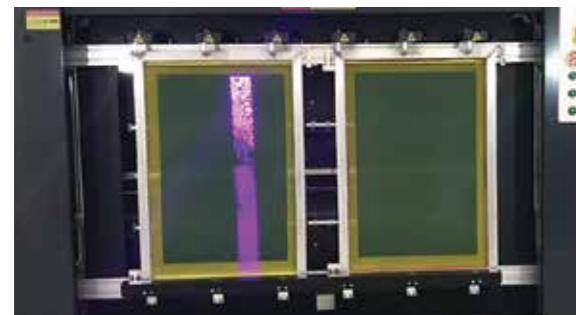
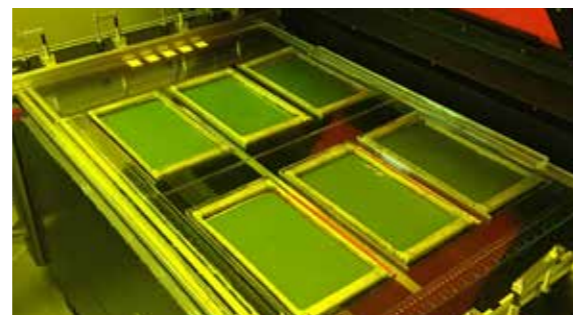
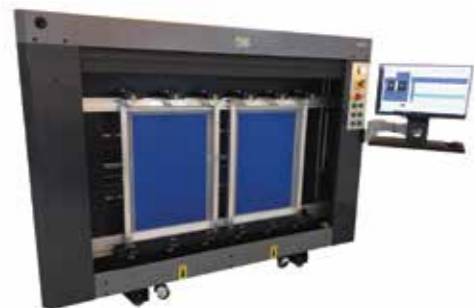
SAATI is pleased to introduce you to the state of the art in computer-to-screen stencil making - the SAATI LTS Series.

SAATI LTS machines use laser diodes to directly image and expose stencils simultaneously. The 405 nm laser array is the correct wavelength for optimal through-cure so that stencils are processed rapidly, at high resolution (up to 2,540 dpi) and with no consumables like ink, wax or film, while drawing much less power than non-targeted wavelength light sources.

The included workflow software allows stencil makers process art files in-house, and to place

one or more images on one or more stencils at the same time, further enhancing productivity and planning. In addition, remote viewing capabilities allow SAATI technicians to assist printers in calibrations without the need for face to face meetings in the pandemic age.

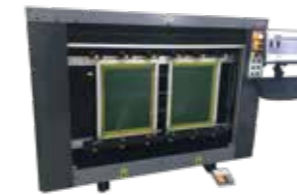
The affordable price point compared to other computer to screen technologies opens up higher resolution and more efficient computer-to-screen stencil making to a much broader group of screen printers, so the end result should be to enable access to higher quality and productivity, with a reduced carbon footprint.



## SAATI LTS Range



LTS 6080



LTS 6080-VF



LTS 8012



LTS 1015

43.3x33.5"

multi-frame setups

25x36  
x1

23x31

20x24

LTS 6080  
for small to medium format screens  
1 or more screens horizontal glass down

66x41"

25x36  
x1

23x31  
x1 or x2

20x24  
x1 or x2

LTS 6080VF  
for medium format screens  
1 or 2 up vertical glass free

66x45"

25x36  
x1 or x2

23x31  
x1 or x2

20x24  
x1 or x2

LTS 8012  
for medium format screens  
1 or 2 up vertical

79x55"

25x36  
x1 or x2

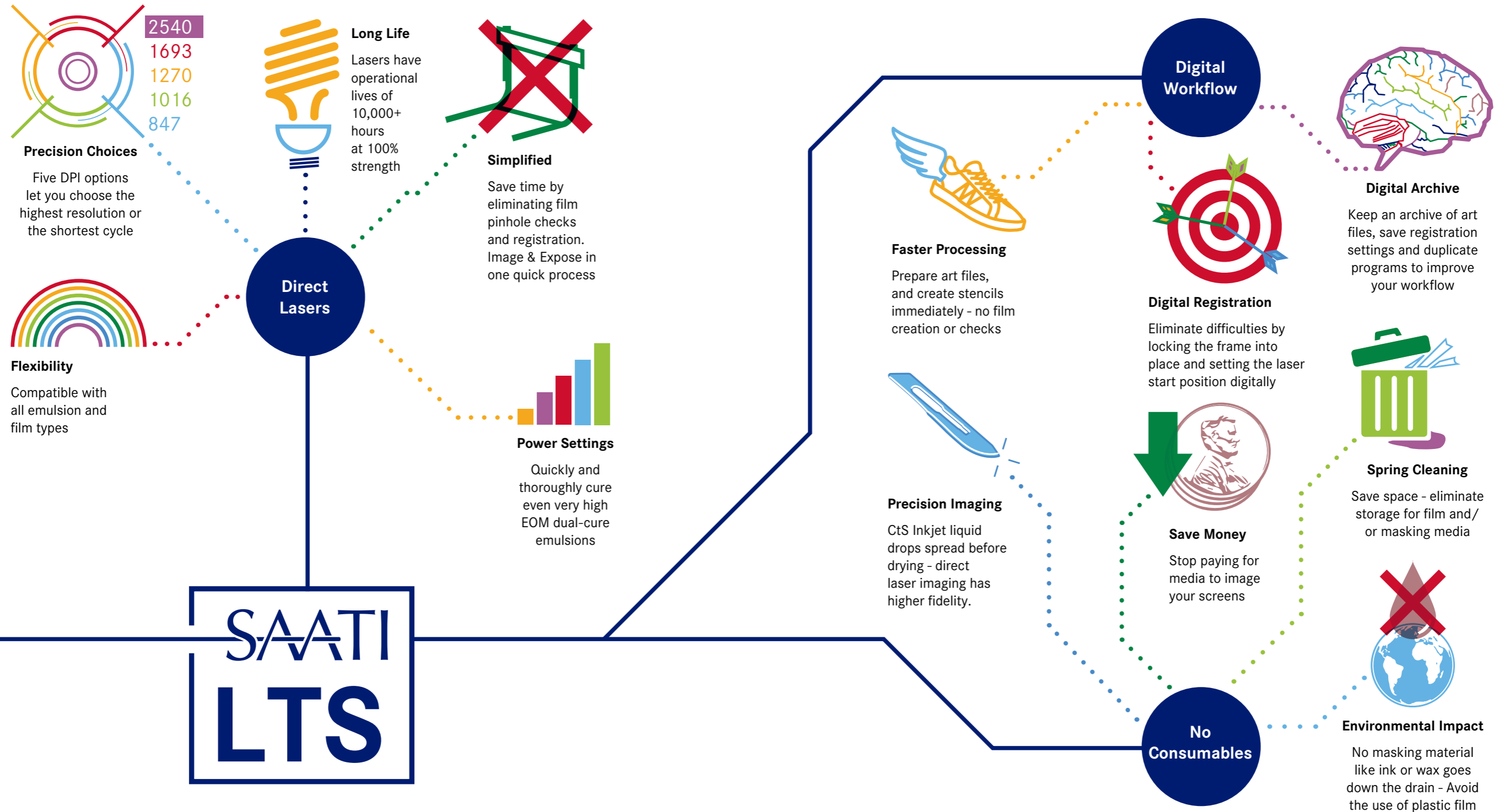
23x31  
x1 or x2

20x24  
x1 or x2

LTS 1015  
for larger and medium format screens  
1 or 2 up vertical

# SAATI LTS Series

High Resolution Digital Direct Laser Image & Exposure Units



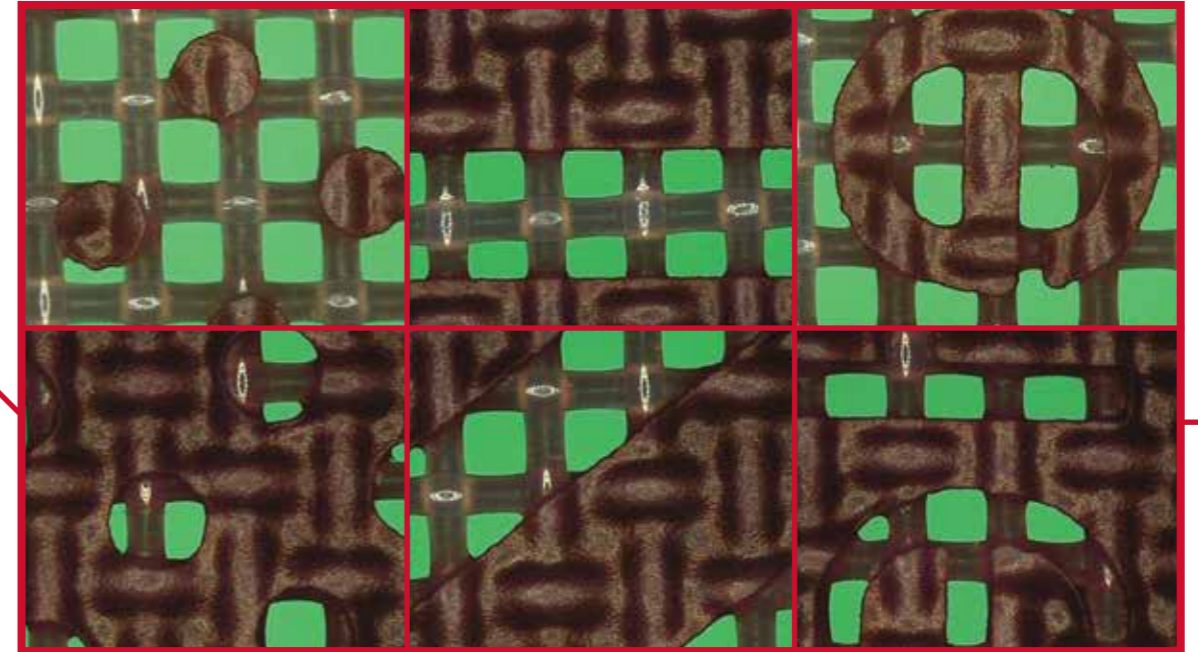
# SAATI LTS Series

High Resolution Digital Direct Laser Image & Exposure Units

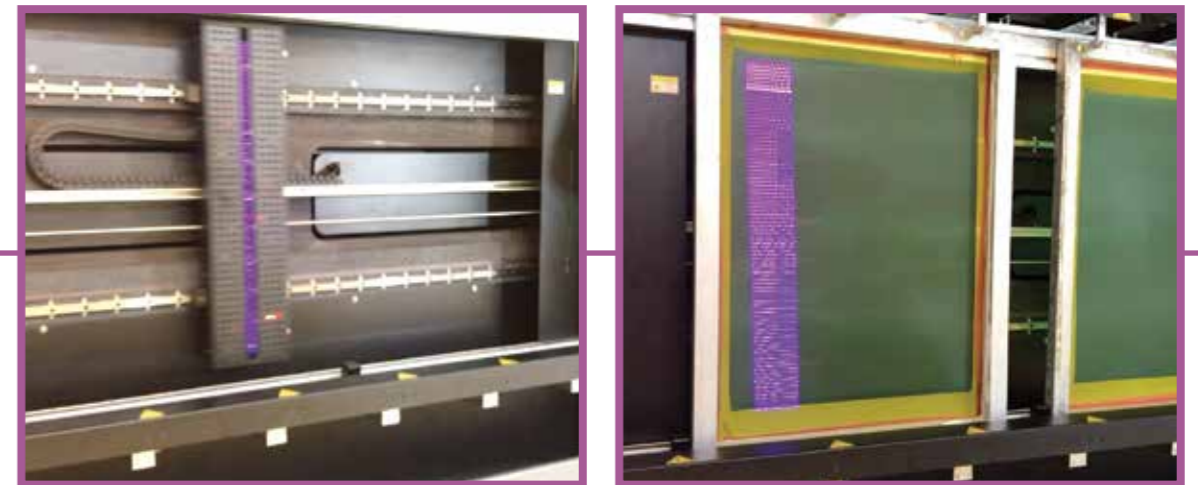
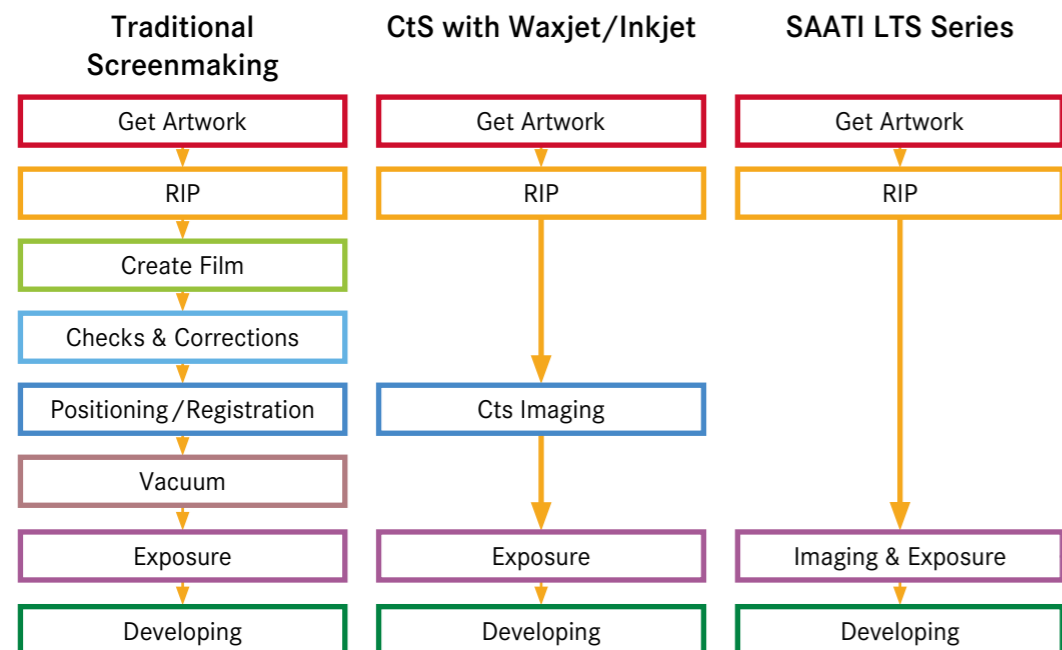
## Resolution Settings

The SAATI LTS has five resolution resolution settings, each tailored to a different types of image requirements

- |  |   |   |   |   |
|--|---|---|---|---|
| <p><b>847</b><br/>Low Setting</p> <ul style="list-style-type: none"> <li>• Fastest processing times</li> <li>• Superior to inkjet films</li> </ul> | <p><b>1016</b></p> <ul style="list-style-type: none"> <li>• Superior to inkjet/waxjet resolution</li> </ul> | <p><b>1270</b><br/>Middle Setting</p> <ul style="list-style-type: none"> <li>• Equivalent to DLE systems</li> </ul> | <p><b>1693</b></p> <ul style="list-style-type: none"> <li>• Superior to many other DLE systems</li> </ul> | <p><b>2540</b><br/>Highest Setting</p> <ul style="list-style-type: none"> <li>• Image setter quality for the most demanding applications</li> </ul> |
|--|---|---|---|---|



## Improvements to Workflow





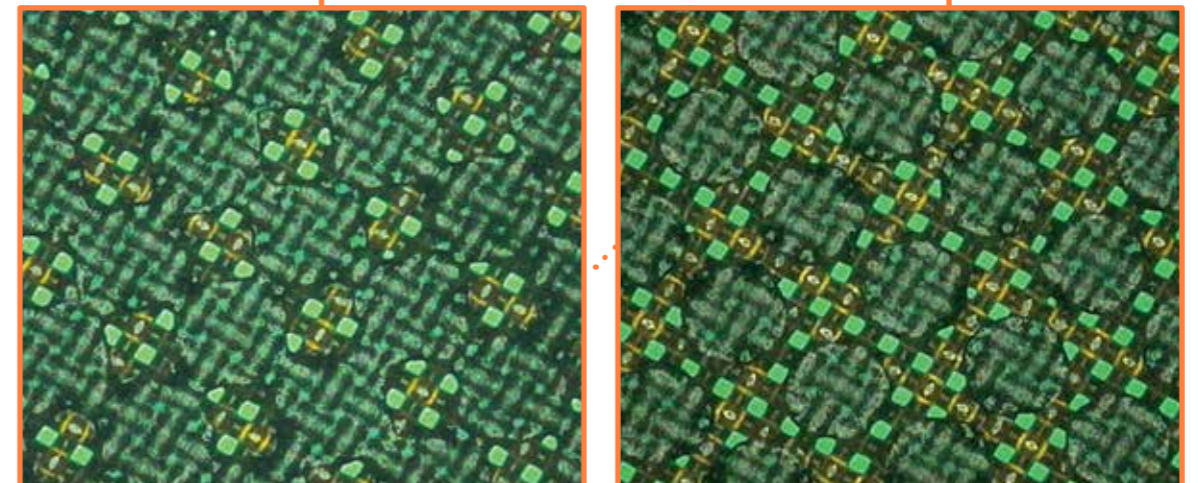
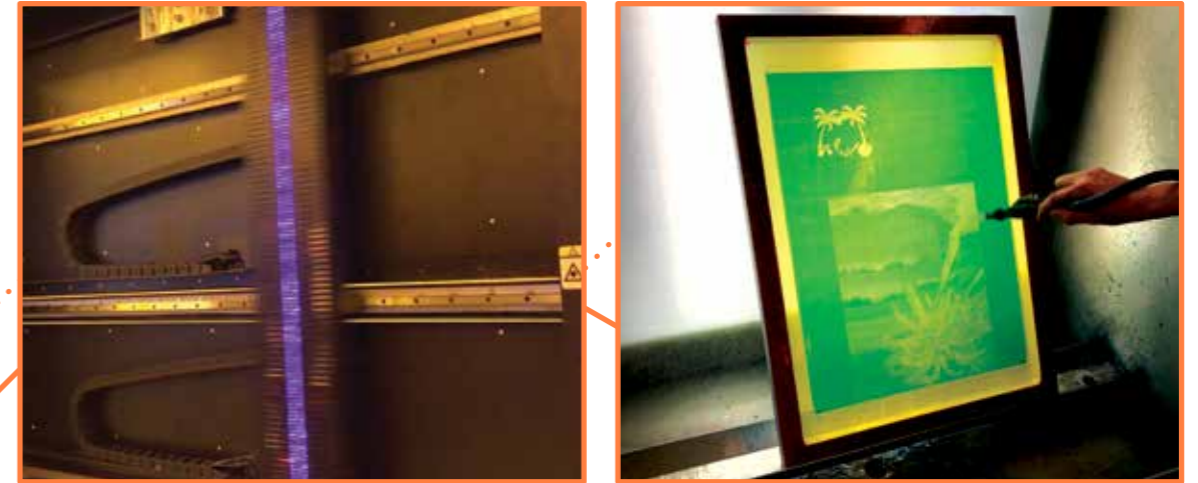
# SAATI LTS Series

High Resolution Digital Direct Laser Image & Exposure Units

Laser array exposes images much more quickly than scrolling chip DLE or ink/waxjet that require subsequent exposure



Precision placement of multiple art files across two screens



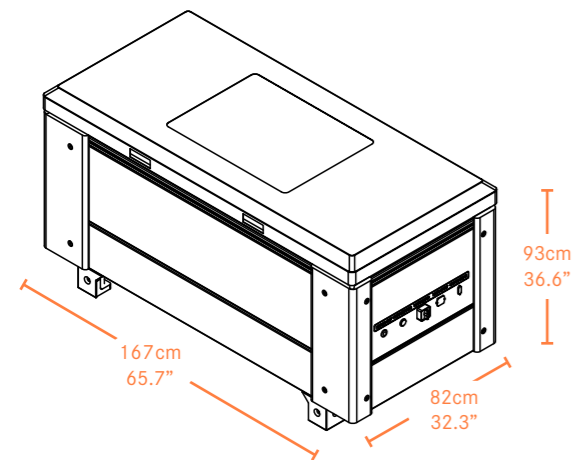
120 LPI 40% dot on 380.31 YE

120 LPI 60% dot on 380.31 YE

# SAATI LTS 6080

High Resolution Digital Direct Laser Image & Exposure Unit

## Dimensions

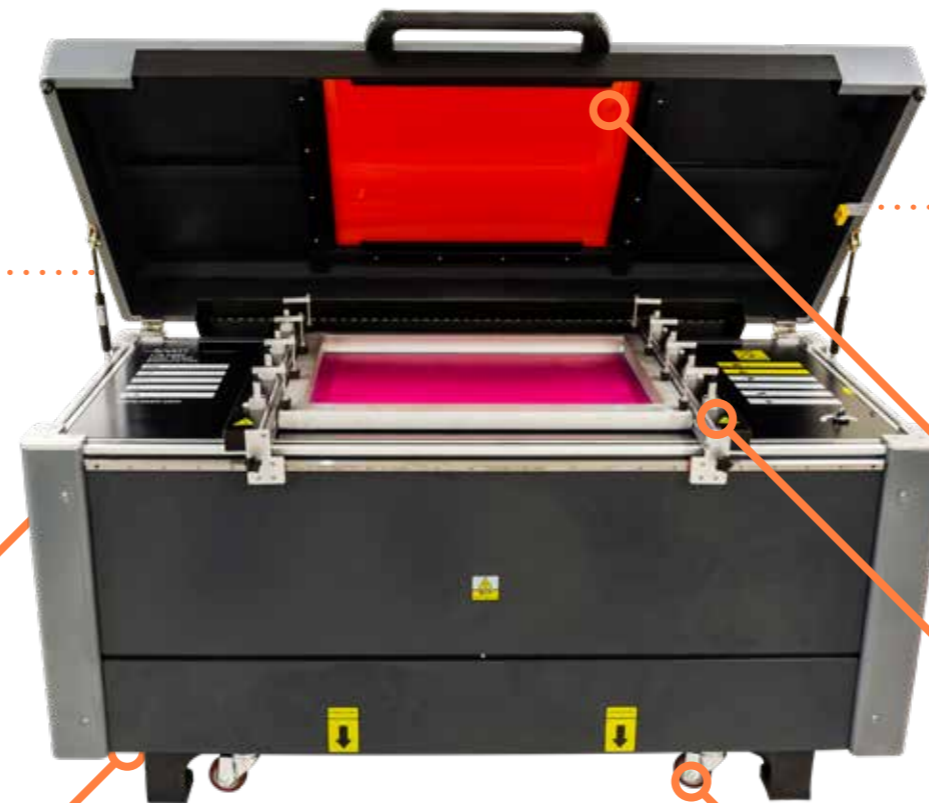


## Characteristics

Facedown glass panel with enclosing lid

**Maximum Single Frame Size:**  
85 x 110 cm | 33.5 x 43.3"

Solid metal construction provides a vibration free stencil making platform



## Lasers

96

## Weight

597 kg  
1316 lbs

## Power



110V  
standard

240V  
with adapter

350W  
consumption

Safe Viewing Window for observing exposure program progress

Adaptable to various types of screen registration systems

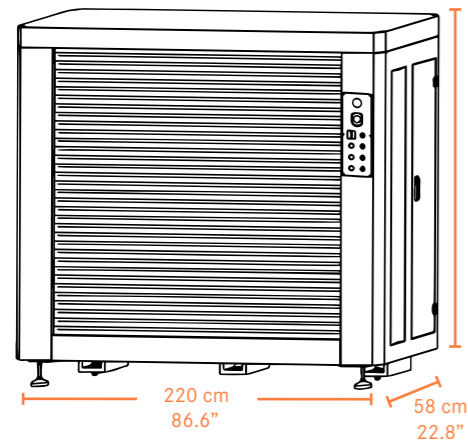
**Maximum Single Image Size:**  
60 x 80 cm | 23.6 x 31.5"

Solid casters and slim build allow easy movement through standard doorways for unit placement

# SAATI LTS 6080-VF

High Resolution Digital Direct Laser Image & Exposure Unit

## Dimensions



## Characteristics

Glass-free vertical loading and frame lock system ensure accurate, easy screen placement and reduced pinholes

Solid metal construction provides a vibration free stencil making platform while maintaining a smaller footprint than other CtS machines

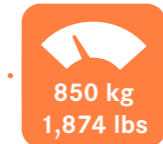
Easy to use pedals engage and disengage the frame clamps



**Lasers**

**96**

**Weight**



**Power**



**110V**  
standard

**240V**  
with adapter

**800W**  
consumption

Touch screen workflow

Motorized safety shutter

Large frame holding area enables simultaneous imaging & exposure of either large screens, or 1 or 2 standard size screens

**Maximum Image Size:** 60x120 cm | 23.6 x 47.2"

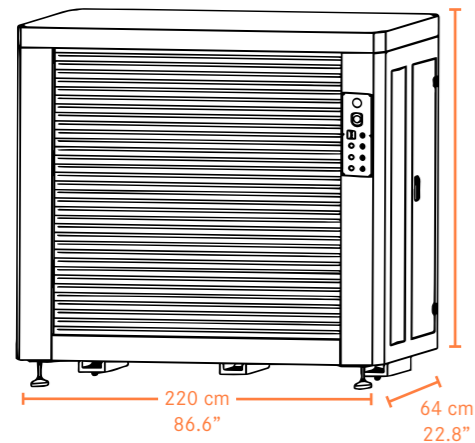
**Max Frame Sizes:** 1 Screen up to 104 x 167 cm | 41 x 66"  
or 2 Screens up to 58 x 78 cm | 23 x 31"



# SAATI LTS 8012

High Resolution Digital Direct Laser Image & Exposure Unit

## Dimensions

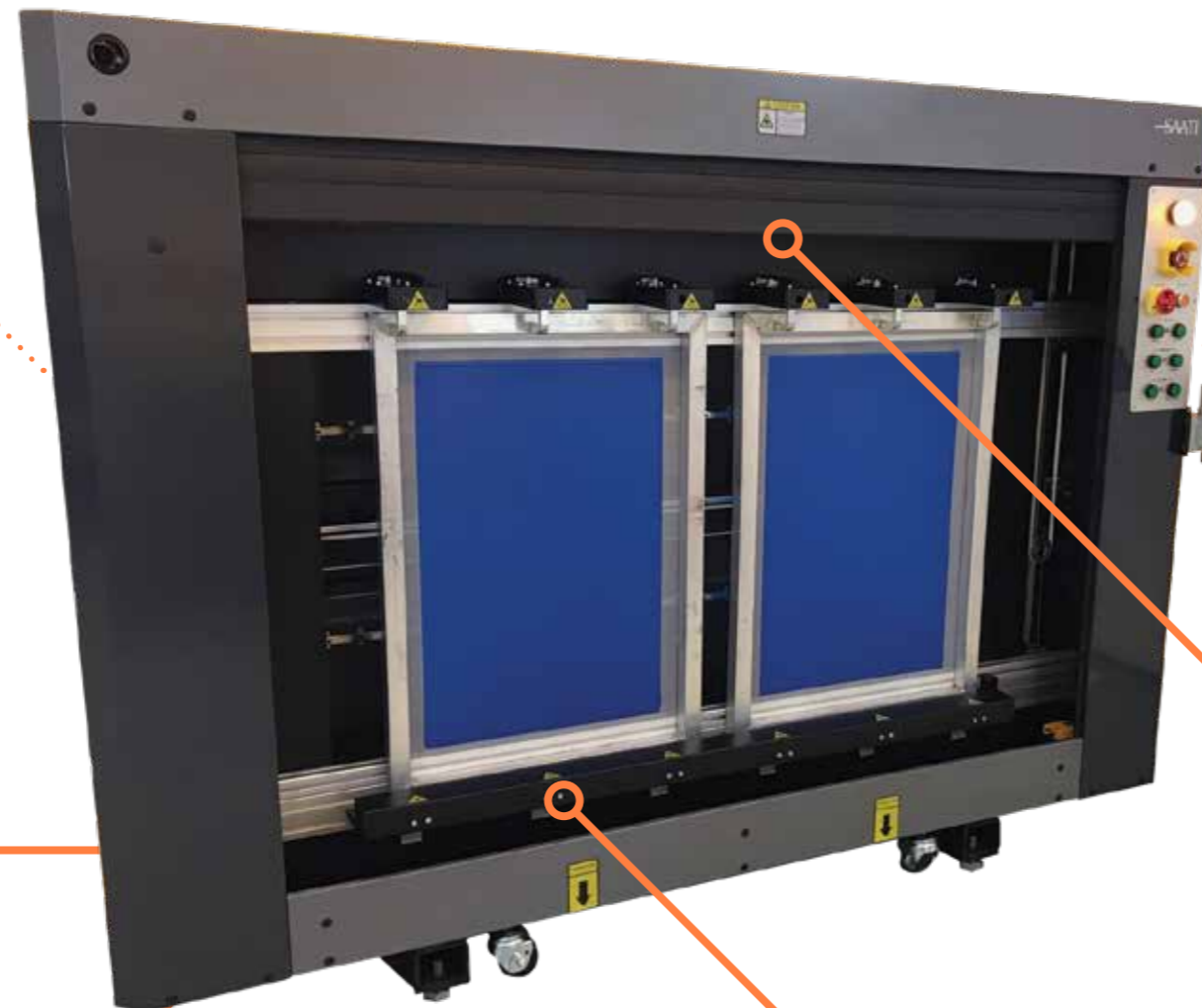


## Characteristics

Glass-free vertical loading and frame lock system ensure accurate, easy screen placement and reduced pinholes

Solid metal construction provides a vibration free stencil making platform while maintaining a smaller footprint than other CtS machines

Easy to use pedals engage and disengage the frame clamps



Lasers

128

Weight



Power



110V  
standard

240V  
with adapter

800W  
consumption

Touch screen workflow

Motorized safety shutter

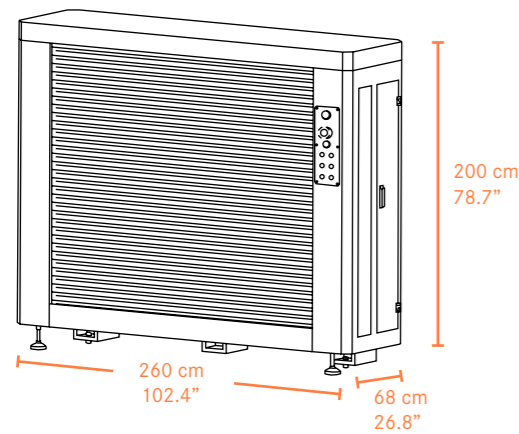
Large frame holding area enables simultaneous imaging & exposure of either large screens, or 1 or more standard size screens

Maximum Image Size: 80 x 120 cm | 31.5 x 47.2"  
Max Frame Size: 1 screen up to 115 x 167 cm | 45 x 66"  
or 2 screens up to 64 x 91 cm | 25 x 36"

# SAATI LTS 1015

High Resolution Digital Direct Laser Image & Exposure Unit

## Dimensions



## Characteristics

Touch screen with powerful workflow software

Glass-free vertical loading and frame lock system ensure accurate, easy screen placement and reduced pinholes

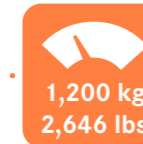
Solid metal construction provides a vibration free stencil making platform while maintaining a smaller footprint than other CtS machines



**Lasers**

**160**

**Weight**



**Power**



**110V**  
standard

**240V**  
with adapter

**1000W**  
consumption

Easy to use control panel engages and disengages frame clamps, carriages, shutter & emergency stop

Motorized safety shutter

Large frame holding area enables simultaneous imaging & exposure of either large screens, or 1 or more standard size screens

**Maximum Image Size:** 100 x 150 cm - 39.4 x 59.1"  
**Max Frame Sizes:** 1 screen up to 140 x 200 cm | 55 x 79"  
or 2 two screens up to 63.5 x 91.5 cm | 25 x 36"



# SAATI LTS Series

High Resolution Digital Direct Laser Image & Exposure Units

## SAATI LTS Series Individual Specs

Machine	LTS 6080	LTS 6080-VF	LTS 8012	LTS 1015
Lasers	96	96	128	160
Dimension	167 x 82 x 93 cm 65.7 x 32.3 x 36.6"	220 x 58 x 163 cm 86.6 x 22.8 x 64"	220 x 58 x 163 cm 86.6 x 22.8 x 64"	260 x 68 x 200 cm 102.4 x 26.8 x 78.7"
Weight	597 kg / 1316 lbs	850 kg / 1874 lbs	925 kg / 2039 lbs	1200 kg / 2646 lbs
Max Image Size	60 x 80 cm 23.6 x 31.5"	60 x 120 cm 23.6 x 47.2"	80 x 120 cm 31.5 x 47.2"	100 x 150 cm 39.4 x 59.1"
Max Frame Size (x1)	85 x 110 cm 33.5 x 43.3"	104 x 167 cm 41 x 66"	115 x 167 cm 45 x 66.0"	140 x 200 cm 55 x 79"
Max Frame Sizes (x2)	holds more than two small frames	58 x 78 cm 23 x 31"	64 x 91 cm 25 x 36"	64 x 91 cm 25 x 36"
Power Consumption	350 W	800 W	800 W	1000 W



## SAATI LTS Series Universal Specs

Resolution	847 - 1016 - 1270 - 1693 - 2540
Voltage	110/240 V
Interface	USB 2.0
Process Mode	Bi-Directional
Stencil Materials	Most kinds of emulsion & film
Max. Recommended Stencil Thickness	700 µm
Repeatability	Less than 0.1 mm
Sample Exposure Settings	Fabric Type <a href="#">SAATI Hi-R</a> 120.34 (305.34)   Color: Yellow Emulsion: <a href="#">SAATIgraf CTS7</a>   EOM: 9 µm DPI: 1270   Power: 50   Speed: 300 <a href="#">SAATI 21-Step</a> Exposure Level: Step 5 <b>Time: Less than 3.5 Minutes</b>

