



SAATImil

Precision Woven Fabrics For Milling, Sifting & Food Processing Applications

FOR THE MANY, BY THE FEW

—SAATI

Contents

SAATImil Brochure



<u>Company Information</u>	02
<u>Customer Service</u>	04
<u>SAATImil Fabrics</u>	06
<u>SAATImil Weave Types</u>	08
<u>SAATImil PA GG</u>	10
<u>SAATImil PA XXX</u>	12
<u>SAATImil PA HT</u>	14
<u>SAATImil PA XX</u>	16
<u>SAATImil PA HS</u>	18
<u>SAATImil PES GG</u>	20
<u>SAATImil MAR</u>	22
<u>SAATImil STS</u>	24

<u>Fabricated Components</u>	26
<u>SAATI Tendimesh Stretching System</u>	30
<u>SAATImil Tension Meter</u>	36
<u>SAATImil Adhesvies</u>	37
<u>Filip Screen Cleaners</u>	38
<u>Screen Cleaners</u>	42
<u>SAATImil Accessories</u>	45
<u>Interactive Product Index</u>	48
<u>Contact Information</u>	BACK

Engage
with
SAATI

SAATI S.p.A.
Via Milano, 14-22070 Appiano Gentile (CO), Italy | www.saati.com

FOR THE MANY, BY THE FEW

SAATI produces many products for all types of markets that find their way into the daily life of billions of people. We are leaders in both process and microfiltration, screen printing, and personal and vehicular multi-threat protection products.

Over Eighty Years of Innovative Action

SAATI is a multinational group with corporate headquarters that have been situated in northern Italy since 1935. Today SAATI is a leading force in the development, manufacturing and commercialization of high tech filter media & chemicals.

SAATI's passion and creativity are the foundation for an unsurpassed tradition of continuous innovation in the filtration markets. This endless pursuit is what drives SAATI's dedicated customer-centric R&D to functionalize products beyond simple filtration.

SAATI's wide range of synthetic textiles and fabricated parts in Polyester, Nylon, Polypropylene, PEEK and PPS are the ideal engineered solution for demanding microfiltration applications.

Through specialized processing and rigorous inspection, SAATI ensures consistent lot quality across tolerances, uniformity, strength, stability, and cleanliness for applications with pore sizes from 7 to 3,000 microns.

Perfecting the Art of Precision Woven Fabrics

With over 1,000 employees spread across multiple facilities worldwide, and a strong established track record in innovation and manufacturing excellence, SAATI's mission is to improve the life of every person every day – through working with both customers and partners to create a safer, healthier and cleaner world.

To guarantee product reliability, SAATI constantly runs tests and has all of the strictest and most up to date certifications that validate the consistency, performance, quality and characteristics of each item.

Specific SAATI fabrics are tested and certified in accordance with USP CLASS VI/ISO 10993 Regulations, and these fabrics are inspected and transformed into customized shapes in Class 10,000/ISO Class 7 Clean Rooms in accordance with UNI ISO 9001 regulations.



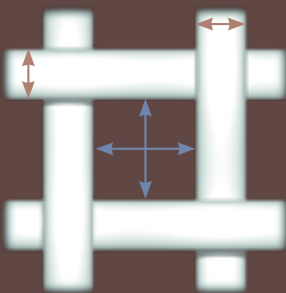
Customer Driven Innovation

Thanks to a direct presence in many countries, it is easy for customers to reach out, wherever they are located, and the response is always prompt. SAATI staff has a high level of technical expertise and dedication, and is always aiming to find the best solution for the customer's requirements.

SAATI sales representatives and engineers understand their customers' applications, working closely with staff in both the production and R&D departments to offer the customized solutions that best meets their needs.

The quality of SAATI's products is backed by the dedication and expertise of SAATI's customer service. Thanks to offices, warehouses, storage and fabrication facilities throughout the world, SAATI provides strong local support, expert responses to customer inquiries, strong engineering capability, technical support and fast delivery around the world.

SAATImil Fabrics



■ mesh opening
■ thread diameter

SAATImil Fabrics Key Features

- Monofilament woven fabrics
- Available in synthetic (PA-PES-MAR) fibers
- High open area
- Consistent geometrical tolerances
- Excellent strength and dimensional stability
- High resistance to mechanical stress, abrasion, chemical agents and corrosion
- Lot-to-lot consistency
- Longer screen life
- Intended to come into contact with food

Compliance of SAATImil Mesh Intended to Come into Contact with Food

Compliance of Composition:

Monofilament yarn polymer is in compliance with FDA Code of Federal Regulations (USA), Food and Drugs, Title 21, Part 177 Paragraph 177.1500 and 177.1420 (Indirect food additions: Polymers).

Compliance of Performance:

Compliance with Regulations

1935/2004/CE
& EU 10/2011

Specifically SAATI ensures full traceability throughout the production chain, from raw material to finished products vs. Customer. Mesh is tested in order to verify migration limits as per regulatories concerning plastic materials intended to come into contact with food.

SAATI's production processes are conducted in compliance with specific GMP.

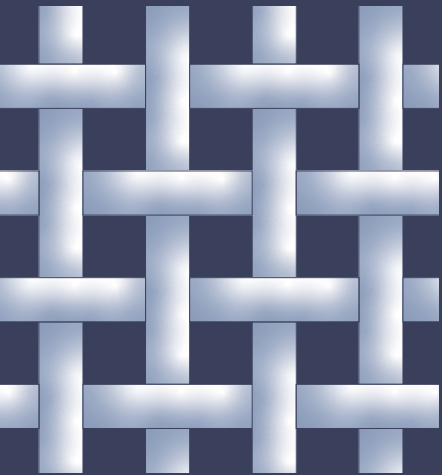


Intended to
Come In Contact
with Food

SAATImil Weave Types

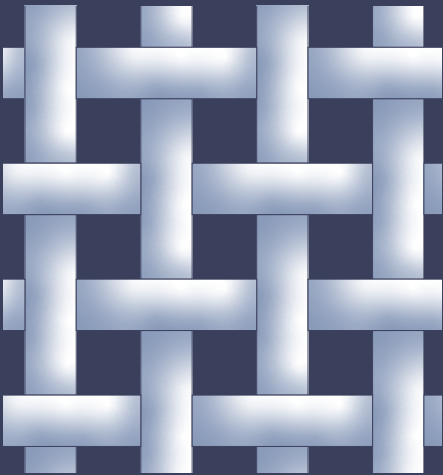
SAATImil fabrics are available in a variety of fiber sizes for a given opening size.
A large fiber improves screen life, but decreases screen flow capacity.
A smaller fiber will provide greater screening capacity but will wear out faster.
The flour milling industry has traditionally used a unique numbering system to denote variations in fiber sizes.

GG



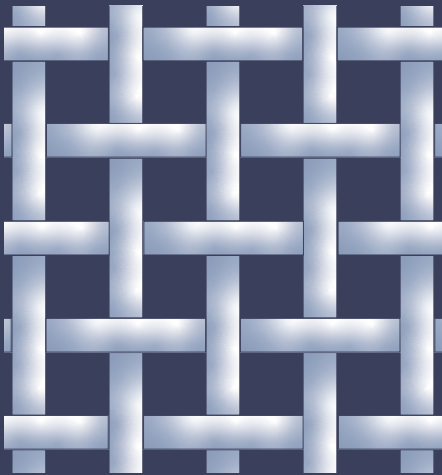
SAATImil GG or Grit Gauze grades are woven with coarser opening sizes with a smaller fiber to provide a higher screening capacity.

XXX



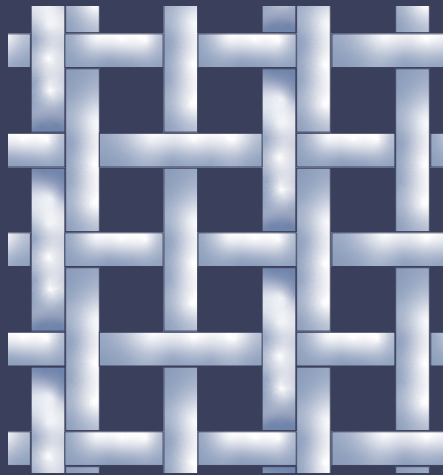
SAATImil XXX grades have a large fiber size and are used for hard grades of wheat and durum or other abrasive grains.

HT



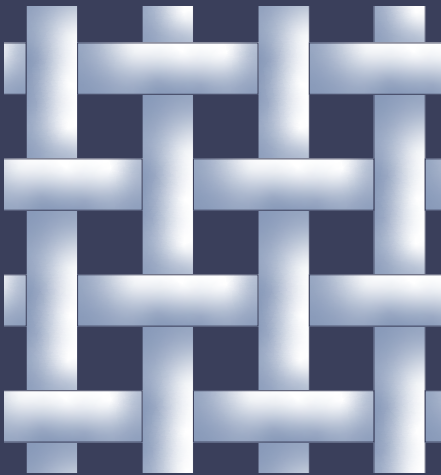
SAATImil HT are high-capacity screens in medium and finer opening sizes. They have a higher tensile strength and better abrasive resistance than the SAATImil XX grades. They are ideal for the newer type sifting frames which have glued-on screens requiring stretching to very high tension levels

XX

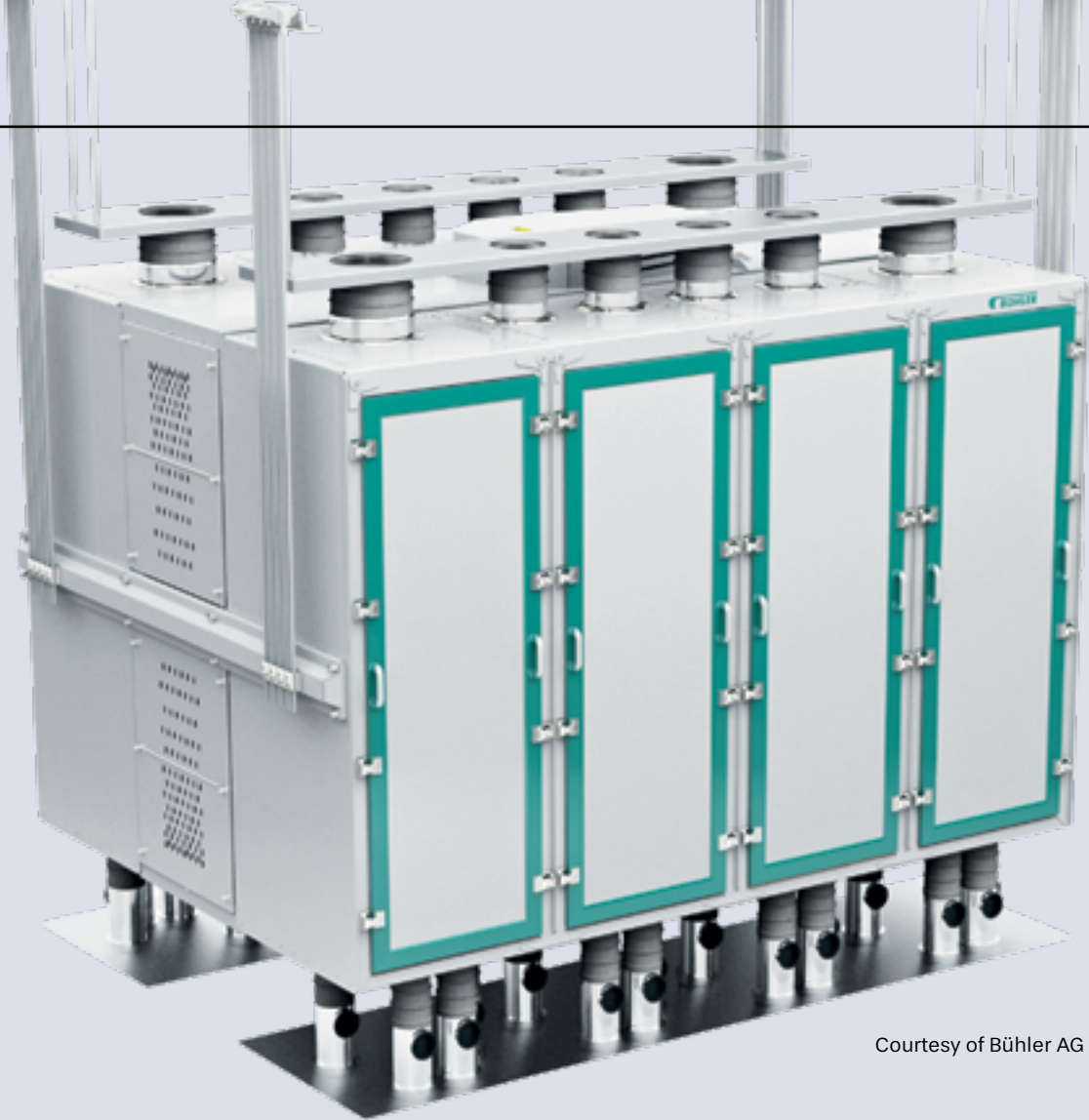


SAATImil XX fabrics are woven with two smaller diameter fibers adjacent to one another. This construction provides a rougher screen surface, which is beneficial when sieving soft wheat, bakery flour, and other products that are difficult to sift.

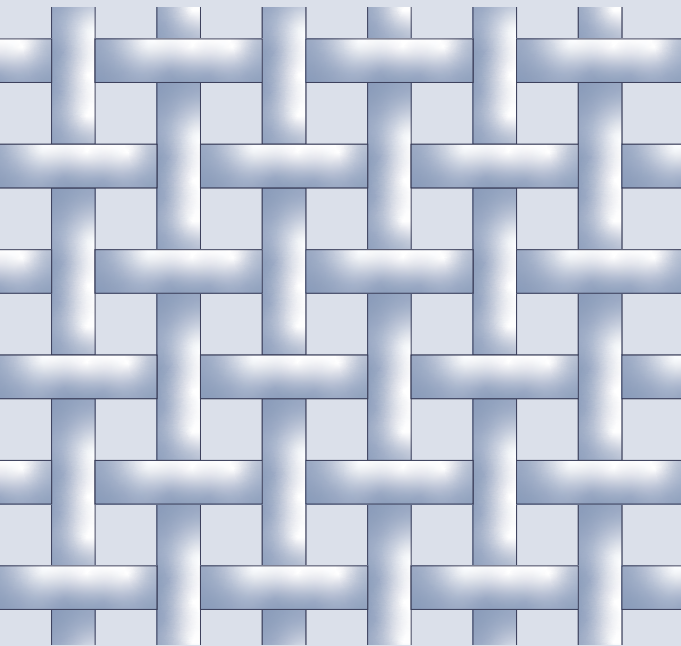
HS



SAATIMil HS are high-strength fabrics produced with thicker and stronger yarns for longer durability. They are suitable for turbo-sifter covers and centrifugal sifters.



Courtesy of Bühler AG



Engineered especially for separation of coarser particles, SAATImil™ GG or Grit Gauze grades are woven with coarser opening sizes made by smaller fiber to provide a higher screen capacity. Thanks to this mesh design, SAATImil™ GG screens are suitable for plansifter and purifier machines.

Key Features

- FDA Approved polymer
- Melamine Free
- Resistant to humidity changes
- Maintains tension

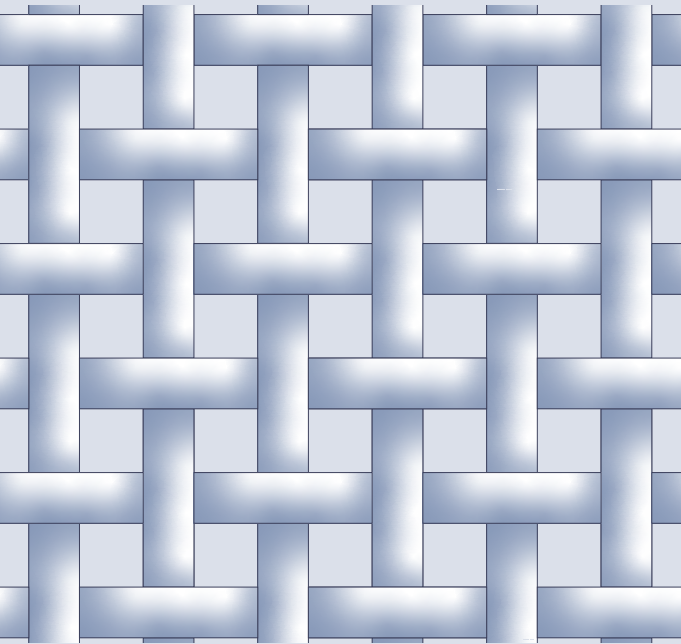


Intended to Come In
Contact with Food

SAATImil PA GG

Grit Gauze grades are woven with coarser opening sizes with a smaller fiber to provide a higher screening capacity

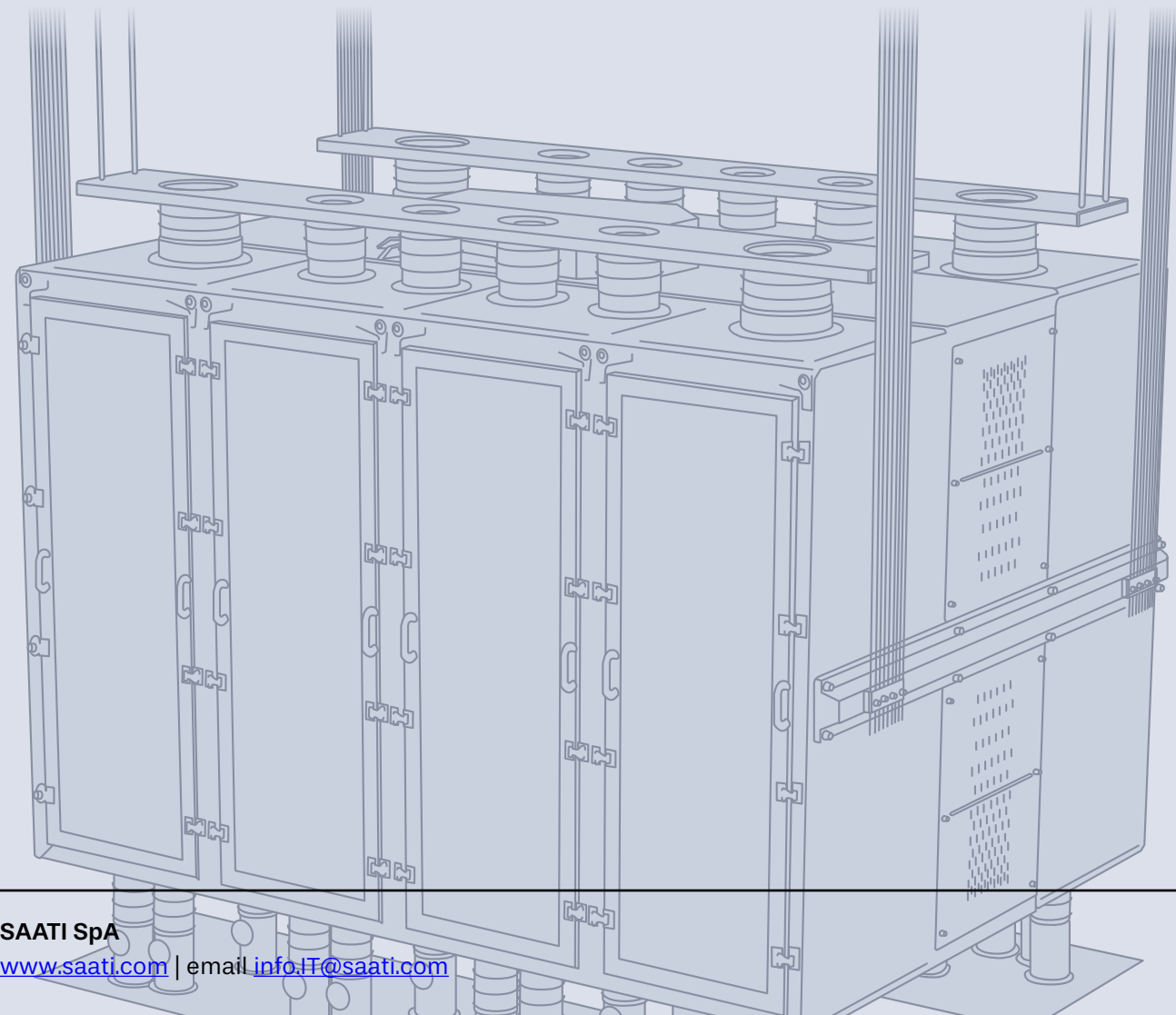
Product	Mesh Opening	Open Area	Mesh Count		Thread Diameter
	µm		cm	in	µm
PA 10 GG	1920	64	4.25	11	500
PA 12 GG	1800	61	4.5	11	500
PA 14 GG	1600	61	5	13	450
PA 15 GG	1400	62	5.5	14	400
PA 16 GG	1320	56	6	15	400
PA 17 GG	1250	56	6.5 x 5.75	17 x 15	400
PA 18 GG	1180	55	6.5	17	400
PA 19 GG	1120	59	7	18	325
PA 20 GG	1000	57	7.5	19	325
PA 22 GG	950	58	8	20	300
PA 23 GG	900	56	8.3	21	300
PA 24 GG	850	55	9	23	280
PA 26 GG	800	54	9.5	24	280
PA 27 GG	750	55	10.5	27	250
PA 28 GG	710	54	10.75	27	250
PA 30 GG	670	52	11	28	250
PA 31 GG	630	51	11.5	29	250
PA 32 GG	600	50	12	30	250
PA 34 GG	560	51	12.7	32	225
PA 36 GG	530	49	13.5	34	225
PA 38 GG	500	47	14	36	225
PA 40 GG	475	49	15	38	195
PA 42 GG	450	46	15.5	39	195
PA 44 GG	425	46	16	41	195
PA 45 GG	400	46	17	43	195
PA 47 GG	375	43	18	46	180
PA 48 GG	365	43	18	46	195
PA 50 GG	355	51	20	51	150
PA 52 GG	335	49	20.5	52	150
PA 54 GG	315	47	22	56	150
PA 58 GG	300	46	23	58	140
PA 60 GG	280	43	24	61	140
PA 62 GG	275	41	24	61	150
PA 64 GG	265	47	26	66	120
PA 66 GG	250	46	27	69	120
PA 68 GG	243	43	27.5	70	120
PA 70 GG	236	44	28	71	120
PA 72 GG	224	42	29	74	120
PA 74 GG	212	40	30	76	120



Characterized by large fiber size, **SAATImil™ XXX** range of woven screens is used for fine particle separation such as hard grades of wheat and durum or other abrasive grains. SAATImil™ XXX screens are used for plansifter and purifier machines.

Key Features

- FDA approved polymer
- Monofilament woven meshes
- High open area
- Mesh opening from 300 µm to 80 µm
- Maintains tension
- Consistent geometrical tolerances
- Longer screen life
- High resistance to mechanical stress, abrasion, chemical agents and corrosion



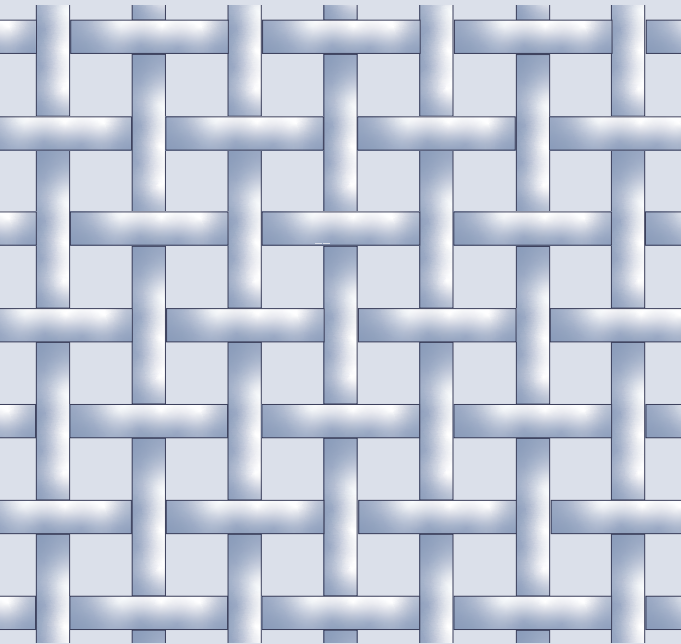
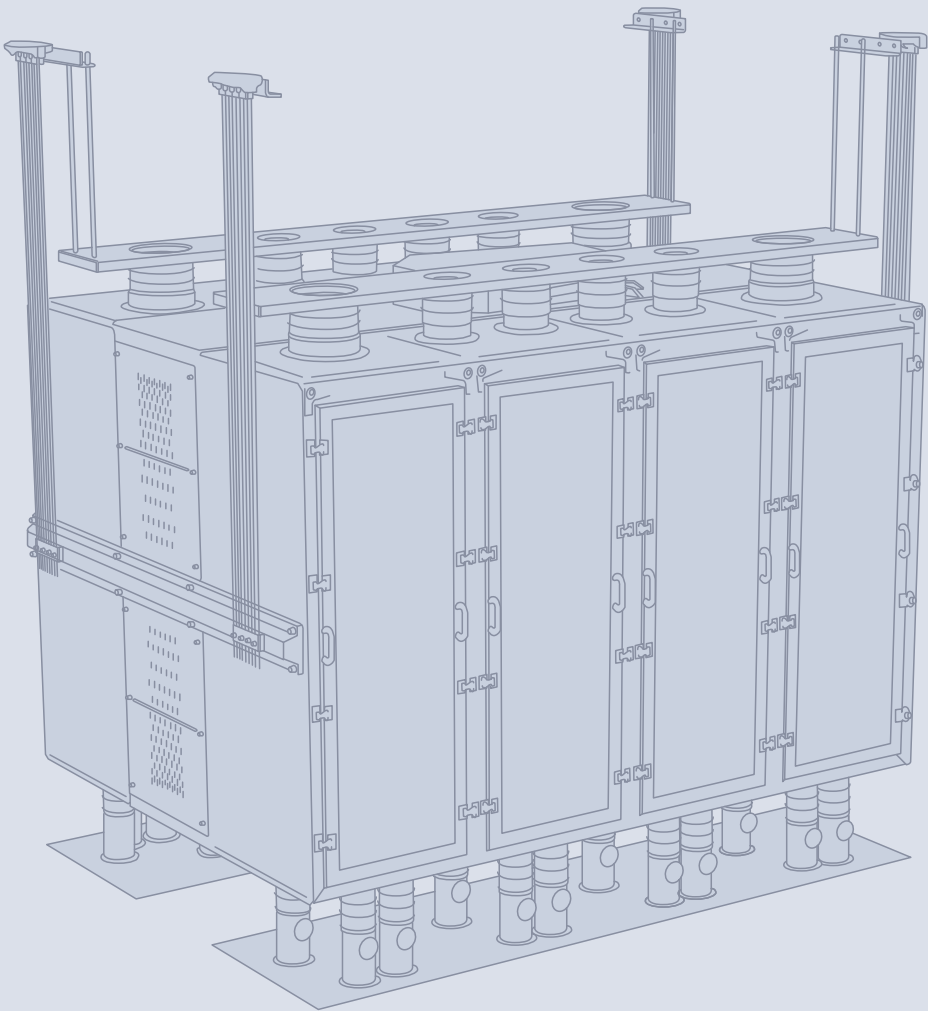
SAATImil PA XXX

SAATImil XXX Grades have a large fiber size and are used for hard grades of wheat and durum or other abrasive grains.

Product	Mesh Opening	Open Area	Mesh Count		Thread Diameter
	Micron		cm	in	
PA 3 XXX	300	46	23	58	140
PA 4 XXX	280	43	24	61	140
PA 5 XXX	250	46	27	69	120
PA 6 XXX	212	40	30	76	120
PA 7 XXX	200	39	31	79	120
PA 8 XXX	180	43	36	91	100
PA 8.5 XXX	160	37	38	97	100
PA 9 XXX	150	39	41	104	90
PA 9.5 XXX	140	36	43	109	90
PA 10 XXX	132	39	46	117	80
PA 10.5 XXX	125	38	49	124	80
PA 11 XXX	118	35	51	130	80
PA 12 XXX	112	37	55	140	70
PA 12.5 XXX	105	32	55	140	80
PA 13 XXX	100	32	57	145	70
PA 14 XXX	90	30	62	157	70
PA 14.5 XXX	90	35	66	168	61
PA 17 XXX	80	32	71	180	61



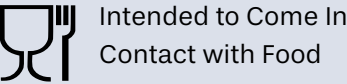
Intended to Come In
Contact with Food



SAATImil™ HT high-capacity woven screens are characterized by medium and small opening size for fine particles separation. They fit to recent type sifting frames, requiring high tensile stretching, for plansifter and purifier machines.

Key Features

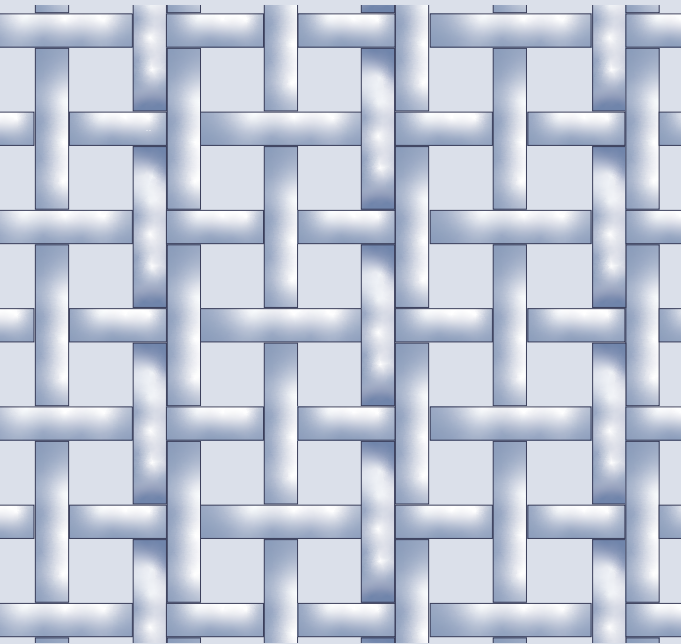
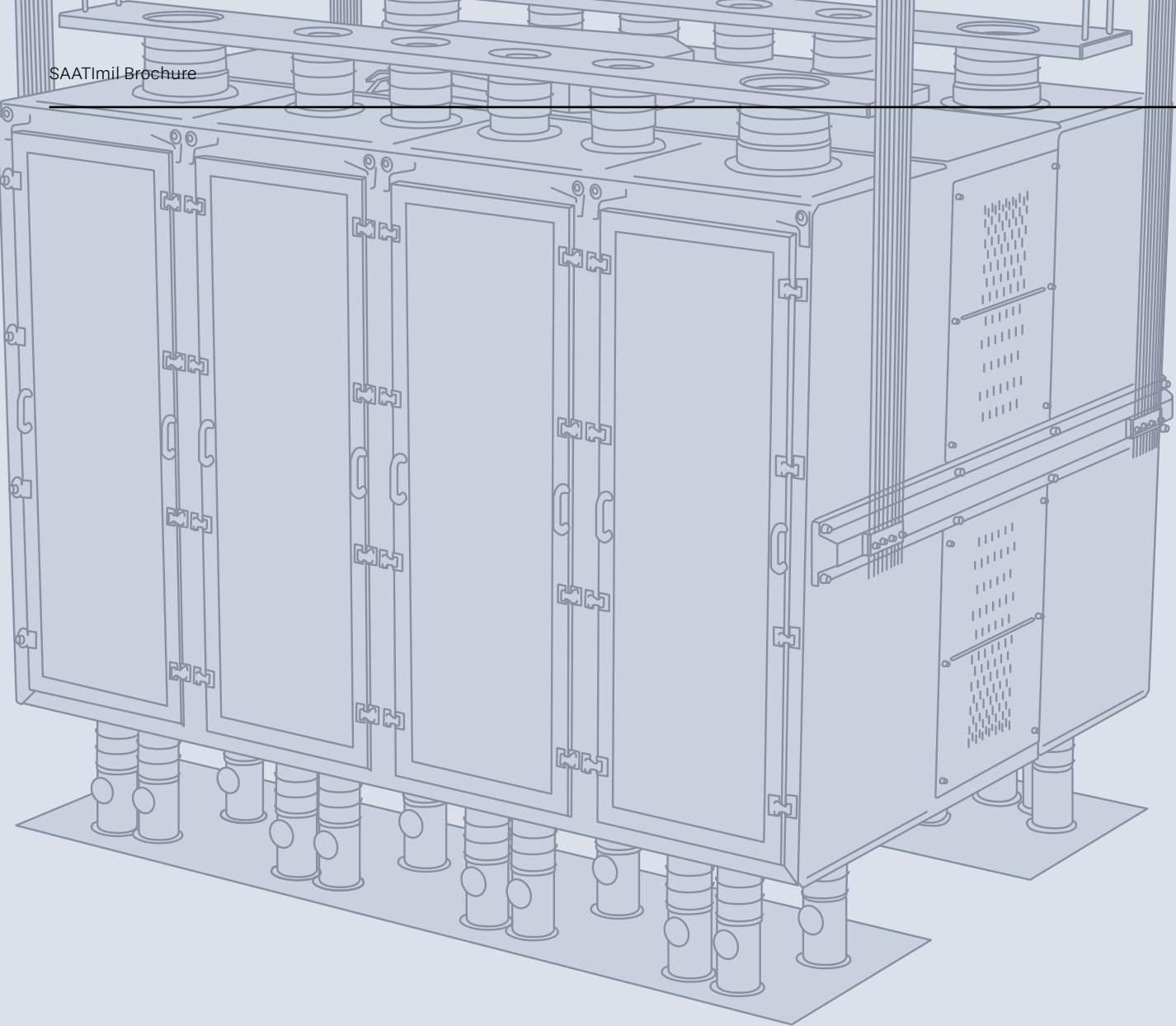
- FDA approved polymer
- Monofilament woven meshes
- High open area
- Plain weave
- Maintains tension
- Consistent geometrical tolerances
- Longer screen life
- High resistance to mechanical stress, abrasion, chemical agents and corrosion



SAATImil PA HT

High – capacity screens in medium and finer opening sizes. They have a higher tensile strength and better abrasive resistance than SAATImil XX grades.


Product	Mesh Opening	Open Area	Mesh Count		Thread Diameter
	Micron		cm	in	µm
PA 3 HT	300	51	23.5	60	120
PA 4 HT	280	51	25	64	120
PA 5 HT	250	51	28.5	72	100
PA 6 HT	212	47	32	81	100
PA 7 HT	200	43	34	86	100
PA 8 HT	180	43	36	91	100
PA 8.5 HT	160	42	40	102	90
PA 9 HT	150	43	43	109	80
PA 9.5 HT	140	41	45	114	80
PA 10 HT	132	42	49	124	70
PA 10.5 HT	125	41	51	130	70
PA 11 HT	118	41	53	135	70
PA 12 HT	112	42	57.5	146	61
PA 13 HT	100	38	62	157	61



SAATImil XX screens are woven with two smaller diameter fibers adjacent to one another. This type of screen construction increases its surface roughness to the screen, bringing benefits in sieving soft wheat, bakery flour and other products that are more difficult to sift.

Key Features

- FDA approved polymer
- Monofilament woven meshes
- Double warp structure
- Mesh opening from 212 µm to 85 µm
- High open area
- Maintains tension
- Consistent geometrical tolerances
- Longer screen life
- High resistance to mechanical stress, abrasion, chemical agents and corrosion
- Recommended for plansifters

 Intended to Come In
Contact with Food

SAATImil PA XX

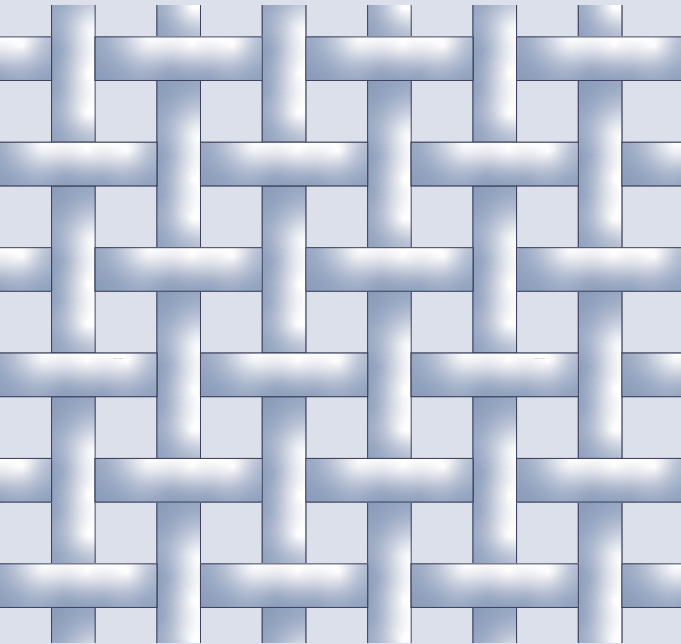
Fabrics that are woven with two smaller diameter fibers adjacent to one another, making them rougher in order to sift difficult products.

Product	Mesh Opening	Open Area	Mesh Count		Thread Diameter
	µm		cm	in	µm
PA 6 XX	212	47	30/36	76/91	(90+2x61)/80
PA 7 XX	200	48	33/36	84/91	(80+2x61)/80
PA 8 XX	180	46	36/40	91/102	(80+2x61)/70
PA 8.5 XX	160	44	39/43	99/110	(70+2x61)/70
PA 9 XX	150	44	41/48	104/121	(70+2x61)/61
PA 9.5 XX	140	43	43/50	110/127	(61+2x60)/60
PA 10 XX	132	44	47/52	120/132	(61+2x50)/61
PA 10.5 XX	125	40	49/54	124/137	(61+2x50)/61
PA 11 XX	118	42	50/59	128/151	(61+2x50)/50
PA 12 XX	112	40	52/62	132/157	(61+2x50)/50
PA 12.5 XX	106	40	56/64	142/163	(61+2x44)/50
PA 13 XX	100	38	57/67	145/169	(61+2x50)/50
PA 14 XX	95	38	61/69	156/175	(50+2x44)/50
PA 14.5 XX	90	35	94/71	234/175	(50+2x44)/50
PA 15 XX	85	34	65/74	165/188	(50+2x43)/50

SAATImil PA HS

SAATIMil HS are high-strength fabrics produced with thicker and stronger yarns for longer durability. They are suitable for turbo-sifter covers and centrifugal sifters.

Product	Mesh Opening	Open Area	Mesh Count		Thread Diameter
	Micron		cm	in	µm
PA 3 HS	300	34	19.5	49.5	200
PA 5 HS	250	34	23	58	170
PA 6 HS	210	33	28.5	72	150
PA 8 HS	165	32	34	86	120
PA 9 HS	150	39	41	104	90

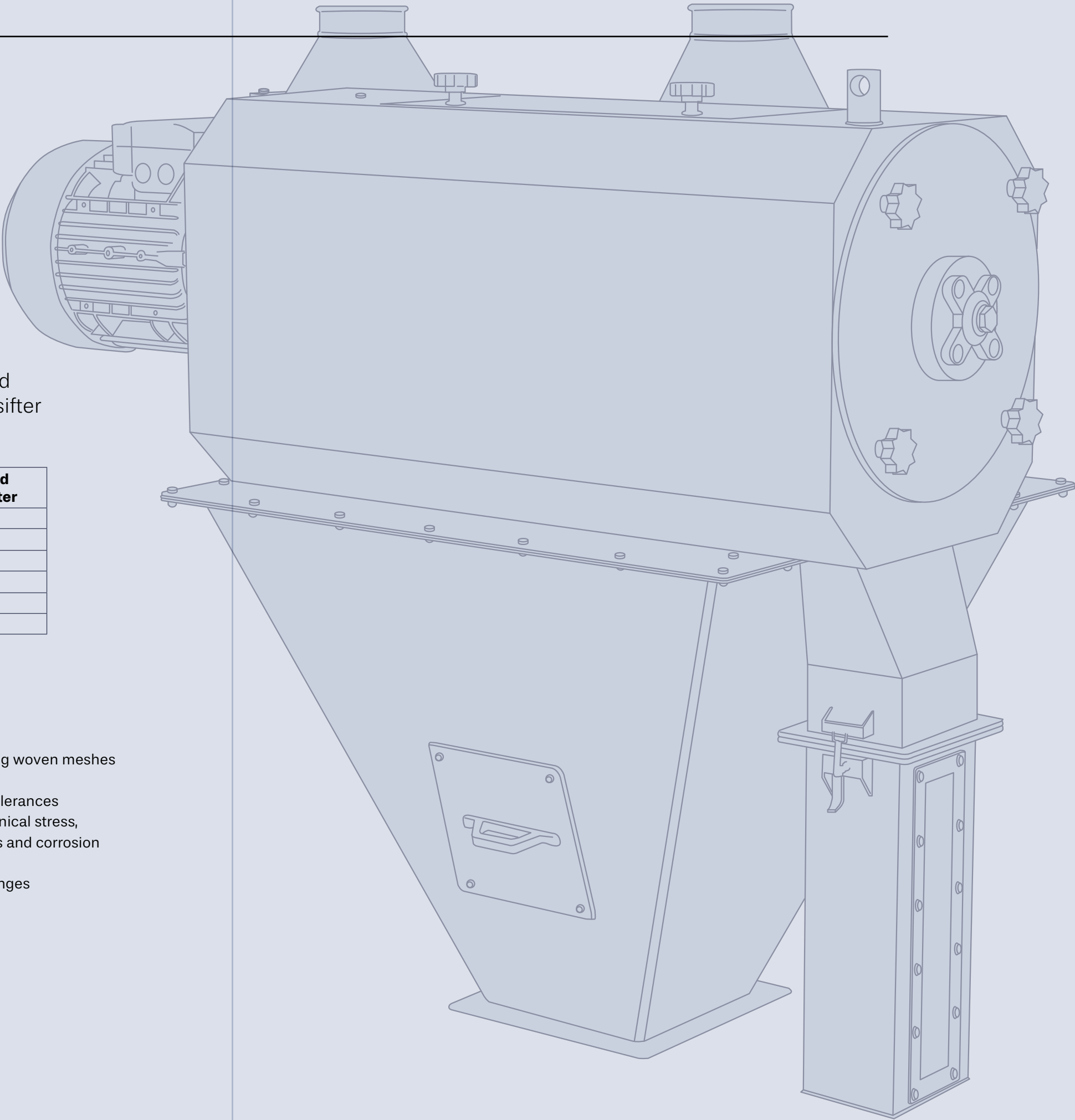


Key Features

- FDA Approved polymer
- Plain weave
- Monofilament extra-strong woven meshes
- Thicker thread diameters
- Consistent geometrical tolerances
- High resistance to mechanical stress, abrasion, chemical agents and corrosion
- Longer screen life
- Resistant to humidity changes
- Maintains tension



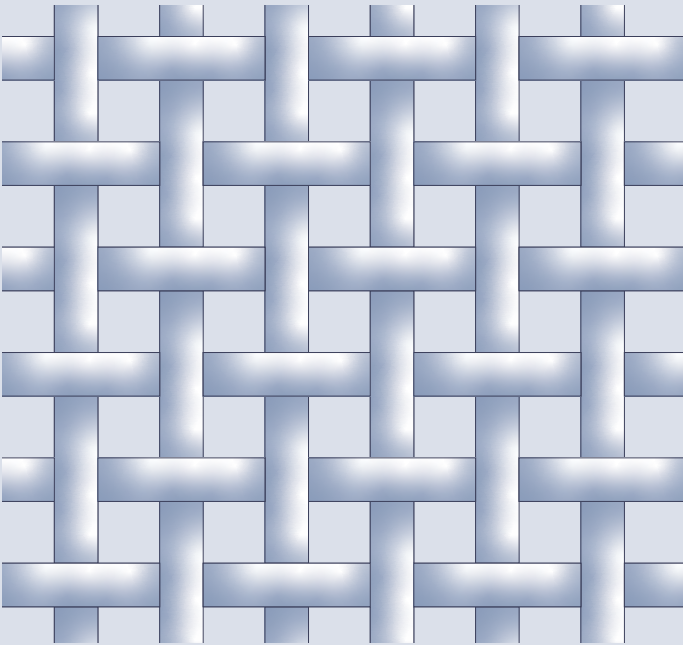
Intended to Come In
Contact with Food



SAATImil PES GG

Grit Gauze grades are woven with coarser opening sizes with a smaller fiber to provide a higher screening capacity

Product	Mesh Opening	Open Area	Mesh Count		Thread Diameter
	µm		cm	in	µm
PES 10 GG	2000	51	3.6	9.2	800
PES 12 GG	1800	61	4.25	11	500
PES 14 GG	1600	64	5	13	460
PES 15 GG	1400	57	5.4	13.7	450
PES 16 GG	1320	59	5.8	14.7	400
PES 17 GG	1180	58	6.5	17	385
PES 19 GG	1120	56	6.5	17	400
PES 20 GG	1000	57	7.5	19	320
PES 22 GG	950	58	8	20	300
PES 23 GG	900	56	8.3	21	300
PES 24 GG	850	55	9	23	280
PES 26 GG	800	55	9.5	24	280
PES 27 GG	750	53	10	25	260
PES 28 GG	710	52	10.5	27	260
PES 30 GG	670	52	10.8	27	260
PES 31 GG	630	53	11.5	29.2	240
PES 32 GG	600	51	12	30	240
PES 34 GG	560	47	12	30	260
PES 36 GG	530	50	13.4	34	220
PES 38 GG	500	48	14	36	220
PES 40 GG	475	50	15	38	200
PES 42 GG	450	48	15.4	39.1	200
PES 44 GG	425	46	16	41	200
PES 45 GG	400	52	18	46	160
PES 47 GG	375	50	19	48	160
PES 50 GG	355	47	19.4	49.3	160
PES 52 GG	335	46	20.2	51	160
PES 54 GG	315	46	21	53	160
PES 56 GG	300	44	23	58	145
PES 60 GG	280	43	24	61	145
PES 64 GG	265	53	27	69	100
PES 66 GG	250	44	27	69	120
PES 70 GG	236	41	29	74	120
PES 72 GG	224	35	27	69	145

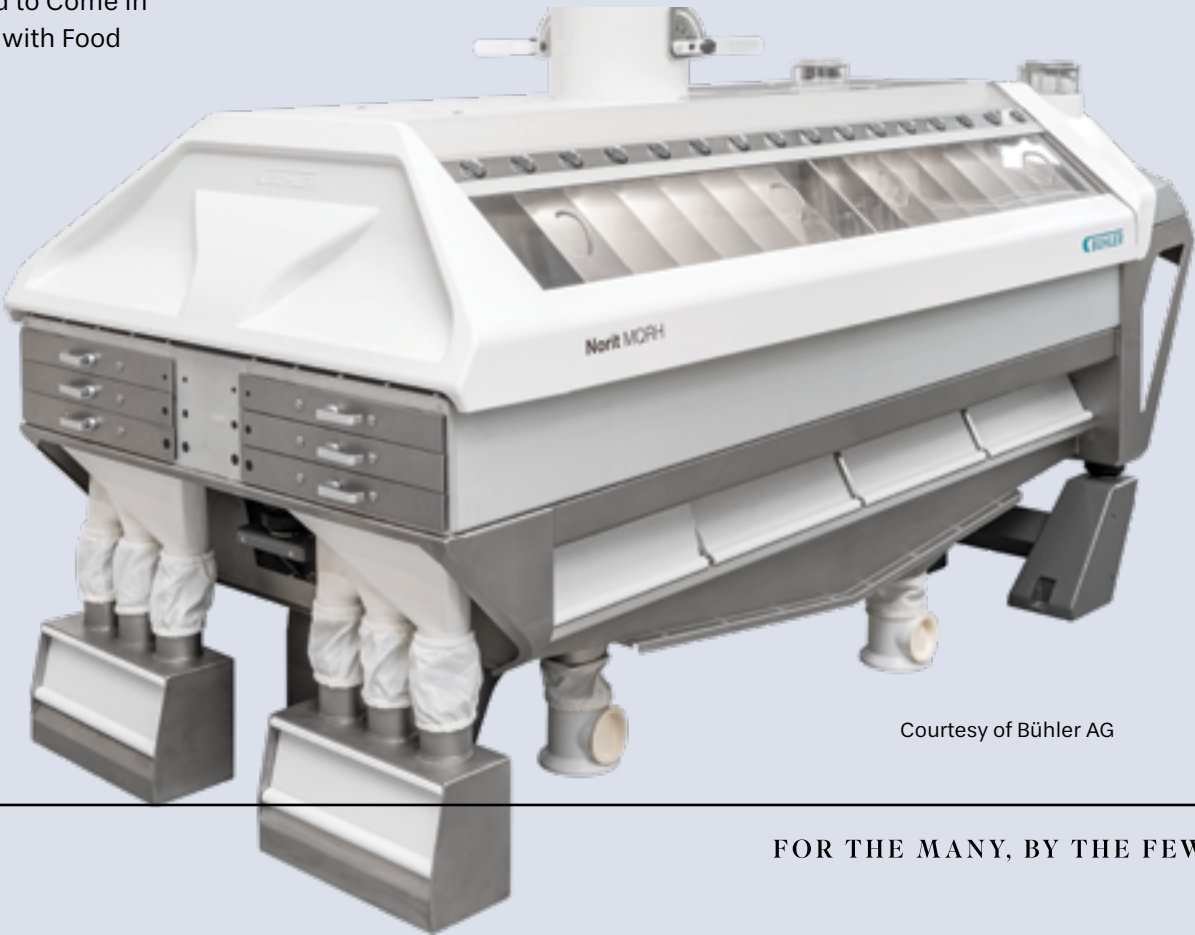


Intended to Come In
Contact with Food

Engineered especially for separation of coarser particles, SAATImil™ GG or Grit Gauze grades are woven with coarser opening sizes made by smaller fiber to provide a higher screen capacity. The rough fabric surface makes the product remain longer on the sieves. This leads to better separation.

Key Features

- FDA Approved polymer
- Melamine Free
- Resistant to humidity and temperature changes
- Maintains tension

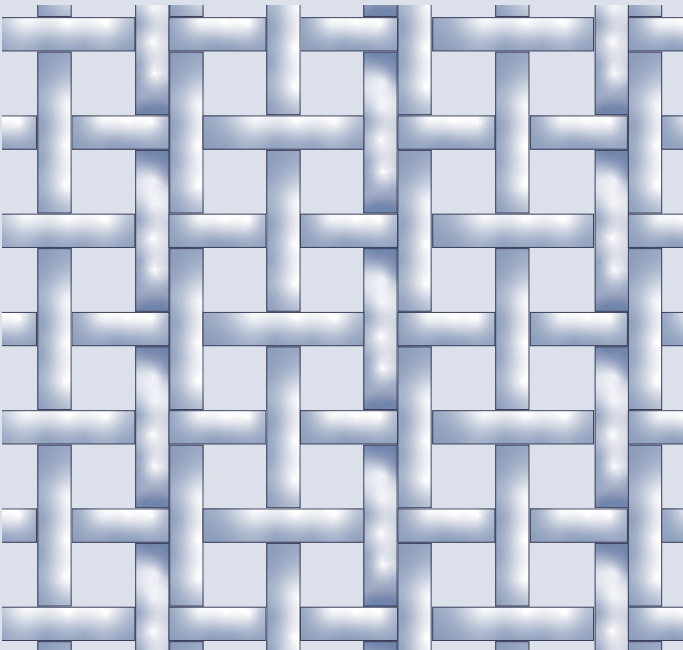
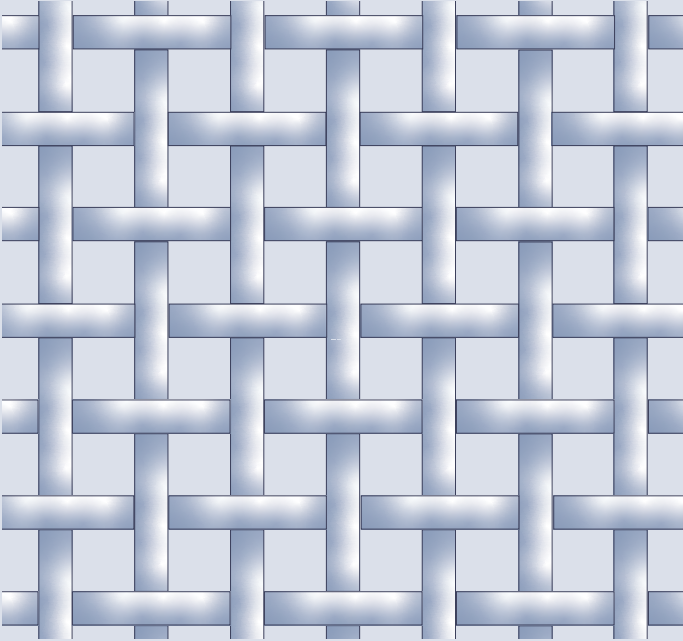


Courtesy of Bühler AG

SAATImil MAR

Specially Treated Mesh that Resists Moisture Absorption

Product	Mesh Opening	Open Area	Mesh Opening		Thread Diameter
	Micron		cm	in	
3 HT	300	50	24	61	120
4 HT	280	44	23	58	145
5 HT	250	44	27	69	120
7 HT	200	45	36	91	90
8 HT	180	41	34	86	100
8.5 HT	160	42	38	97	90
9 HT	150	43	43	109	80
9.5 HT	140	40	45	114	80
10 HT	132	40	49	124	70
10.5 HT	125	41	55	140	64
11 HT	118	38	51	130	70
12 HT	112	29	46	117	90
13 HT	100	33	55	140	70
9 XX	150	40	40/48	101/122	(70+2x64)/64
10 XX	132	43	47/52	119/132	(64+2x48)/48
11 XX	118	41	50/61	127/155	(64+2x48)/48
12 XX	112	40	51/61	129/155	(64+2x48)/48





SAATImil MAR™ is obtained from an advanced melamine free and FDA approved polymer then is woven and finished complex techniques.

The **MAR HT** and **MAR XX** lines of fabric are the ideal choice for all milling applications where standard nylon cloths do not stand high humidity values and subsequently adsorb moisture, causing a critical loss of tension and decreased screening efficiency.

Key Features

- FDA Approved polymer
- Melamine Free
- Resistant to humidity changes
- Maintains tension

 Intended to Come In Contact with Food

 Intended to Come In Contact with Food

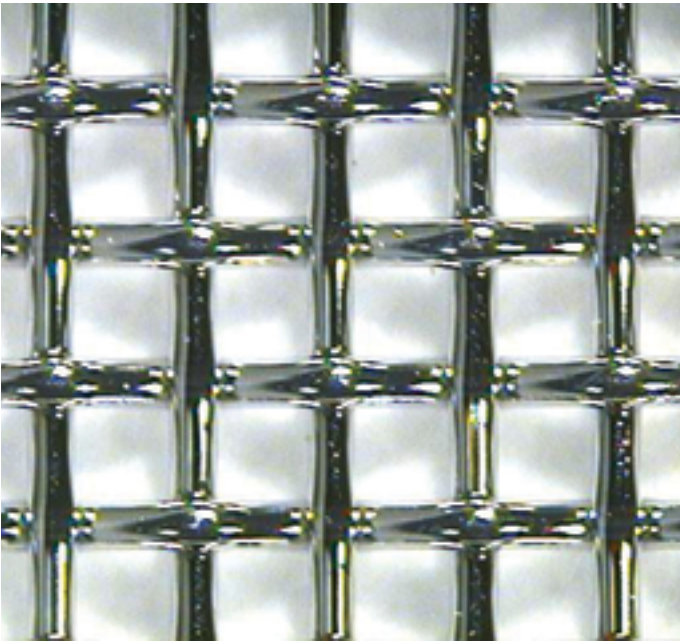
SAATImil STS

Woven Stainless Steel for Abrasive Sifting

SAATImil STS is a range of stainless steel woven meshes designed to sieve accurately abrasive materials including food, chemical products, stones and a variety of powders.

Key Features

- Uniform pore size
- Consistent wire diameter
- Resistant to humidity
- Static loading
- Accurate sizing
- Consistent geometric tolerances
- Longer sieving operating life



Product	Mesh Opening		Open Area	Wt.	Wire Diameter	
	µm	inch			µm	inch
SAATImil STS			%	%		
STS 10 2240/74	2240	0,0882	74	0,65	360	0,0142
STS 11 2000/74	2000	0,0787	74	0,56	320	0,0126
STS 12 1800/72	1800	0,0709	72	0,61	320	0,0126
STS 14 1600/77	1600	0,0630	77	0,34	220	0,0087
STS 16 1400/75	1400	0,0551	75	0,38	220	0,0087
STS 17 1250/72	1250	0,0492	72	0,42	220	0,0087
STS 18 1180/71	1180	0,0466	71	0,44	220	0,0087
STS 19 1120/70	1120	0,0464	70	0,46	220	0,0087
STS 20 1060/69	1060	0,0417	69	0,48	220	0,0087
STS 21 1000/67	1000	0,0394	67	0,51	220	0,0087
STS 22 950/68	950	0,0374	68	0,44	200	0,0079
STS 23 900/67	900	0,0354	67	0,46	200	0,0079
STS 24 850/66	850	0,0334	66	0,48	200	0,0079
STS 26 800/64	800	0,0315	64	0,52	200	0,0079
STS 27 750/65	750	0,0295	65	0,44	180	0,0071
STS 28 710/64	710	0,0279	64	0,46	180	0,0071
STS 30 670/65	670	0,0264	65	0,40	160	0,0063
STS 32 630/64	630	0,0248	64	0,41	160	0,0063
STS 34 600/62	600	0,0236	62	0,42	160	0,0063
STS 35 560/60	560	0,0220	60	0,45	160	0,0063
STS 36 530/59	530	0,0209	59	0,47	160	0,0063
STS 38 500/57	500	0,0197	57	0,49	160	0,0063
STS 40 475/56	475	0,0187	56	0,52	160	0,0063
STS 42 450/58	450	0,0177	58	0,42	140	0,0055
STS 43 465/62	465	0,0183	62	0,34	125	0,0049
STS 44 425/57	425	0,0167	57	0,44	140	0,0055
STS 46 450/64	450	0,0177	64	0,29	112	0,0044
STS 46 400/54	400	0,0157	54	0,46	140	0,0055
STS 48 425/63	425	0,0167	63	0,30	112	0,0044
STS 50 400/61	400	0,0157	61	0,32	112	0,0044
STS 50 375/53	375	0,0148	53	0,48	140	0,0055

Product	Mesh Opening		Open Area	Wt.	Wire Diameter	
	µm	inch			µm	inch
SAATImil STS			%	%		
STS 52 375/59	375	0,0148	59	0,33	112	0,0044
STS 52 355/51	355	0,0140	51	0,51	140	0,0055
STS 54 375/62	375	0,0148	62	0,27	100	0,0039
STS 54 335/50	335	0,0132	50	0,53	140	0,0055
STS 56 355/61	355	0,0140	61	0,28	100	0,0039
STS 58 335/59	355	0,0132	59	0,29	100	0,0039
STS 58 315/54	315	0,0124	54	0,37	112	0,0044
STS 60 325/58	325	0,0128	58	0,30	100	0,0039
STS 62 315/58	315	0,0124	58	0,31	100	0,0039
STS 62 300/53	300	0,0118	53	0,39	112	0,0044
STS 64 300/56	300	0,0118	56	0,32	100	0,0039
STS 66 280/51	280	0,0110	51	0,41	112	0,0044
STS 68 280/54	280	0,0110	54	0,33	100	0,0039
STS 70 265/53	265	0,0104	53	0,35	100	0,0039
STS 72 250/51	250	0,0098	51	0,36	100	0,0039
STS 76 236/49	236	0,0093	49	0,38	100	0,0039
STS 78 224/48	224	0,0088	48	0,39	100	0,0039
STS 80 218/47	218	0,0086	47	0,40	100	0,0039
STS 84 212/49	212	0,0083	49	0,34	90	0,0035
STS 88 200/48	200	0,0079	48	0,36	90	0,0035
STS 88 190/43	190	0,0075	43	0,45	100	0,0039
STS 90 190/46	190	0,0075	46	0,37	90	0,0035
STS 90 180/41	180	0,0071	41	0,46	100	0,0039
STS 94 180/44	180	0,0071	44	0,38	90	0,0035
STS 94 170/40	170	0,0067	40	0,48	100	0,0039
STS 105 160/47	160	0,0063	47	0,25	75	0,0029
STS 120 140/47	140	0,0055	47	0,26	65	0,0026
STS 135 125/44	125	0,0049	44	0,28	65	0,0026
STS 145 118/46	118	0,0046	46	0,23	56	0,0022
STS 165 100/44	100	0,0039	44	0,21	50	0,0020
STS 180 95/46	95	0,0037	46	0,18	45	0,0018

Fabricated Components



Dust Filter Bags

Custom dust filter bags produced for most standard OEM baghouses. DFB's are available with materials PES, PP, and Nomex with surface finishing plain, singed, eggshell or PTFE. Seams can be sewn or heat welded. DFB's can be made top with raw edge, beaded cuff, or snap band.



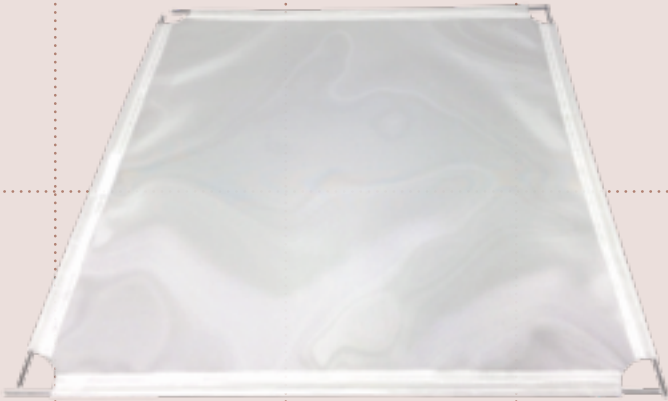
Centrifugal Sifting Screens

SAATImil manufactures sifting screens for all centrifugal sifter types, in a variety of designs. With capabilities to sew multifilament edges and seams, or welding urethane to the SAATImil mesh, SAATI has durable products that provide a consistent separation. Our urethane seams ensure a solid product that does not show wear and tear. In addition, with urethane edging, it provides sanitary screens that can be washed and cleaned with little contamination.

Specific SAATI Centrifugal Sifting Screens are intended to come in contact with food, and results of overall and specific migration tests are always available.



Intended to Come In
Contact with Food



Purifier Covers

SAATImil also manufactures purifier covers for all types of machines. The purifier covers can be manufactured either with PA GG or PES GG, with or without plastic rods and with rounded corners.

SAATI Purifier Covers are intended to come in contact with food, and results of overall and specific migration tests are always available.



Intended to Come In
Contact with Food

Connector Sleeves

SAATImil is SAATI's dedicated line for the flour milling industry, which includes an extensive selection of fabric types that are manufactured in accordance with ISO 9001:2000 and in compliance with current food regulations.

SAATImil Connector Sleeves ensure a permanent and secure connection between plansifter, purifier, milling equipment, and inlet and outlet devices. The fabrication, developed for this specific application, is able to grant the correct behavior for each miller's needs. The SAATImil Connector Sleeves are made with food grade polyester multifilament material that is compliant with FDA and EU 10/2011 regulation. This is proven by a migration test that has to be available and that SAATI can supply on request. Yarn used for assembly is food grade as well, in order to avoid any cross contamination for accidental flour contact during charge and discharge operation.

Thanks to the material's elasticity SAATImil Connector Sleeves are resistant to the plansifter's continuous movement, granting excellent lifetime and performance that have been tested for years by the major milling equipment manufacturers.

SAATImil Connector Sleeves can be fabricated to customer specification and according to the equipment standard sizes. SAATI can also fit all customer requirements for other configurations made with ends enclosing shock cord, elastic, draw string, or hems. Sleeves can also be produced with or without support rings.



Features

- Fully FDA Polymer Approved – Conformity Declaration upon request
- Fully Compliant with EU 10/2011 – Conformity Declaration upon request
- Excellent lifetime
- High air permeability
- Tailor-made fabrication

Product	Diameter		Length		Ring n°
	mm	inch	mm	inch	
MPET 7338 Food Grade	300	11.8	310	12.2	2
MPET 7338 Food Grade	240	9.5	280	11	2
MPET 7338 Food Grade	210	8.3	310	12.2	2
MPET 7338 Food Grade	150	6	290	11.4	2
MPET 7338 Food Grade	120	4.7	290	11.4	2
MPET 7338 Food Grade	120	4.7	150	6	1
MPET 7338 Food Grade	120	4.7	260	10.2	2
MPET 7338 Food Grade	120	4.7	110	4.3	0

Other sizes, different from standard ones, are available upon request.



Photo courtesy of Lantmannen and FilTrade

SAATI Tendimesh

Rapidly Stretch Screens Off-Contact with Durable, Intuitive Stretch Clamps

SAATI Tendimesh is the newest screen stretching system, specially developed for the milling industry.

Thanks to the combination of our competency and experience with technical meshes in milling applications, we offer a new product that confers significant advantages in milling screen production.

SAATI Tendimesh is a modular system with the option to use two different jaw sizes, and with a choice between single and double pressure circuits through the use of two different control panels.

This flexibility guarantees compatibility with different frame types (metal or wood) and sizes (i.e. 710x655 cm, 570x620cm, 570x500 cm). The assembly option with two circuit panels facilitates independent very fine tuning on the X & Y axes, in order to achieve equal tension in the warp and weft directions.

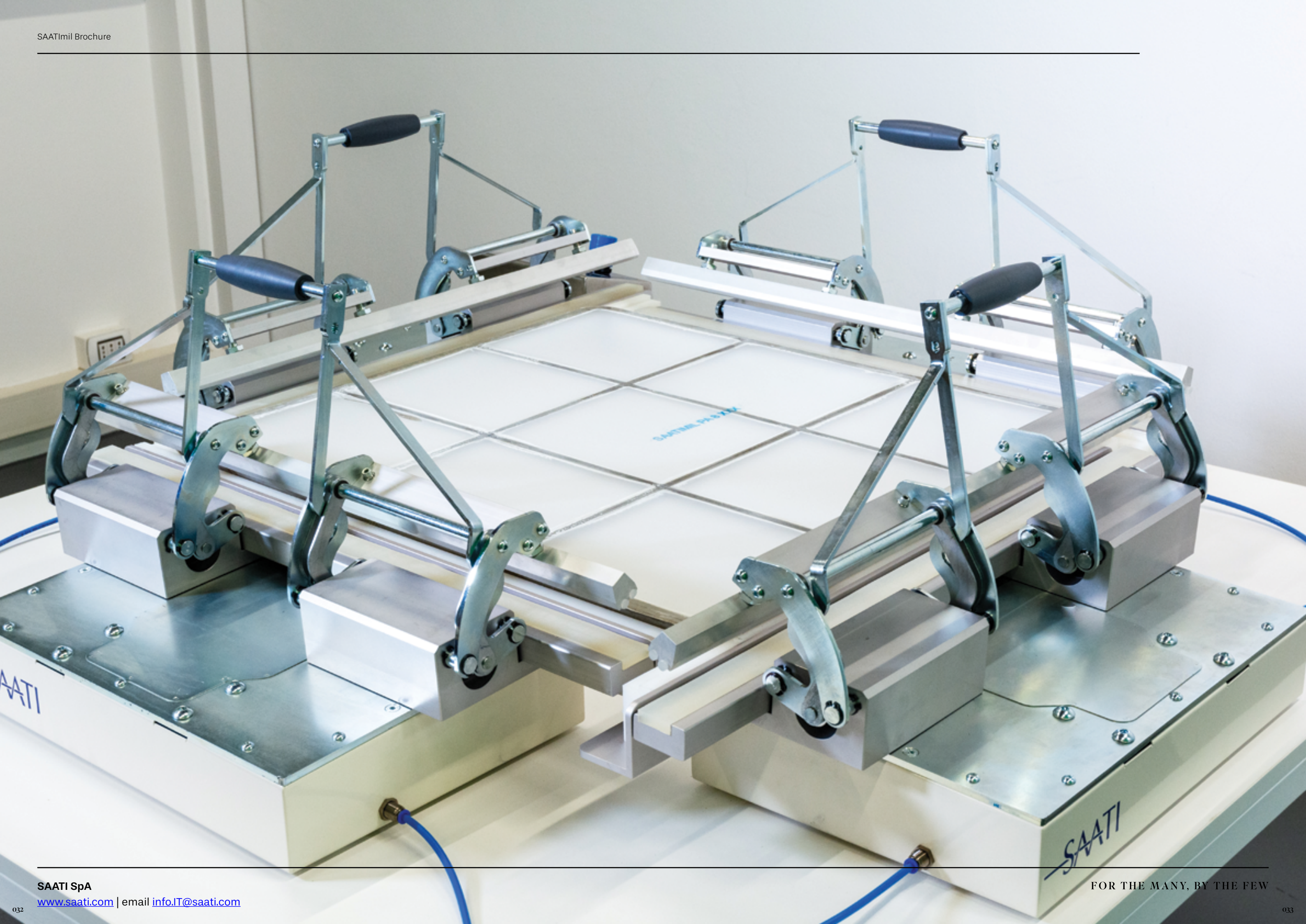
SAATI Tendimesh is a compact device with a small footprint, built with high quality materials and a reliable mechanism.

SAATI Tendimesh clamps lock mechanically instead of pneumatically, so in the event of a loss of pressure, the mesh will remain secured in the jaws.

The system works with a dedicated table and line of accessories that enable you to tension every type of fabric on every type of frame.

SAATI Tendimesh Specifications	
Jaw Width	24.8 or 28.7" 63 or 73 cm
Maximum Tension	15.9 lb/sq. in. at 100 psi 28 N/cm at 7 bar
Clamp Weight	55.1 lbs 25 kg
Piston Stroke	1.96" 50 mm
Clamp Total Length	13" 331 mm
Clamp Length to Contact Point with Frame	10.91" 277 mm
Colors	RAL 9001 – standard
Control Panel	Pneumatic switches for handling tension / pressure gauge / emergency lock
Compressed Air	95–100 PSI (humidity free air line required)
Recommended Table Size	59 x 59" 1500 x 1500 mm





Tendimesh Accessories

Tensioning Support



≤ 112 micron

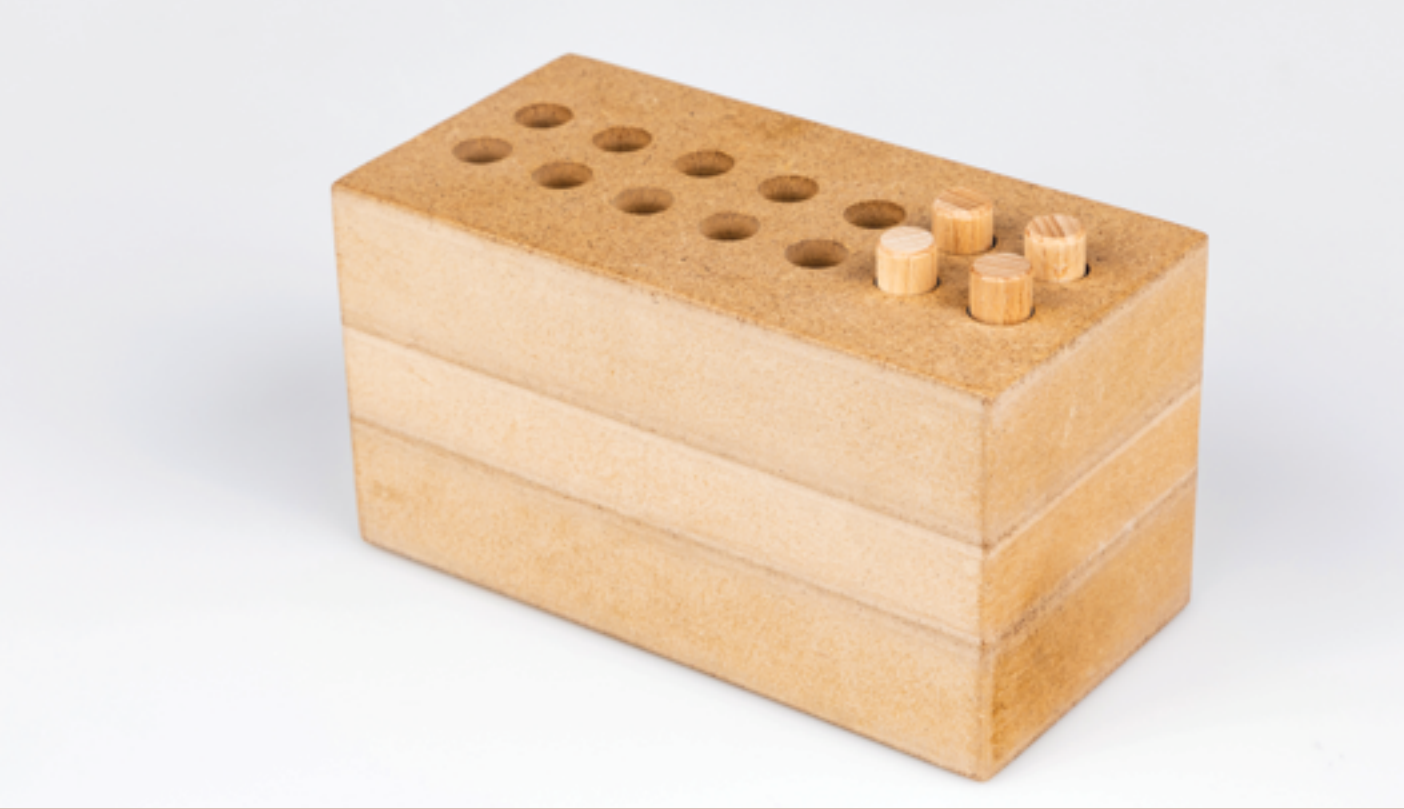


≤ 140 micron



≤ 200 micron

Frame Spacer



MDF Support



Dimensions

- 620 x 30 h40 mm
- 620 x 30 h47 mm
- 720 x 30 x h40 mm
- 720 x 30 x h47 mm

Dimensions

- 620 x 30 x 47-53 mm
- 720 x 30 h47-53 mm

Suitable for both wood and metal frames.

SAATImil Tension Meter

Quickly and easily determine the tension for screens both in the process of stretching and before, during and after use

The Newman ST-Meter is a uniquely constructed, heavy-duty mechanical tension meter that assures durability and long-term accuracy in monitoring screen tension. It is the only meter in the world with all stainless steel hardened gears, shock-proof industrial grade internal gear movement and all jeweled sapphire bearings.

A screen tension meter of exceptional quality will produce accurate readings consistently for a very long time. All other mechanical meters have softer brass gears and bushings that greatly reduce their life and accuracy. The crystal is shatter proof and curved to reduce glare. The heavy-duty protective aluminum housing is the most durable meter made anywhere. The modular construction assures easy and inexpensive repairs, if any are necessary.

Key Features

- Shock-proof unitized internal gear movement
 - Eight sapphire jeweled bearings
 - Six compound hardened stainless steel gears
 - Also available in kilograms/meter
 - Direct reading in N/cm, ±1% accuracy
- Shatterproof crystal
 - Heavy-duty protective aluminum housing
 - A calibration plate is provided with each meter, and is packaged in a protective carrying case



Technical Data		
Test Conditions		50/60% Humidity 18 - 20°C
Measuring Range		5-60 N/cm
Sifter Mesh Opening (µm)	Original Tension N/cm	Tension after 3 hours N/cm
SAATImil PA >375	16 - 14	13 - 8
SAATImil PA 355 - 280	14 - 12	11 - 7
SAATImil PA 270 - 150	12 - 10	9 - 6
SAATImil PA 140 - 80	10 - 8	7 - 5
Weight of the Newman ST-Meter		2.2 lbs

SAATImil Adhesives



Ultrafix CA Series Adhesives

SAATI Ultrafix CA adhesives are designed for bonding wire cloth and synthetic screens to wood, metal or plastic frames. Ultrafix CA adhesive is available in 50 and 450 gram containers.

Poly Squeegee (Scrapers)

Poly Squeegee (scrapers) are available in 5 x 7.5 cm

Ultrafix Product	Viscosity
Ultrafix CA 150	Very High
Ultrafix CA 100	High
Ultrafix CA 50	Medium
Ultrafix CA 5	Low



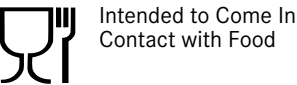
Ultrafix CA Activator

Ultrafix CA Activator cures cyanoacrylate adhesive instantly and is available in two types of dispensers: aerosol and pump. It is available in 160 gr containers.

Ultrafix Remover

Ultrafix Remover is a convenient gel which removes Ultrafix adhesives. This gel is effective on urethane-based and cyanoacrylate adhesives. Ultrafix Remover is available in 1 and 5 kg containers.

Filip Sieve Cleaners



SAATI offers an assortment of Filip sieve cleaners that will help you to maximize your milling yield. Filip has been developing and producing sieve cleaners for over 100 years. The carefully calibrated design, selected materials and weight of Filip products imbue them with the efficiency, durability and safety that continually position them as the highest quality sieve cleaners available.



Style 100: Sieve Cleaning Brush with Solid Stainless Steel Slider Knob, Black Nylon Bristles for Wire Mesh



Style 101: Sieve Cleaning Brush with Solid Stainless Steel Slider Knob Natural Hair for Synthetic Mesh



Style 102: Sieve Cleaning Brush with Solid Stainless Steel Slider Knob White Nylon Bristles for Synthetic Mesh



Style 110: Sieve Cleaning Brush with Solid Stainless Steel Slider Knob Black Nylon Bristles for Wire Mesh – Large Model



Style 111: Sieve Cleaning Brush with Solid Stainless Steel Slider Knob Natural Hair for Synthetic Mesh – Large Model



Style 112: Sieve Cleaning Brush with Solid Stainless Steel Slider Knob White Nylon Bristles for Synthetic Mesh – Large Model



Style 120: Sieve Cleaning Brush with Plastic Slider Knob Black Nylon Bristles for Wire Mesh – Large Model



Style 121: Sieve Cleaning Brush with Plastic Slider Knob Natural Hair for Synthetic Mesh – Large Model



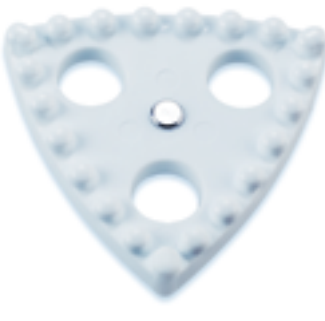
Style 122: Sieve Cleaning Brush with Plastic Slider Knob White Nylon Bristles for Synthetic Mesh – Large Model



Style 200: Sieve Cleaner with Studs with Solid Stainless Steel Slider Knob




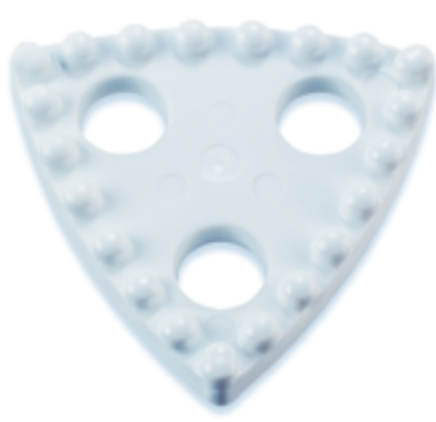
Style 201: Sieve Cleaner with Studs with Plastic Slider Knob



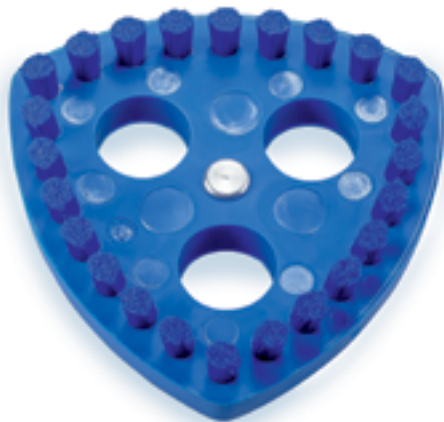
Style 210: Sieve Cleaner with Studs with Solid Stainless Steel Slider Knob – Large Model

Filip Sieve Cleaners

 Intended to Come In
Contact with Food



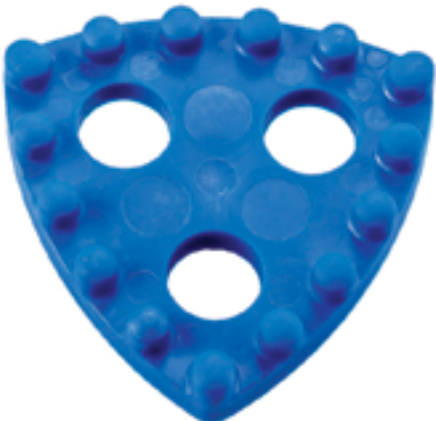
Style 211: Sieve Cleaner with Studs with Plastic Slider Knob – Large Model



Style 1103: Blue Sieve Cleaning Brush with Solid Stainless Steel Slider Knob Blue Nylon Bristles for Synthetic Mesh



Style 1200: Blue Sieve Cleaner with Studs with Solid Stainless Steel Slider Knob



Style 1201: Blue Sieve Cleaner with Studs with Plastic Slider Knob



Style 150: Double Cleaner with Black Nylon Bristles for Wire Mesh



Style 151: Double Cleaner with Natural Hair for Synthetic Mesh



Style 152: Double Cleaner with White Nylon Bristles for Synthetic Mesh



Style 250: Double Cleaner with Studs for Wire & Synthetic Mesh



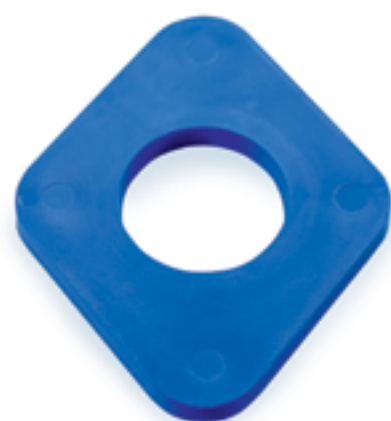
Style 1153: Blue Double Cleaner with Blue Nylon Bristles for Wire Mesh



Style 1250: Blue Double Cleaner with Studs for Wire & Synthetic Mesh



Style 301: Pan Cleaner with Recess



Style 1301: Blue Pan Cleaner with Recess

Sieve Cleaners



**Cotton Cleaner
Green Stripe**

First quality cotton cleaner made from densely woven material to create a hard surface. Strong quality threads increase the endurance of the material and life of the cleaner.



Cotton Cleaner Blue Stripe
Second quality cotton cleaner having a softer surface as for 15% less threads in weft.



**Triangular Type Sieve Cleaner with
Brushes & Solid Metal Slider Knob**
Designed for cleaning all types of synthetic mesh material with gentle brushes. Cleans back-wire with action of metal slider knob. Available with nylon bristles or natural hair.



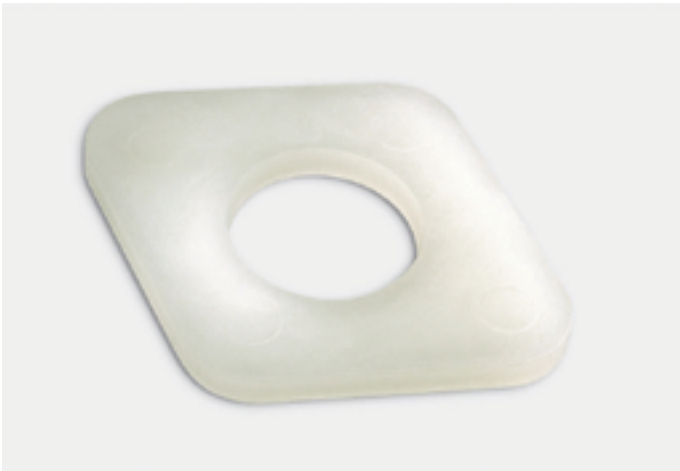
**Triangular Type Sieve Cleaner
with or without Plastic Studs
and Metal Slider Knob**
Designed for all meshes 200 µm & up. Cleans back-wire with action of metal slider knob.



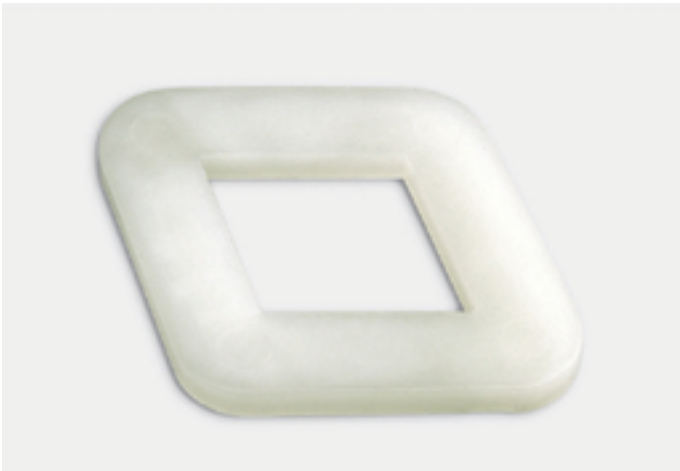
**Light Plastic Sieve Cleaner with
Metal Slider Knob in Desmopan**
Designed for cleaning all types of meshes. Cleans back-wire with action of metal slider knob.



Triangular Pan Cleaner in Desmopan
High elasticity polyurethane provides effective cleaning without damaging sieve frames.



Diamond Plastic Pan Cleaner Round or Diamond Center
High elasticity polyurethane provides effective cleaning without damaging sieve frames.



Sieve Cleaners



Rectangular Sieve Cleaner

Rectangular in shape, used to keep sifting material clean with the movement and action of the sifter. This cleaner used in sieve trays with back wire.



Sieve Balls

Sieve balls used to keep mesh material clean. Available in a variety of sizes: 16, 25, 30 and 35 mm diameter. Materials: polyurethane, rubber and silicone



Bühler Nova Plastic Sieve Cleaners with Knobs or Brushes

Three prong cleaner with a center bottom support and leg extending from one of the prongs. This leg gives a "teeter-totter" effect to keep the sieve cloth cleaner and free of product build-up. Made from flexible polyurethane materials with knobs as used on heavy synthetic and wire cloth materials. Designed for use in Bühler Nova Sieves.



Brushes for Purifiers

85 mm. Space between guides, tuft mounting frame in plastic, oscillating central body in nylon. Available in Synthetic, Animal & Horsehair. Dimensions available are 390-440-350-455-460.

Accessories



Pneumatic Stapler

Pneumatic stapler for staple on sieves for use with industrial strength staples.



Stretching Pliers

Stretching pliers used the pull stretch sifter clothing in order to staple edge to perimeter of sieve tray.



Rubber Mallet

Rubber mallet made with heavy duty plastic handle. Available in black or white color.

Accessories



Spatula
Spatula (flour slick) with a broad, flat, blunt blade used for spreading flour to examine the particle size.



Scraping Knife
Scraping knife used to remove excess glue from surface of sieve.



Plush
Thick plush for inner isolation of plansifters. Available in widths of 140 cm.



Protective Tapes
1.8 mm thick polyester felt tape. Available in 10, 15 and 20 mm width.

Accessories



Brush for Break Rolls
In whole goose feather. Available in lengths of 1.0 and 1.25 mm.



Microscope
Microscope for measurement viewing of mesh materials up to 40x.



10x Mesh Counter
Small foldable mesh counter in both inches and mm measurements.

Interactive Index

0-9

- 10x Loop [047](#)
- 10x Magnifier [047](#)
- 10x Mesh Counter [047](#)

A

- Adhesives [037](#)

B

- Bolting Cloth Grade Stainless
- Steel Mesh [025](#)
- Break Roll Brush [047](#)
- Brushes for Purifiers [044](#)
- Brush for Break Rolls [047](#)
- Bühler Nova Plastic Sieve
- Cleaners [044](#)

C

- centrifugal sifters [018, 027](#)
- Centrifugal Sifting Screens [027](#)
- Class 10,000 Clean Room [003](#)
- Clean Rooms [003](#)
- Compliance of Composition [007](#)
- Compliance of Performance [007](#)
- Connector Sleeves [028](#)
- Cotton Cleaner [042](#)

D

- Dust Filter Bags [026](#)

F

- Fabricated Components [026](#)
- FDA Code [007](#)
- Filip Sieve Cleaners [038, 040](#)
- Frame Adhesives [037](#)
- Frame Spacer [034](#)

G

- Grit Gauze [008, 010](#)

I

- ISO 10993 [003](#)
- ISO Class 7 Clean Room [003](#)

M

- Market Grade Stainless
- Steel Mesh [025](#)
- MAR Mesh [022](#)
- Materials [003](#)
- MDF Support [035](#)
- Microscope [047](#)
- Mill Grade Stainless Steel Mesh [025](#)
- Moisture Absorption
- Resistant Mesh [022](#)
- Monofilament [007](#)

P

- PA GG Mesh [011](#)
- PA HS Mesh [018](#)
- PA HT Mesh [015](#)
- Pan Cleaner [041, 043](#)
- PA XX Mesh [017](#)
- PA XXX Mesh [013](#)
- PES GG Mesh [020](#)
- Plastic Sieve Cleaner [043](#)
- Plush [046](#)
- Pneumatic Stapler [045](#)
- Poly Squeegee (Scrapers) [037](#)
- Pore Size [003](#)
- Protective Tape [046](#)
- Purifier Brushes [044](#)
- Purifier Covers [026](#)

R

- Rubber Mallet [045](#)

S

- SAATImil Adhesives [037](#)
- SAATImil Fabrics [007](#)
- SAATImil GG Grit Gauze [008](#)
- SAATImil HS [009](#)
- SAATImil HT [008](#)
- SAATImil MAR [022](#)
- SAATImil PA GG [011](#)
- SAATImil PA HS [018](#)
- SAATImil PA HT [015](#)
- SAATImil PA XX [017](#)
- SAATImil PA XXX [013](#)
- SAATImil PES GG [020](#)
- SAATImil STS [024](#)
- SAATImil Tension Meter [036](#)
- SAATImil Weave Types [008](#)
- SAATImil XX [009](#)
- SAATImil XXX [008](#)
- SAATI Tendimesh [030, 032](#)
- Scrapers [037](#)
- Scraping Knife [046](#)
- Sieve Cleaner [040, 042, 044](#)
- Sieve Cleaners [042, 044](#)
- Sieve Cleaning Brush [038](#)
- Spatula [046](#)
- Stainless Steel Woven Mesh [024](#)
- Stretching Clamps [030, 032](#)
- Stretching Pliers [045](#)

T

- Tape [046](#)
- Tensioning Support [034](#)
- Tension Meter [036](#)
- turbo-sifter covers [018](#)

U

- Ultrafix CA Activator [037](#)
- Ultrafix CA Series Adhesives [037](#)
- Ultrafix Remover [037](#)
- UNI ISO 9001 [003](#)
- USP CLASS VI [003](#)

SAATI S.p.A. -**World Headquarters**

Via Milano 14
22070 Appiano Gentile Italy
Phone: +39 031 9711
info.IT@saati.com

SAATI France S.A.S

74 Route de Bapaume - Sailly-Saillisel
80360 - France
Phone: +33 3 22 85 77 00
saatifrance@saati.com

SAATI Serigrafia Iberica S.A.U.

P.I. "El Mijares" c/Industria 13 - 12550
Almazora (Castellon) - Spain
Phone: +34 964550688
info.ES@saati.com

SAATI Americas Corp.

201 Fairview Street Ext.- Fountain Inn
- South Carolina 29644 - USA
Phone: +1 (864) 601-8300
info.US@saati.com

SAATI Technical Fabric (Tianjin) CO. Ltd

Cross of Saida 2nd Branch Road, Saida Century
Avenue, Xiqing Ec.Dev. Area - Tianjin - China
Phone: +86 22 23960843
info.CN@saati.com

OOO SAATI Russia

Shvetsova Street, 23 house, 198095,
St. Petersburg, Russia
Phone: +79 062788343
info.RU@saati.com

SAATI Korea Ltd

SK Ventium 101-601 - Dangeong-dong, Gosan-ro
166, Gunpo-si, Gyeonggi-do, South Korea, Zip 15850
Phone: + 82 31 429 9337
info.KR@saati.com

SAATI**Deutschland GmbH**

Ostring 22 - D-46348 Raesfeld - Germany
Phone: +49 2865 95800
info.DE@saati.com

SPT - Sales + Marketing GmbH

Kurpfalzring 100a - 69123 Heidelberg - Germany
Phone: +49 62 21 | 77 876-27 **info.DE@saati.com**

CST Colour Scanner Technology GmbH

Koenigsberger Str. 117 - 47809 Krefeld - Germany
Phone: +49-2151-1592260
office@c-s-t.de

SAATI Advanced Chemicals LLC

201 Fairview Street Ext.- Fountain Inn
- South Carolina 29644 - USA
Phone: +1 (218) 628-2217
info@ikonics.com

WuXi TianYi Precision Fabrics Co., Ltd.

No. 28, Xigang West Road, Donghutang,
Donggang Town, Xishan District, Wuxi City - China
Phone: +86 510-88791064
info.CN@saati.com

SAATI is Social**Contact SAATI**